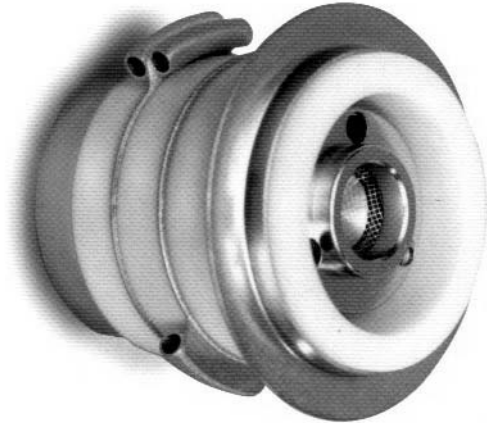


## Model HWEG-101228 Electron Gun Specifications

### Model HWEG-101228M: M Type

Intercepting Gridded Pierce Gun

Description	Nominal Value*
Cathode Voltage	20kV
Grid Cutoff	-300 Volts (approx)
Grid Drive	+235 Volts for 5.7 A @ 20kV
Grid Current	6% of Beam Amps
Grid Power Dissipation	3.0 Watts max.
Heater Voltage	6.3 Volts (nom)
Heater Current	5.6 Amps (nom)
Perveance	2.0 micropervs
Pulse Width	100 microseconds max.
Duty Cycle	0.04 max.
Beam Current	5.7 Amps



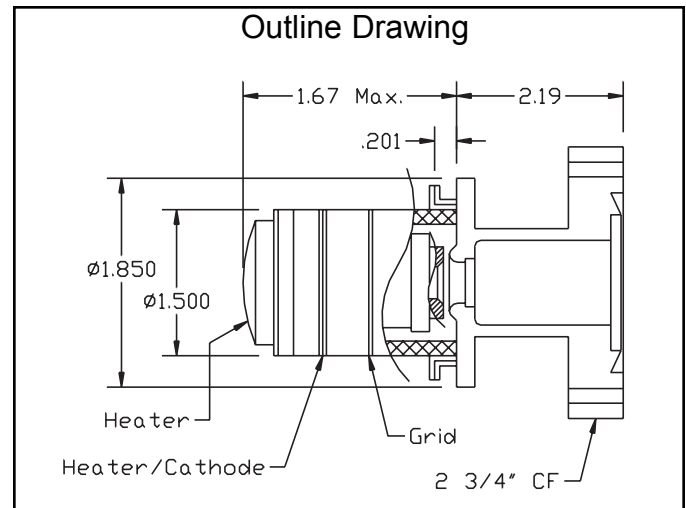
Vg/Vk approximate constant with constant perveance.  
 \*Values with optional anode and 0.336 perveance set gap.



Optional 2 3/4" Conflat Flange Mount

### Mechanical Specifications

Cathode Diameter 0.602 inches  
 Half Angle 34 degrees  
 Beam Minimum Diameter 0.25" @ 0.86" from cathode center @ 2.0 micropervs



Shown with optional Anode and Conflat Flange.

Distance from cathode center (inches)  
 Approximate beam diameter (inches)

0.86	1.00	1.50	2.00	2.50	3.00
0.25	0.46	0.68	0.95	1.26	2.59

### Cathode Specifications

Cathode Type Dispenser  
 Coating M Type  
 Mix 311 BaO, CaO, Al<sub>2</sub>O<sub>3</sub>  
 Peak Emission Density 10 A/cm<sup>2</sup> maximum

Rev. Date 9/9/02