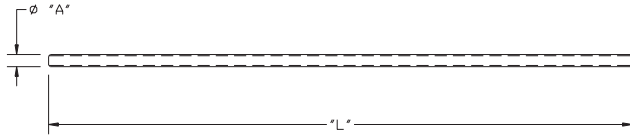
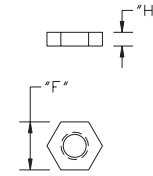


TB-187
Mo, W and Ta Threaded Hardware

Threaded Rod Stock



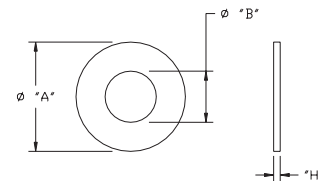
Hex Nuts



Sizes		Wire Wound	Material			Stocked "L"	Major Dia. "A"
Inches	Metric		Mo	Ta	W		
0-80			x	x	-	12	0.060
		3/16	-	-	x	12	0.062
	1.6 x .35		x	x	-	12	0.063
1-72			x	x	-	12	0.073
	2 x .4		x	x	-	12	0.079
2-56			x	x	-	12	0.086
4-40			x	x	-	12	0.112
	3 x .5		x	x	-	24	0.118
5-40			x	x	-	24	0.125
		1/8	-	-	x	12	0.125
6-32			x	x	-	24	0.138
	4 x .7		x	x	-	24	0.157
8-32			x	x	-	24	0.164
10-24			x	-	-	24	0.190
10-32			x	x	-	36 / 24	0.190
	5 x .8		x	x	-	24	0.197
12-28			-	x	-	24	0.216
	6 x .1		x	x	-	24	0.236
		1/4	-	-	x	12	0.250
1/4-20			-	x	-	36	0.250
1/4-28			x	x	-	24	0.250
5/16-18			x	-	-	36	0.312
5/16-24			x	x	-	24	0.312
	8 x 1.25		x	x	-	24	0.315
		3/8	-	-	x	12	0.375
3/8-16			x	x	-	36	0.375
3/8-24			x	x	-	24	0.375
	10 x 1.5		x	x	-	24	0.394
1/2-13			x	x	-	36	0.500
1/2-20			x	x	-	24	0.500
5/8-11			x	x	-	36	0.625
3/4-10			x	-	-	36	0.750

Sizes		Material		Dimensions	
Inches	Metric	Mo	Ta	"F"	"H"
-	1 x .25	x	x	1/8	.04
0-80	-	x	x	5/32	.04
	1.6 x .35	x	x	1/8	.04
1-72	-	x	x	5/32	.05
	2 x .4	x	x	5/32	.05
2-56	-	x	x	3/16	.05
4-40	-	x	x	1/4	.06
	3 x .5	x	x	7/32	.06
5-40	-	x	x	5/16	.06
6-32	-	x	x	5/16	.09
	4 x .7	x	x	9/32	.09
8-32	-	x	x	11/32	.10
10-24	-	x	-	11/32	.12
10-32	-	x	-	11/32	.12
10-32	-	-	x	3/8	.14
	5 x .8	-	x	5/16	.12
12-28	-	-	x	3/8	.14
	6 x 1.0	x	x	3/8	.12
1/4-20	-	x	-	7/16	.22
1/4-20	-	-	x	1/2	.19
1/4-28	-	x	-	7/16	.22
1/4-28	-	-	x	1/2	.19
5/16-18	-	x	-	9/16	.26
5/16-18	-	-	x	5/8	.21
5/16-24	-	x	-	9/16	.26
5/16-24	-	-	x	5/8	.21
3/8-16	-	x	-	5/8	.33
3/8-16	-	-	x	5/8	.19
3/8-24	-	x	-	5/8	.33
3/8-24	-	-	x	5/8	.21

Washers



Screw Size		Nominal Size		"H" in Thousandths Of An Inch										
Inches	Metric	"A"	"B"	Molybdenum					Tantalum			Tungsten		
				.005	.010	.015	.020	.030	.010	.015	.020	.030	.005	.010
#0		3/16	.067	x	x	x	-	-	x	x	-	-	x	x
	2	13/64	.093	x	x	x	-	-	x	x	-	-	x	x
#2		1/4	.093	x	x	x	-	-	x	x	-	-	x	x
#4		5/16	.125	x	x	x	x	x	x	x	-	-	x	x
	3	9/32	.125	x	x	x	x	x	x	x	-	-	x	x
#6		3/8	.148	x	x	x	x	x	x	x	-	-	x	x
	4	23/64	.172	x	x	x	x	x	x	x	-	-	x	x
#8		7/16	.174	x	x	x	x	x	x	x	-	-	x	x
#10		1/2	.203	x	x	x	x	x	x	x	-	-	x	x
#12		1/2	.234	x	x	x	x	x	x	x	-	-	x	x
	6	1/2	.250	x	x	x	x	x	x	x	-	-	x	x
1/4		5/8	.265	x	x	x	x	x	x	x	-	-	x	x
5/16		3/4	.300	x	x	x	x	x	x	x	-	-	x	x
3/8		7/8	.406	x	x	x	x	x	x	x	-	-	x	x
1/2		1-1/8	.531	x	x	x	x	x	x	x	-	-	x	x