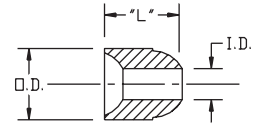


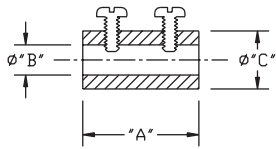


#101471 Fish Spine Beads

- 95% Alumina
- 450°C rating



Part #	"L"	OD	ID	Wire Size	Beads/Foot
101471-01	0.110	0.100	0.053	0.045	125
101471-02	0.170	0.156	0.068	0.050	85
101471-03	0.185	0.183	0.087	0.064	73
101471-04	0.260	0.239	0.107	0.102	56
101471-05	0.260	0.240	0.144	0.128	53
101471-06	0.400	0.366	0.146	0.128	38
101471-07	0.125	0.125	0.056	0.048	115
101471-08	0.312	0.330	0.133	0.125	44



#101470 Inline Power Connection

- BeCu construction
- 400°C in vacuum, 150°C in air rating
- 10 pieces per pack



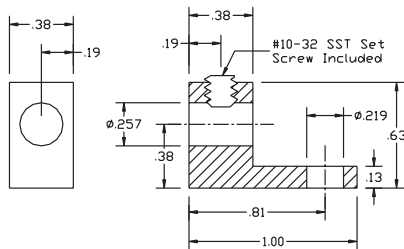
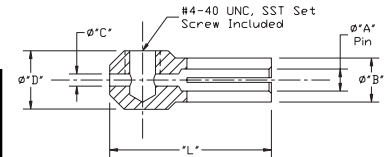
Part #	Dimensions			Maximum Current (A)
	"A"	"B"	"C"	
101470-01	0.50	0.041	0.125	10
101470-02	0.50	0.058	0.188	15
101470-03	0.50	0.072	0.188	20
101470-04	0.56	0.120	0.250	25
101470-05	0.63	0.134	0.250	30
101470-06	1.00	0.260	0.500	100

#101466 Push On Connectors

- BeCu Construction
- 200°C operation in vacuum, 150°C in air



Part #	Dimension				
	"A"	"B"	"C"	"D"	"L"
101466-01	0.050	0.145	0.052	0.25	0.69
101466-02	0.060	0.187	0.052	0.25	0.69
101466-03	0.094	0.187	0.052	0.25	0.69
101466-04	0.250	0.450	0.096	0.50	1.00



#101468 Angle Clamp

- OFE Copper construction
- SST SHC screw included
- Vented screws available



#101467 Inline Clamp

- OFE Copper construction
- SST SHC screw included
- Vented screws available
- Available for 1/8" rod also

