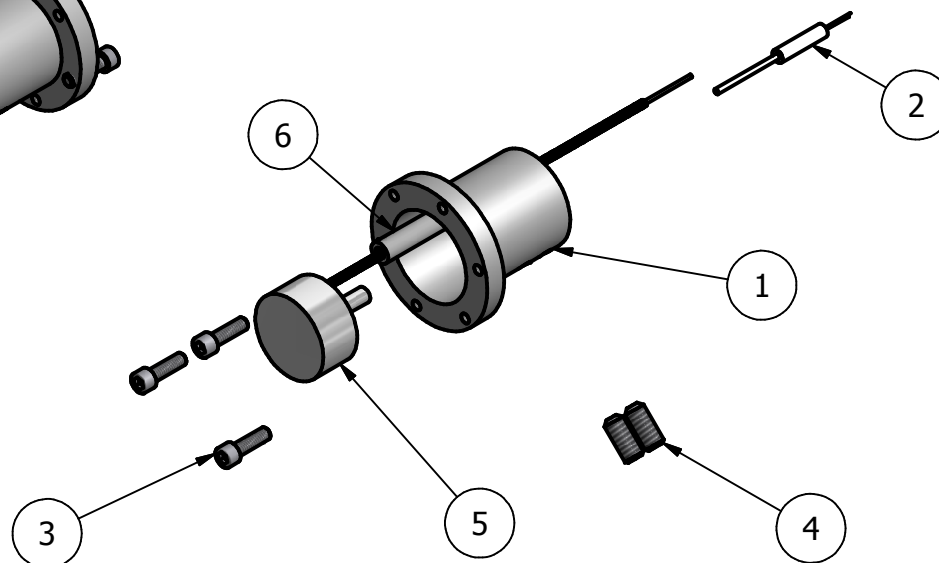
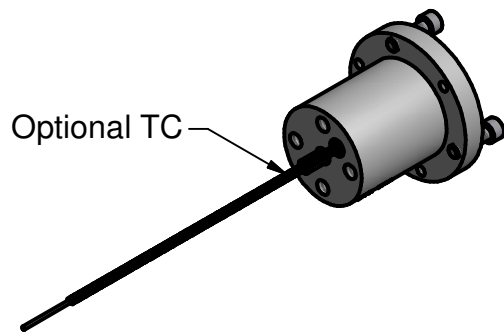
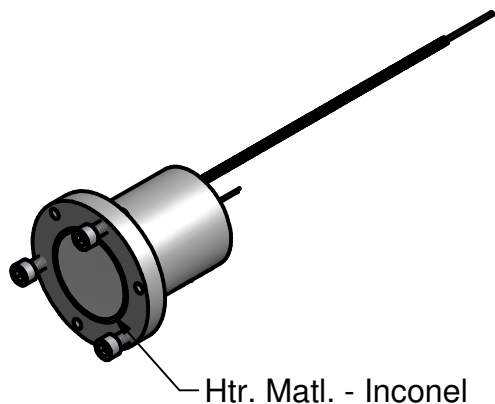


PARTS LIST

ITEM	QTY	PART NUMBER	DESCRIPTION
1	1	101863-02	Outer Housing
2	1	101689-05	Type K TC, Optional
3	3	#1-72 x 1/4	SST, SHCS, Silver Plated
4	4	#4-40 x 1/4	SST, Set Screw, Silver Plated
5	1	104793-02	Heater Assembly
6	1	ASB-125063	Insulator x .46/.48



Notes:

- Estimated Operation:
3.9V, 7.4A @ 800°C
5.9V, 9.9A @ 1000°C
8.1V, 11.6A @ 1200°C
- This assembly has been cleaned and handled for UHV use. Care should be taken not to contaminate the assembly.
- The lead insulator, Item 6, is made from stock Alumina tubing and insulates the lead from the housing. One lead is internally grounded.

This document is the property of HeatWave Labs. Its contents may not be reproduced without express written permission of HeatWave Labs.

DRAWN	B Perryman	4/9/2013
CHECKED		
QA		
MFG		
APPROVED		
Material:		

HeatWave Labs, Inc.
 195 Aviation Way, Suite 100 P: 831-722-9081
 Watsonville, CA 95076 F: 831-722-5491
 www.cathode.com

Ø.50 Heater Assembly w/o Sample Clips

SIZE	Cage Code:	DWG NO	REV
A	1YAN4	108268	
SCALE	1X		SHEET 1 OF 2

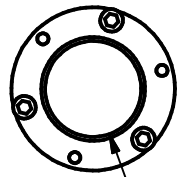
2



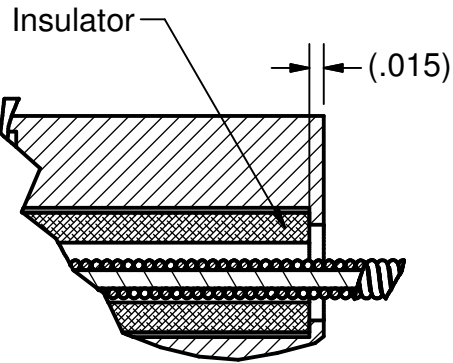
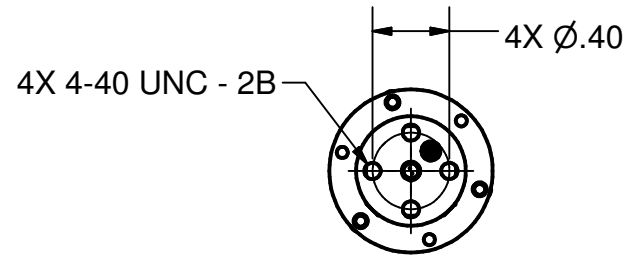
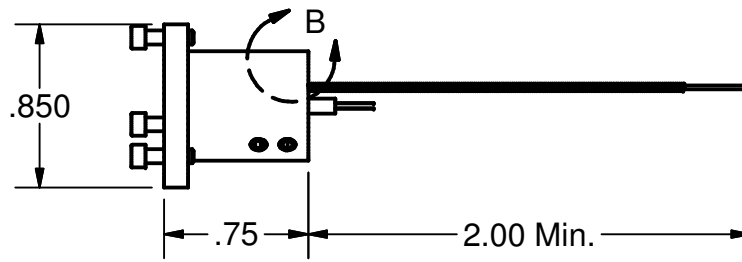
1

B

B



Heater \varnothing .50



DETAIL B
SCALE 5 : 1

A

A

DRAWN BPerryman	4/9/2013
CHECKED	
QA	
MFG	
APPROVED	

<i>HeatWave Labs, Inc.</i>		195 Aviation Way, Suite 100 P: 831-722-9081 Watsonville, CA 95076 F: 831-722-5491 www.cathode.com	
\varnothing .50 Heater Assembly w/o Sample Clips			
SIZE A	DWG NO 108268	REV	
SCALE 1:1	1		SHEET 2 OF 2

2



1