

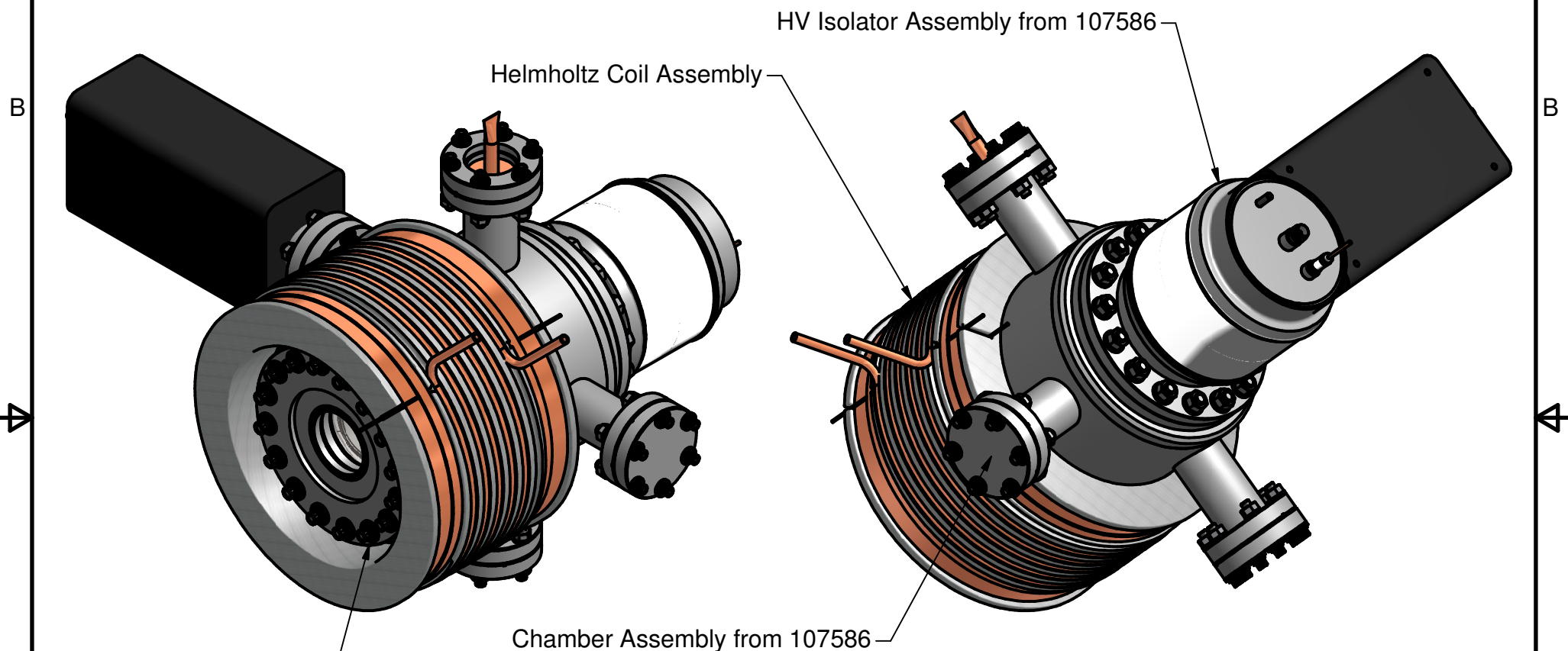


PARTS LIST

ITEM	QTY	PART NUMBER	DESCRIPTION
1	1	107678	Test Cathode/Dielectric Assy, BOM

REVISION HISTORY

REV	DESCRIPTION	DATE	APPROV
1	Added Helmholtz Coil.	8/7/12	MC
A	12.12 was 11.02.	9/11/12	MC



Chamber Assembly from 107586

6 CFF Mounted
Phosphor Screen

Next Assy. 107586

DRAWN mcurtis	4/30/2012
CHECKED	
QA	
MFG	
APPROVED	

Material:

-

HeatWave Labs, Inc.
 195 Aviation Way, Suite 100 P: 831-722-9081
 Watsonville, CA 95076 F: 831-722-5491
www.cathode.com

Test Cathode/Dielectric Assembly

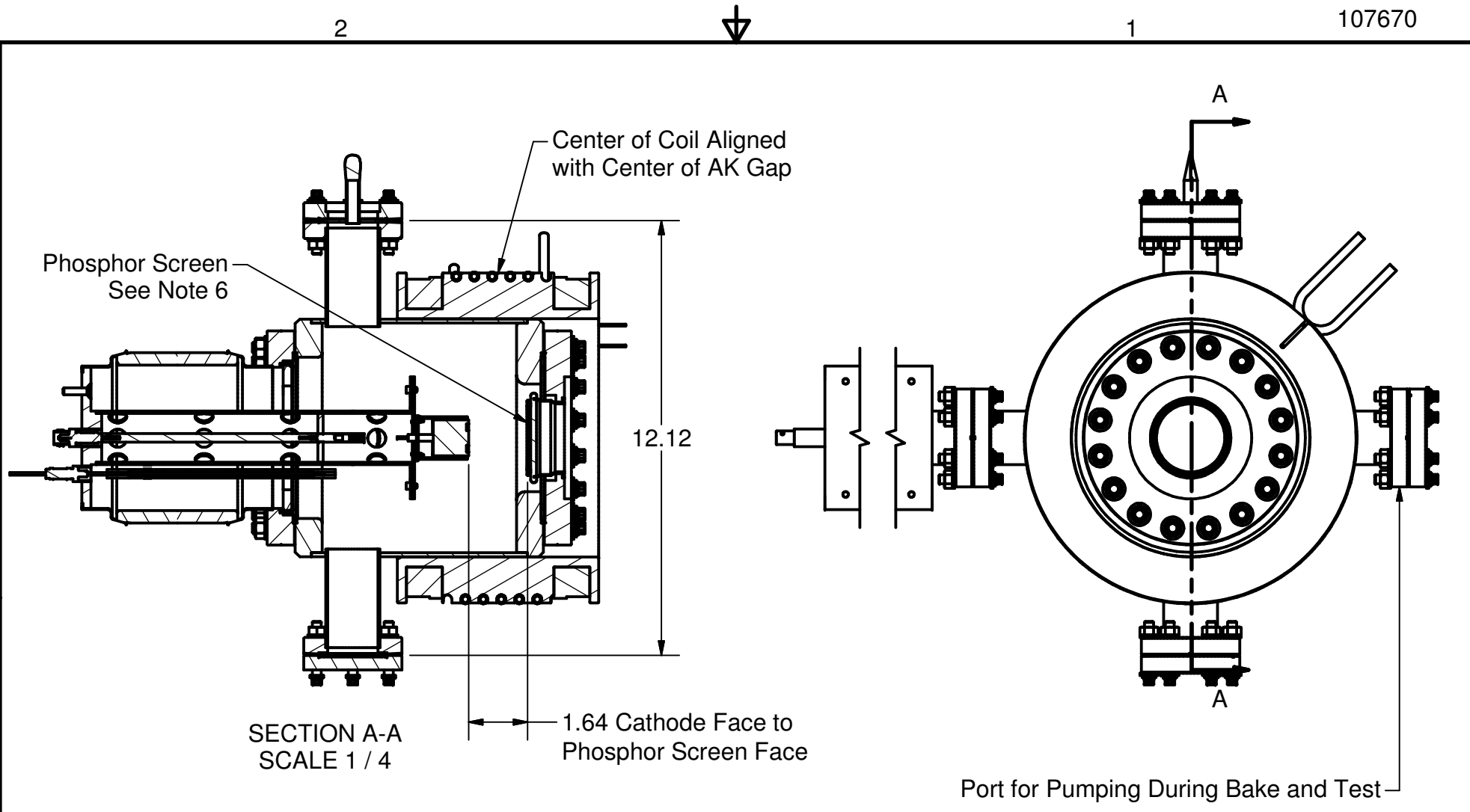
SIZE	Cage Code:	DWG NO	REV
A	1YAN4	107670	A

SCALE 1/4

SHEET 1 OF 3

This document is the property of HeatWave Labs.
 Its contents may not be reproduced without
 express written permission of HeatWave Labs.





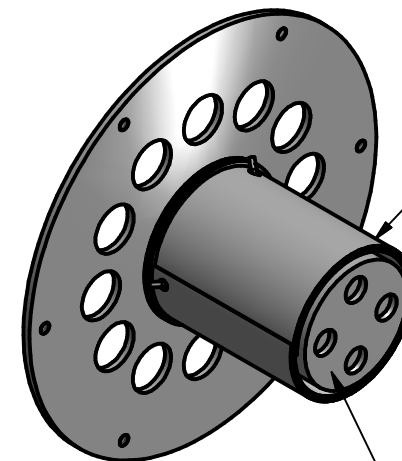
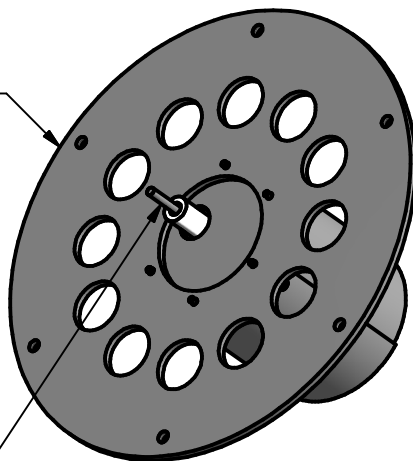
This document is the property of HeatWave Labs.
Its contents may not be reproduced without
express written permission of HeatWave Labs.

DRAWN mcurtis	4/30/2012
CHECKED	
QA	
MFG	
APPROVED	

<i>HeatWave Labs, Inc.</i>		195 Aviation Way, Suite 100 P: 831-722-9081 Watsonville, CA 95076 F: 831-722-5491 www.cathode.com	
		Test Cathode/Dielectric Assembly	
SIZE A	DWG NO 107670		REV A
SCALE 1/4	SHEET 2 OF 3		



SST Mounting Base

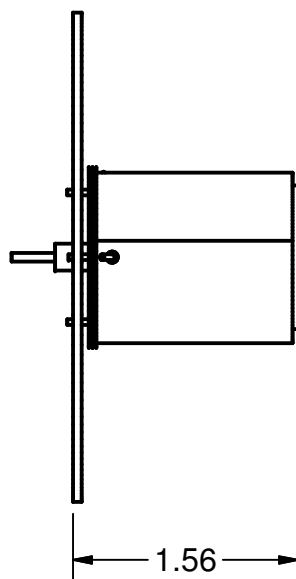
Heater Lead, other Lead
Internally GroundedMo Radial and
Rear Heat Shield

Ø1.0 Cathode w/Legs

These Views Show Test Cathode Assembly Only

Notes:

1. All parts must be clean for UHV use prior to assembly per MP-264.
2. Assembly must be handled with good clean room practice per MP-220.
3. After assembly is complete, storage should be per MP-274.
4. The assembly must be leak tight to 1×10^{-9} cc/sec Helium.
5. Care must be taken not to tilt the assembly. The axis must be kept vertical with the cathode face pointing upward. If tilted the BN inserts in the cathode face will fall out of their counterbores and the set up must be taken apart to reposition the inserts.
6. The Phosphor screen has a working diameter of Ø1.75. Care must be taken not to bump or vibrate the assembly as this will cause the Phosphor to dislodge and fall from the glass surface.



1.56

This document is the property of HeatWave Labs.
Its contents may not be reproduced without
express written permission of HeatWave Labs.

DRAWN mcurtis	4/30/2012
CHECKED	
QA	
MFG	
APPROVED	

HeatWave Labs, Inc.
 195 Aviation Way, Suite 100 P: 831-722-9081
 Watsonville, CA 95076 F: 831-722-5491
www.cathode.com

Test Cathode/Dielectric Assembly

SIZE A	DWG NO 107670	REV A
SCALE 3/4	SHEET 3 OF 3	

