

2



1

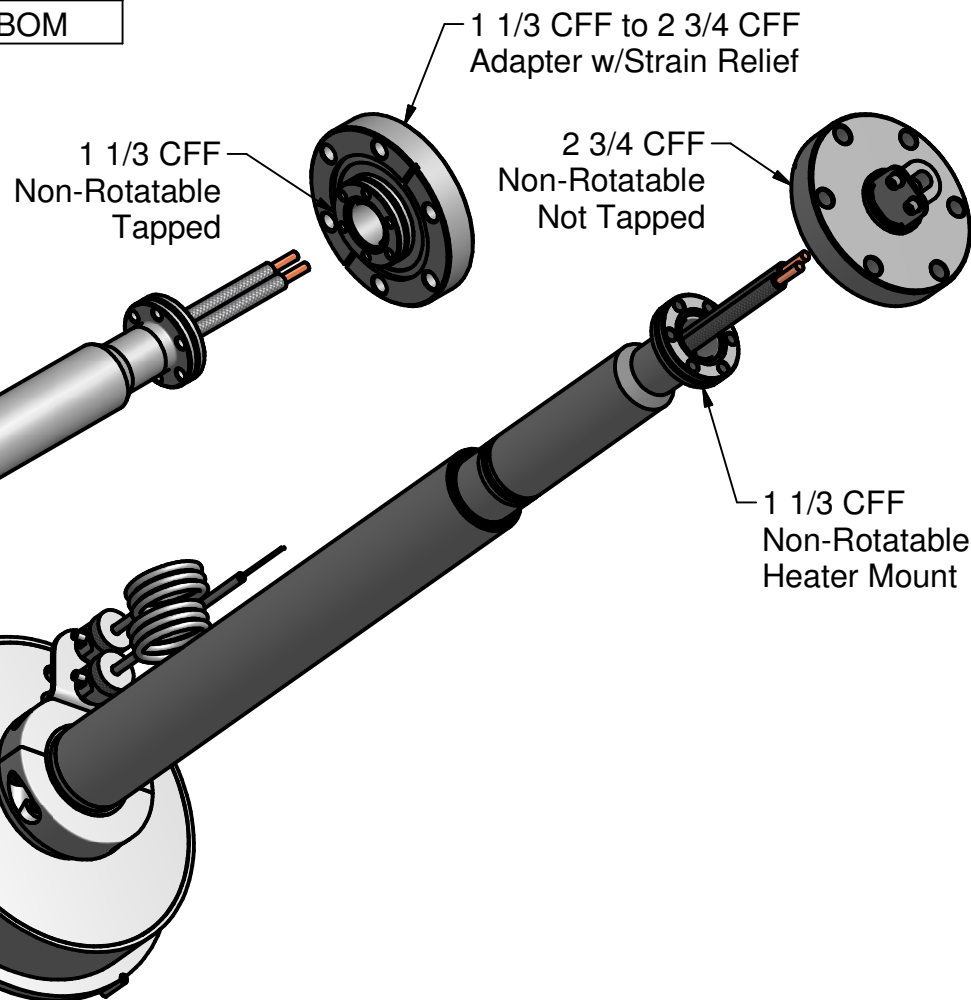
107483

## PARTS LIST

ITEM	QTY	PART NUMBER	DESCRIPTION
1	1	107491	Ø4.0 O2 Heater Assembly, BOM

## Notes:

- The thermocouples are Ø1/8 Inconel sheath x 24 long, 6 long flying leads, epoxy sealed transition. It will be shipped uncoiled for customer bending as required.
- The filament is sealed from chamber atmosphere and when sealed by the 1 1/3 CFF it will complete the vacuum envelop of the chamber.
- Once installation into the chamber is complete the power leads must be strain relieved to prevent damage to the leads.
- Estimated operation:  
11.1V, 26.4A @ 800°C  
16.9V, 33.1A @ 1000°C



DRAWN mcurtis	1/25/2012
CHECKED	
QA	
MFG	
APPROVED	
Material:	
-	

*HeatWave Labs, Inc.* 195 Aviation Way, Suite 100 P: 831-722-9081  
Watsonville, CA 95076 F: 831-722-5491  
www.cathode.com

Ø4.0 O2 Heater Assembly,  
Sealed, 1 1/3 CFF Mount

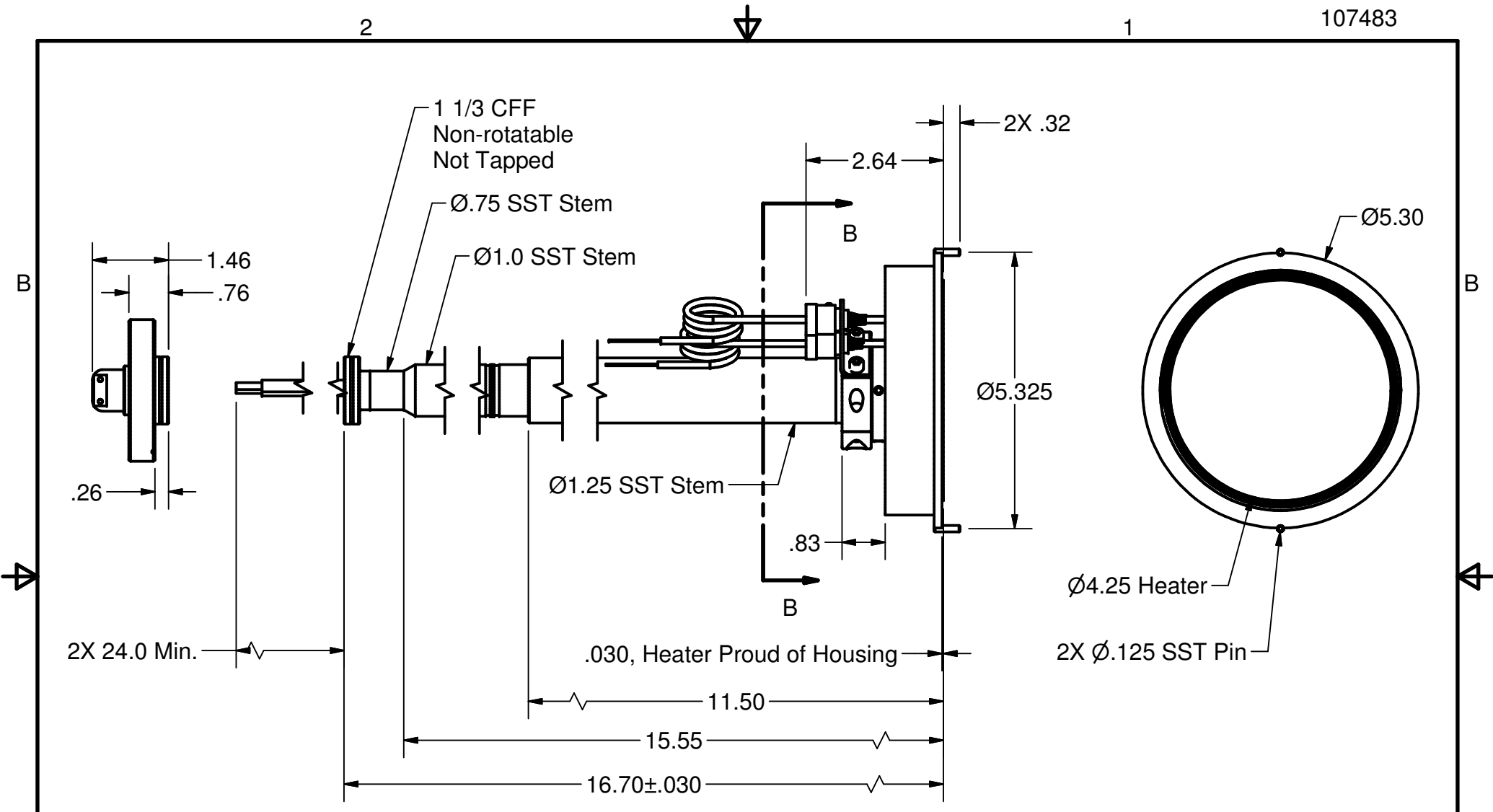
This document is the property of HeatWave Labs.  
Its contents may not be reproduced without  
express written permission of HeatWave Labs.

SIZE A	Cage Code: 1YAN4	DWG NO 107483	REV
SCALE 3/8	SHEET 1 OF 3		

2



1



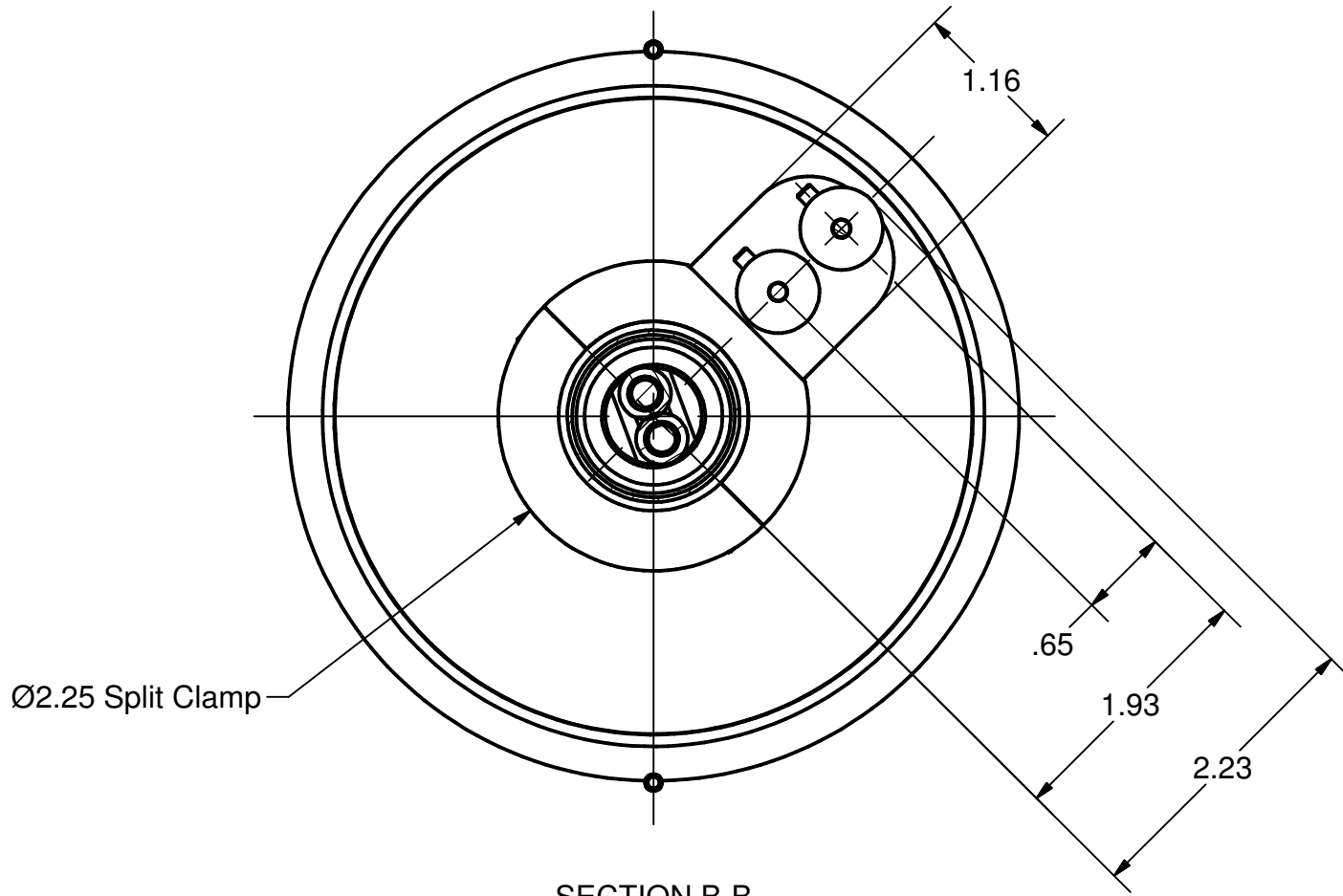
This document is the property of HeatWave Labs. Its contents may not be reproduced without express written permission of HeatWave Labs.

DRAWN mcurtis	1/25/2012
CHECKED	
QA	
MFG	
APPROVED	

**HeatWave Labs, Inc.** 195 Aviation Way, Suite 100 P: 831-722-9081  
 Watsonville, CA 95076 F: 831-722-5491  
 www.cathode.com

**Ø4.0 O2 Heater Assembly,  
 Sealed, 1 1/3 CFF Mount**

SIZE A	DWG NO 107483	REV
SCALE 3/8	SHEET 2 OF 3	



SECTION B-B  
SCALE 3/4

Ø2.25 Split Clamp

DRAWN mcurtis	1/25/2012
CHECKED	
QA	
MFG	
APPROVED	

*HeatWave Labs, Inc.* 195 Aviation Way, Suite 100 P: 831-722-9081  
Watsonville, CA 95076 F: 831-722-5491  
www.cathode.com

**Ø4.0 O2 Heater Assembly,  
Sealed, 1 1/3 CFF Mount**

This document is the property of HeatWave Labs.  
Its contents may not be reproduced without  
express written permission of HeatWave Labs.

SIZE A	DWG NO 107483	REV
SCALE	SHEET 3 OF 3	