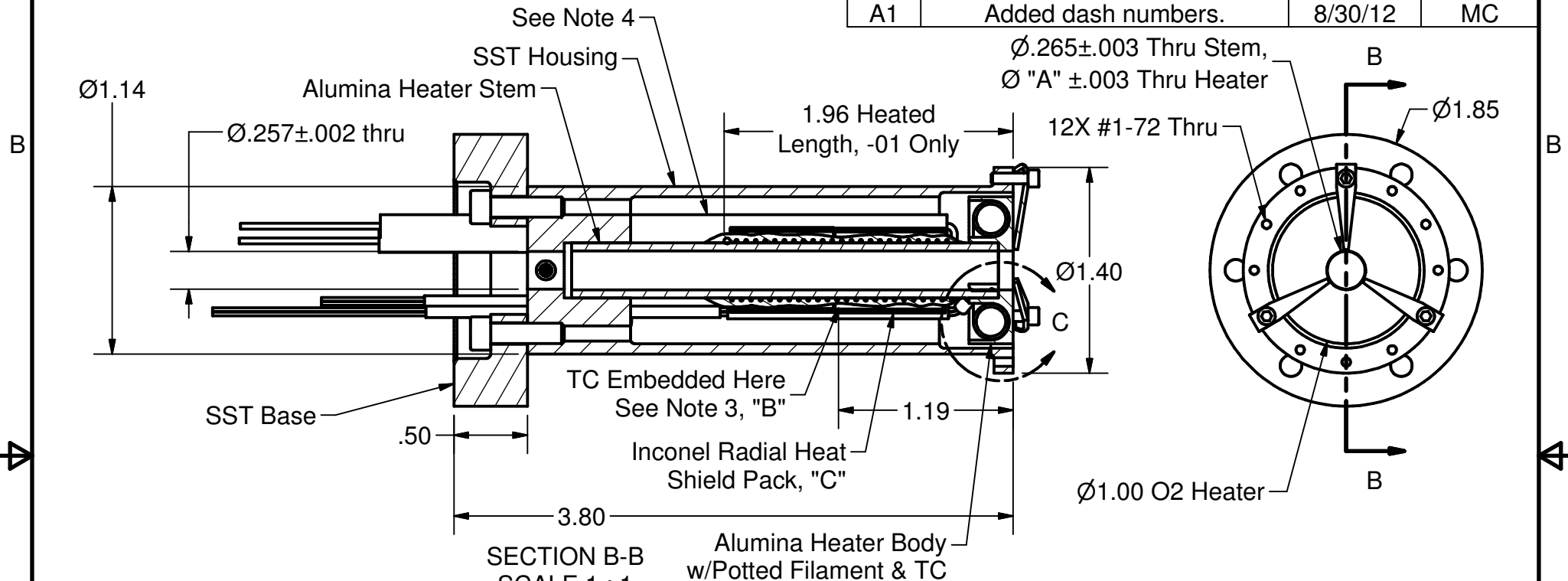


PARTS LIST

REVISION HISTORY

ITEM	QTY	PART NUMBER	DESCRIPTION
1	1	See Table A	Ø1.0 O2 Heater Assembly, BOM

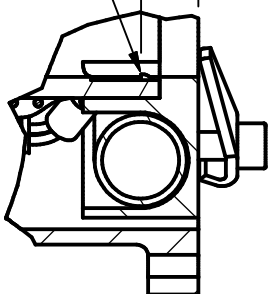
REV	DESCRIPTION	DATE	APPROV
A	Changed TC locations and heat shield pack.	4/3/2012	MC
A1	Added dash numbers.	8/30/12	MC



SECTION B-B
SCALE 1 : 1

Alumina Heater Body
w/Potted Filament & TC

Heater TC
Embedded Here
See Note 2



DETAIL C
SCALE 2 : 1

Dash	"A"	"B"	"C"	"D"	Referance	Condition
-01	.265	Yes	Yes	2 Pair	107065-01	Stem Heater
-02	.000	No	No	1 Pair	107065-02	No Stem Heater

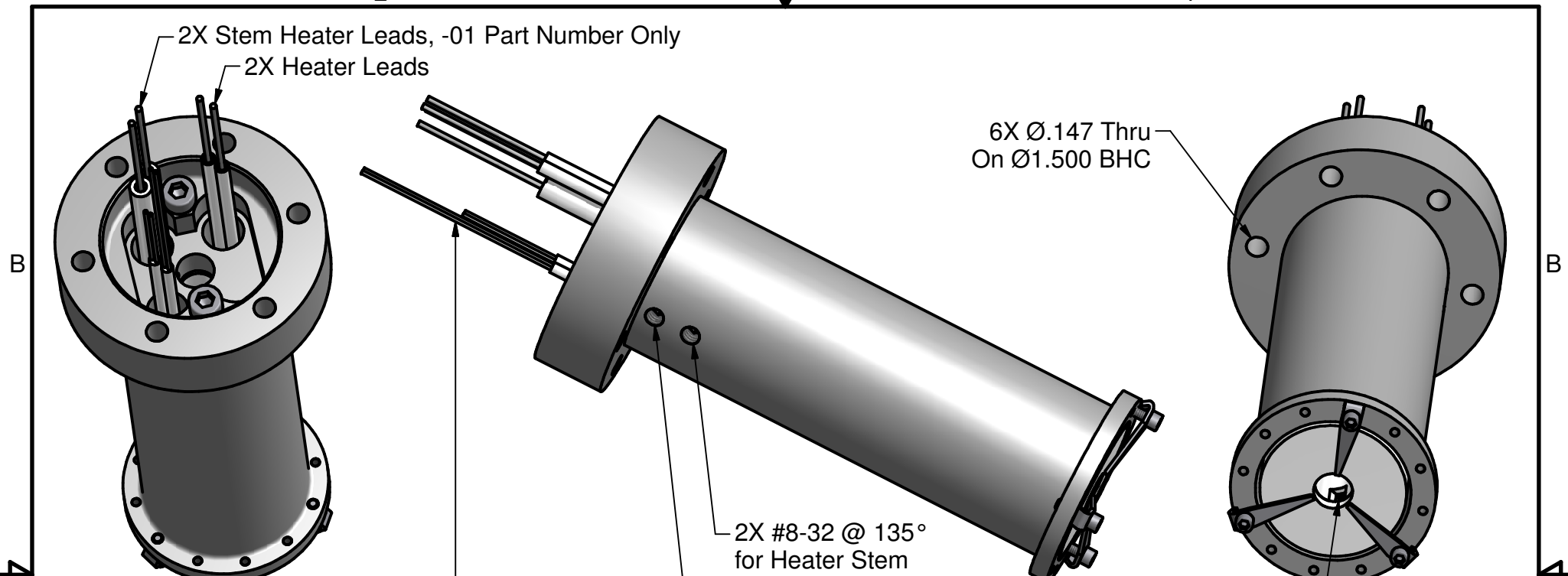
DRAWN mcurtis	8/17/2011
CHECKED	
QA	
MFG	
APPROVED	
Material:	

HeatWave Labs, Inc.
 195 Aviation Way, Suite 100 P: 831-722-9081
 Watsonville, CA 95076 F: 831-722-5491
 www.cathode.com

Ø1.0 O2 Heater Assembly
w/Heated Stem & Housing

SIZE A	Cage Code: 1YAN4	DWG NO 106961	REV A1
SCALE 1X	SHEET 1 OF 2		

This document is the property of HeatWave Labs.
Its contents may not be reproduced without
express written permission of HeatWave Labs.



Notes:

- Estimated operation:
 Heater:
 17.6V, 8.0A @ 800°C
 22.5V, 9.1A @ 1000°C
 27.9V, 10.5A @ 1200°C
 Stem:
 16.9V, 8.0A @ 800°C
 21.6V, 9.1A @ 1000°C
 26.8V, 10.5A @ 1200°C

- A small window is visible in the tube ID where the heater TC is located. The TC junction will be located midway between the stem OD and the heater counterbore. Alumina glue covers the TC and no glue or TC will protrude into the Ø.265 tube bore.
- The TC is buried in the potting against the tube OD. The filament will be parted to make room for the junction.
- All Insulators must be tied to the heat shield pack with Gunther straps.

This document is the property of HeatWave Labs. Its contents may not be reproduced without express written permission of HeatWave Labs.

DRAWN mcurtis	8/17/2011
CHECKED	
QA	
MFG	
APPROVED	

<i>HeatWave Labs, Inc.</i>		195 Aviation Way, Suite 100 P: 831-722-9081 Watsonville, CA 95076 F: 831-722-5491 www.cathode.com	
Ø1.0 O2 Heater Assembly w/Heated Stem & Housing			
SIZE A	DWG NO 106961	REV A1	
SCALE 1x	SHEET 2 OF 2		