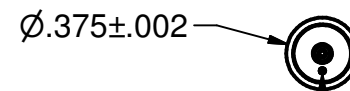
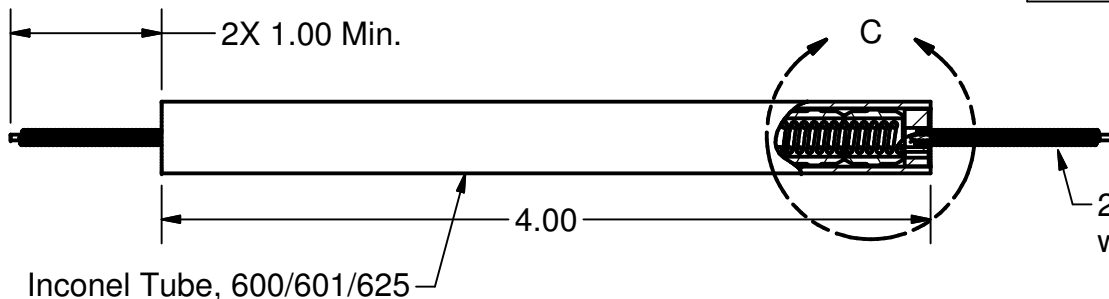


PARTS LIST

ITEM	QTY	PART NUMBER	DESCRIPTION
1	1	See Table A	Ø.375 UHV/O2 Heater Assy, BOM

REVISION HISTORY

REV	DESCRIPTION	DATE	APPROV
1	Added dash numbers.	12/13/11	MC
2	Changed Moly wire to Ø.030.	12/20/11	MC
3	Added -03 & -04.	10/23/12	MC
4	Increased # of insulators in -03.	11/9/12	MC



2X Ø.03 Vent Hole, 1X Each End

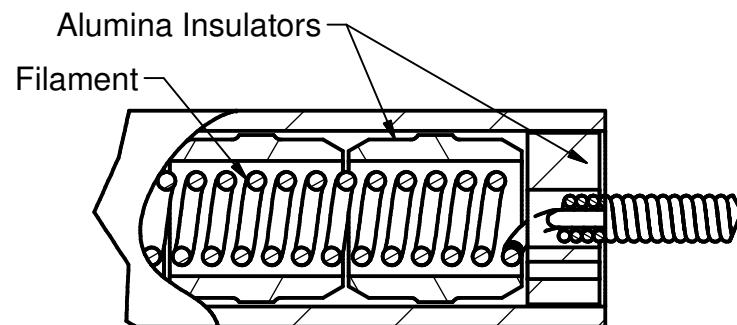
2X Heater Lead w/Cooling Coil

Inconel Tube, 600/601/625

-01 & -02 Shown on this Page

TABLE A

Dash #	Part #	Filament	Atmosphere	Watts/Inch
-01	106953-01	Mo, Ø.030	UHV	-
-02	106953-02	Pt, Ø.030	UHV/O2	-
-03	108040-01	Mo, Ø.030	UHV	60
-04	108040-02	Mo, Ø.030	UHV	30



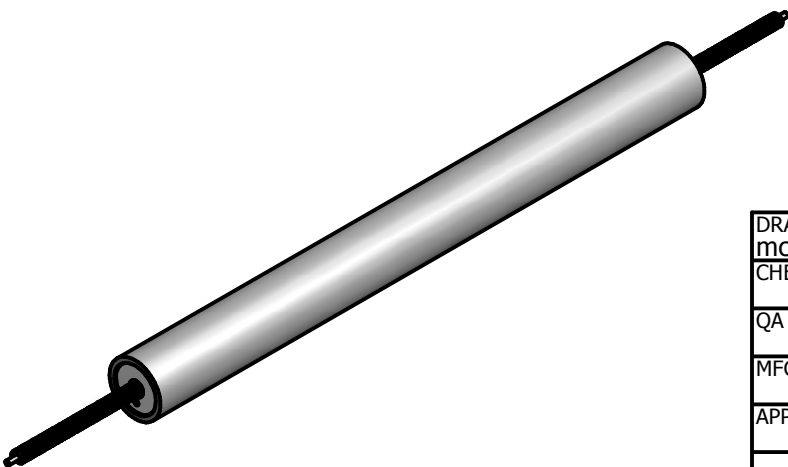
DETAIL C
SCALE 3 : 1

DRAWN mcurtis	6/3/2011
CHECKED	
QA	
MFG	
APPROVED	
Material:	

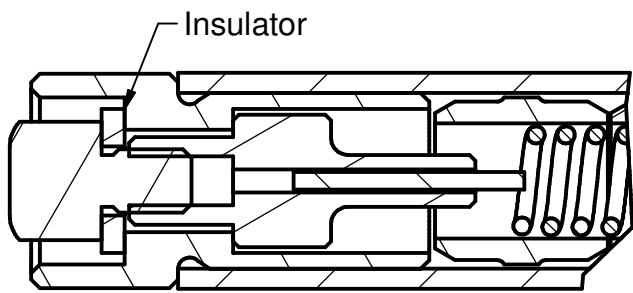
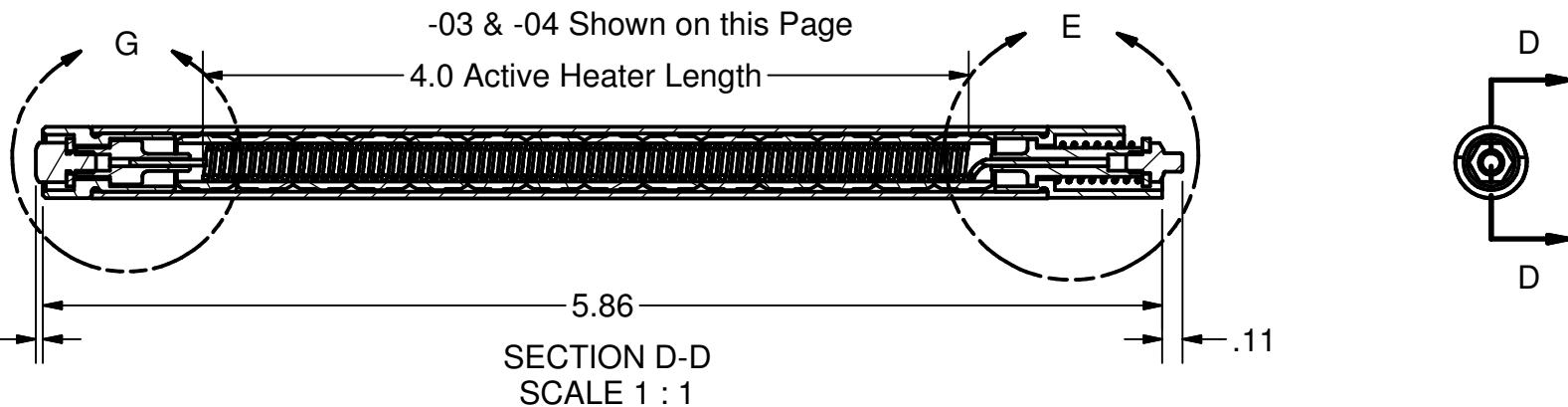
HeatWave Labs, Inc. 195 Aviation Way, Suite 100 P: 831-722-9081
 Watsonville, CA 95076 F: 831-722-5491
 www.cathode.com

Ø.375 x 4.0 UHV/O2 Heater Assembly

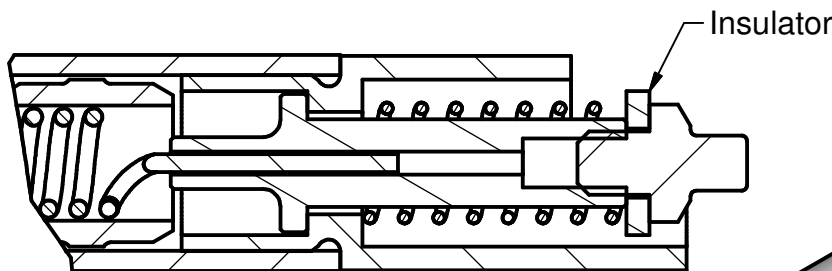
SIZE A	Cage Code: 1YAN4	DWG NO 106881r4	REV 4
SCALE 1X	SHEET 1 OF 2		



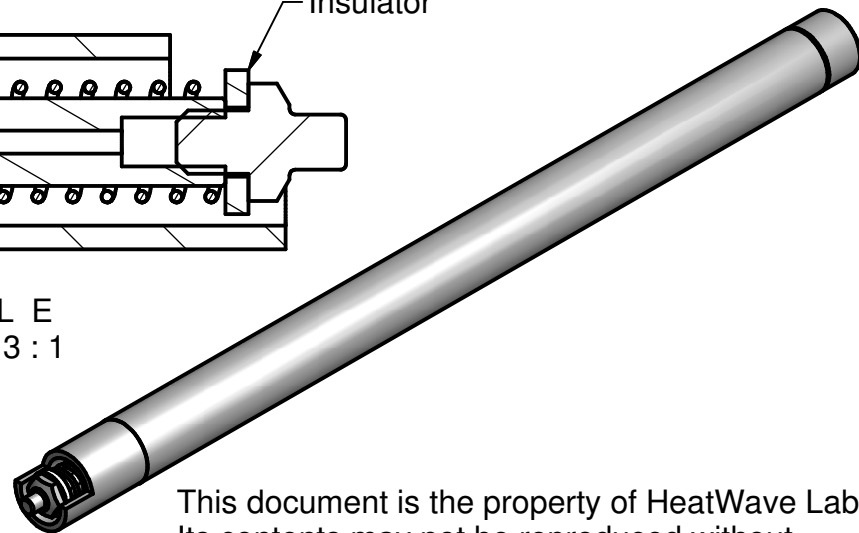
This document is the property of HeatWave Labs. Its contents may not be reproduced without express written permission of HeatWave Labs.



DETAIL G
SCALE 3 : 1



DETAIL E
SCALE 3 : 1



This document is the property of HeatWave Labs.
Its contents may not be reproduced without
express written permission of HeatWave Labs.

Notes:

1. Estimated operation (wire temperature):

- 01, Mo Filament
6.8V, 10.2A @ 1000 °C
10.0V, 12.0A @ 1200 °C
- 02, Pt Filament
11.8V, 12A @ 1000 °C
17.7V, 18A @ 1200 °C
- 03, Mo Filament
13.3V, 10.2A @ 1000 °C
19.5V, 12.0A @ 1200 °C
- 04, Mo Filament
8.9V, 10.2A @ 1000 °C
13.2V, 12.0A @ 1200 °C

DRAWN mcurtis	6/3/2011
CHECKED	
QA	
MFG	
APPROVED	

<i>HeatWave Labs, Inc.</i>		195 Aviation Way, Suite 100 P: 831-722-9081 Watsonville, CA 95076 F: 831-722-5491 www.cathode.com	
		Ø.375 x 4.0 UHV/O2 Heater Assembly	
SIZE A	Cage Code: 1YAN4	DWG NO 106881r4	REV 4
SCALE 1x			SHEET 2 OF 2