



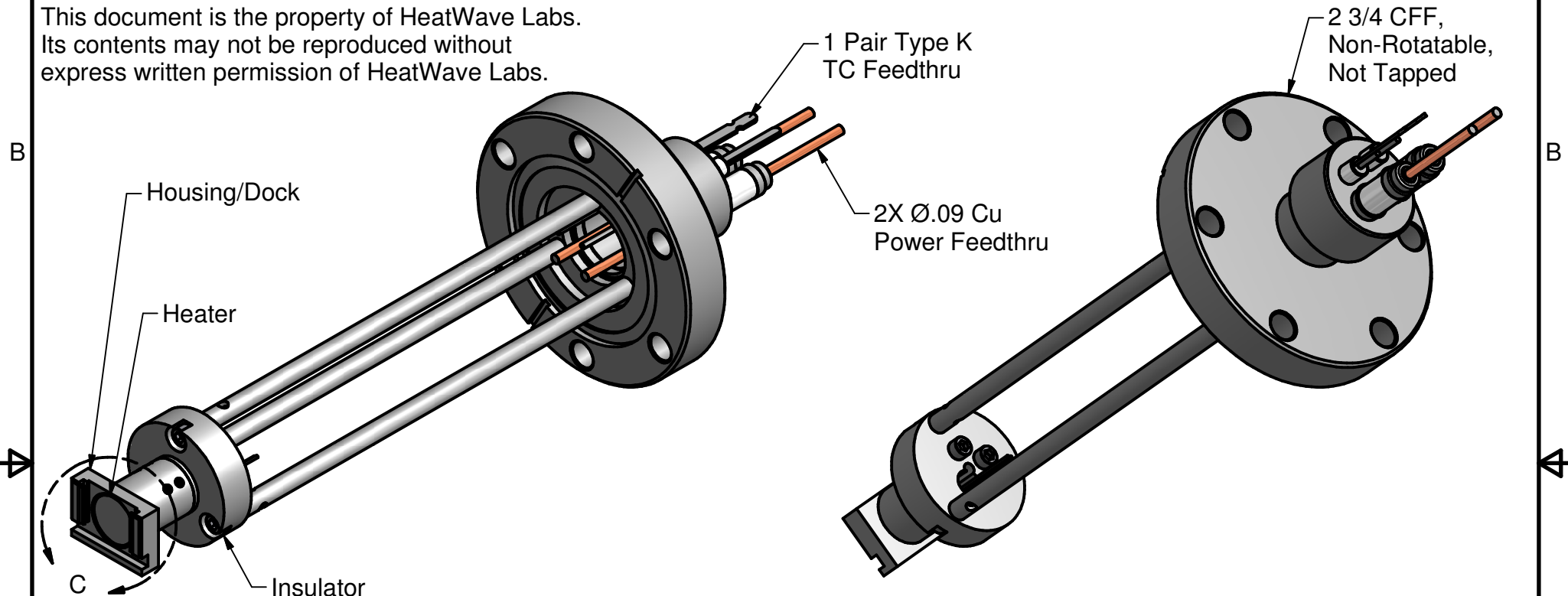
PARTS LIST

REVISION HISTORY

ITEM	QTY	PART NUMBE	DESCRIPTION
1	1	See Table A	2 3/4 CFF Mounted Heater wCustom Dock, BOM

REV	DESCRIPTION	DATE	APPROVE
1	Added dash numbers.	3/2/12	MC

This document is the property of HeatWave Labs.
 Its contents may not be reproduced without
 express written permission of HeatWave Labs.



Dash #	Heater	Dock	Clips	Atmosphere	Part #
-01	101275-28	SST	SST	O2	106661-01
-02	101137	Moly	Ta	UHV	106661-02

Notes:

- Wiring between heater and CFF not shown for clarity.
- Assembly to be leak tight to 1×10^{-9} cc/sec Helium.
- Estimated operation:
 - 01:
 - 3V, 6A @ 800°C
 - 5V, 9A @ 1000°C
 - 02:
 - 5.2V, 1.9A @ 800°C
 - 7.8V, 2.4A @ 1000°C

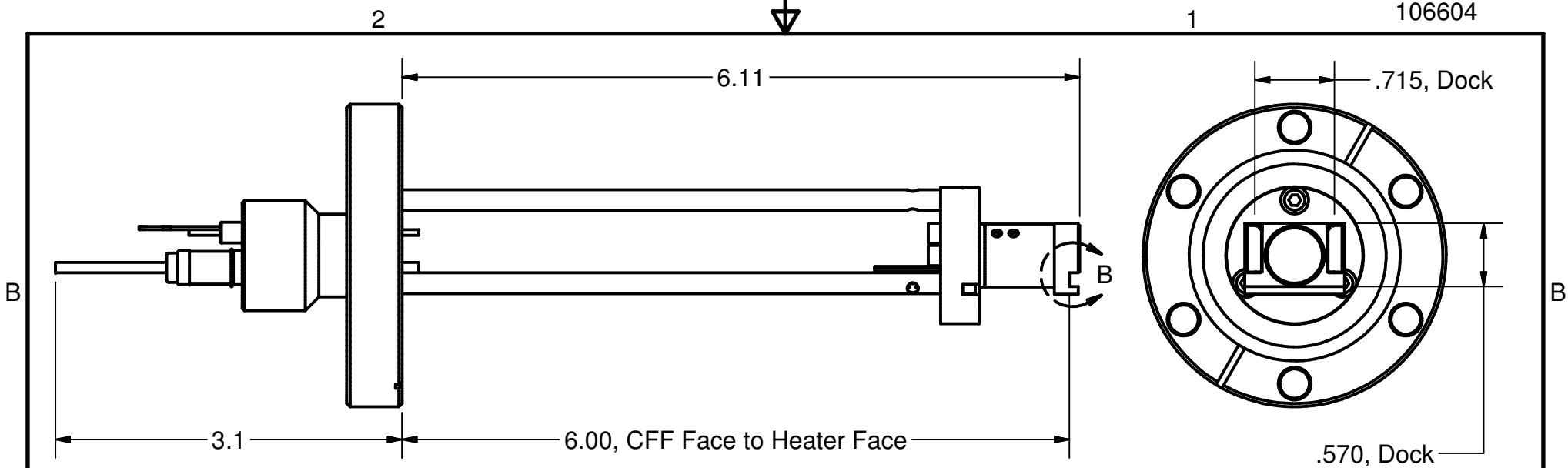
DRAWN mcurtis	12/20/2010
CHECKED	
QA	
MFG	
APPROVED	
Material:	
-	

HeatWave Labs, Inc.
 195 Aviation Way, Suite 100 P: 831-722-9081
 Watsonville, CA 95076 F: 831-722-5491
 www.cathode.com

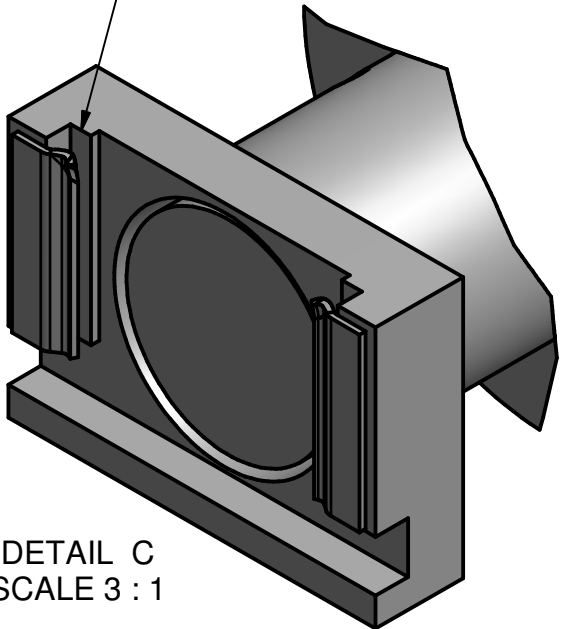
**2 3/4 CFF Mounted Ø1/2 Heater
 Assembly w/ Custom Dock**

SIZE A	Cage Code: 1YAN4	DWG NO 106604	REV 1
SCALE 3/4	SHEET 1 OF 2		

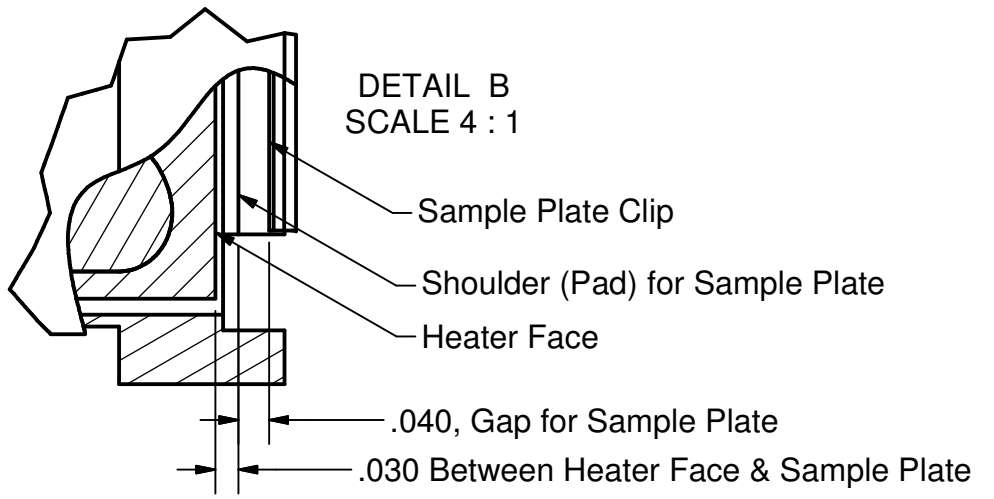




2X Pad, Sample Plate Pad to Prevent Heat Sinking to Housing



DETAIL C
SCALE 3 : 1



This document is the property of HeatWave Labs. Its contents may not be reproduced without express written permission of HeatWave Labs.

DRAWN mcurtis	12/20/2010
CHECKED	
QA	
MFG	
APPROVED	

<i>HeatWave Labs, Inc.</i>		195 Aviation Way, Suite 100 P: 831-722-9081 Watsonville, CA 95076 F: 831-722-5491 www.cathode.com	
2 3/4 CFF Mounted Ø1/2 Heater Assembly w/ Custom Dock			
SIZE A	DWG NO 106604	REV 1	
SCALE 3/4	SHEET 2 OF 2		