



PARTS LIST

ITEM	QTY	PART NUMBER	DESCRIPTION
1	1	106539	1200°C UHV Heater w/Tube, BOM

SST Outer Housing, Heater

15X MLI Layer,  
Ø3.95 x .002 Thick

15X Alumina Spacer,  
Ø3.95 x Ø3.65 x .04 Thick

SST Mounting Base

Type R Thermocouple,  
Heater, 16" Flying Leads

2X Alumina Spacer,  
Ø3.95 x Ø3.65 x .15 Thick,  
One on Either Side of GPHS

GPHS Layer,  
Ø3.95 x .10 Ta Disc

This View Shown w/out Customer  
Supplied Alumina Tube for Clarity

Customer Supplied Alumina  
Tube, Ø4.5 x Ø4.06 x 8.0

Notes:

1. Estimated operation:

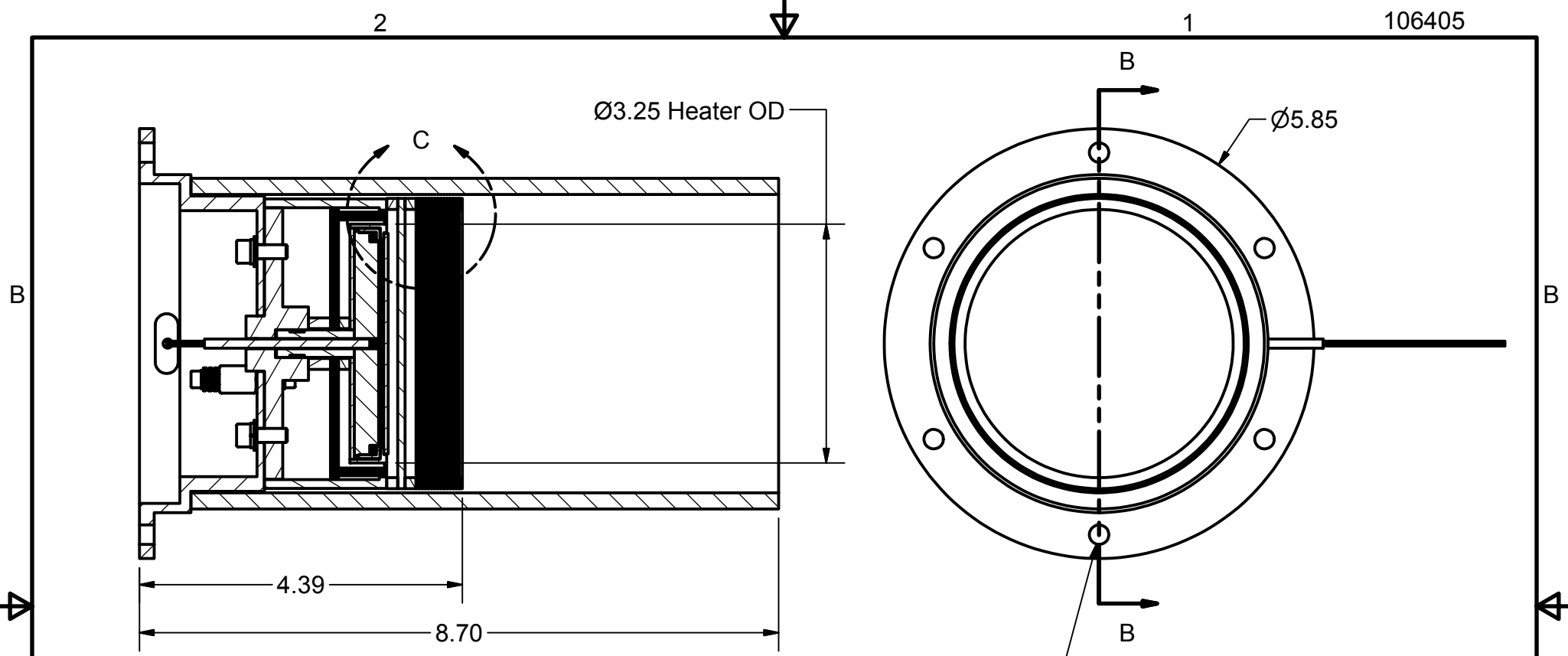
- 11.7V, 19.0A @ 800°C (222W)
- 17.5V, 24.6A @ 1000°C (430W)
- 27.3V, 29.6A @ 1200°C (808W)

This document is the property of HeatWave Labs.  
Its contents may not be reproduced without  
express written permission of HeatWave Labs.

DRAWN mcurtis	9/27/2010
CHECKED	
QA	
MFG	
APPROVED	
Material:	
-	

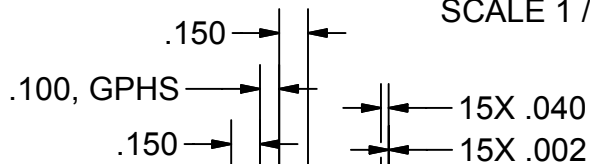
<b>HeatWave Labs, Inc.</b>		195 Aviation Way, Suite 100 P: 831-722-9081 Watsonville, CA 95076 F: 831-722-5491 www.cathode.com	
<b>1200°C UHV Heater Assembly w/Tube Mount, Type R TC</b>			
SIZE A	Cage Code: 1YAN4	DWG NO 106405	REV
SCALE 1/3			SHEET 1 OF 2





SECTION B-B  
SCALE 1 / 2

6X Ø.265 THRU  
On 5.20 BHC



DETAIL C  
SCALE 1 : 1

Moly  
Diffusor  
Plate

This document is the property of HeatWave Labs.  
Its contents may not be reproduced without  
express written permission of HeatWave Labs.

DRAWN mcurtis	9/27/2010
CHECKED	
QA	
MFG	
APPROVED	

**HeatWave Labs, Inc.**

195 Aviation Way, Suite 100 P: 831-722-9081  
Watsonville, CA 95076 F: 831-722-5491  
www.cathode.com

1200°C UHV Heater Assembly  
w/Tube Mount, Type R TC

SIZE A	DWG NO 106405	REV
SCALE 1/2	SHEET 2 OF 2	