

2



1

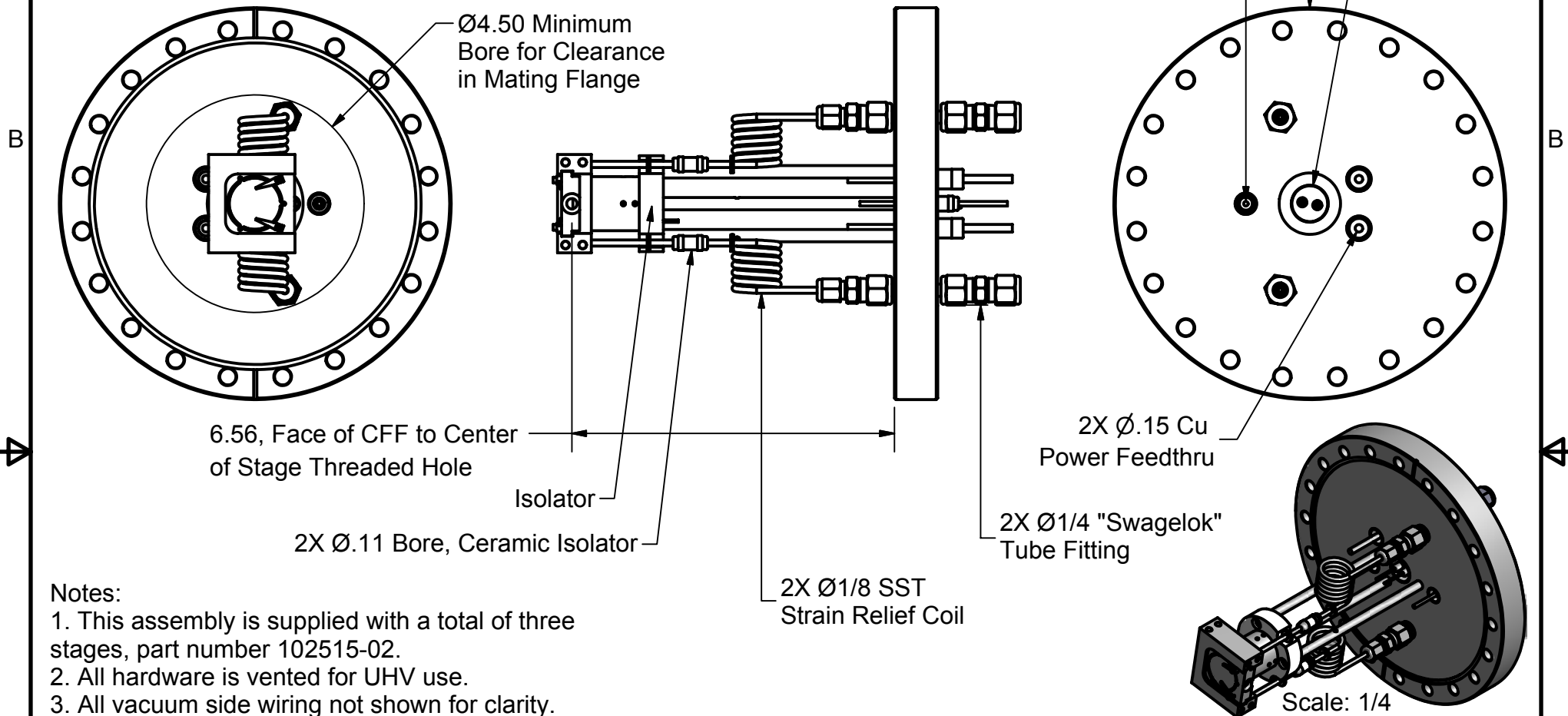
106288

## PARTS LIST

ITEM	QTY	PART NUMBER	DESCRIPTION
1	1	106331	8 CFF Mounted Dock & Satage, BOM

8 CFF, Non-Rotatable, Not Tapped

Ø.09 Cu Feedthru, 1kV Bias

Single Pair,  
Type K TC  
Feedthru

## Notes:

1. This assembly is supplied with a total of three stages, part number 102515-02.
2. All hardware is vented for UHV use.
3. All vacuum side wiring not shown for clarity.
4. The heater mounted inside the dock is an all Alumina construction (101275-27).
5. Estimated operation:  
14.5V, 8.0A @ 800°C  
18.5V, 9.1A @ 1000°C  
23.0V, 10.5A @ 1200°C

This document is the property of HeatWave Labs. Its contents may not be reproduced without express written permission of HeatWave Labs.

DRAWN mcurtis	7/14/2010
CHECKED	
QA	
MFG	
APPROVED	
Material:	
-	

**HeatWave Labs, Inc.**
 195 Aviation Way, Suite 100 P: 831-722-9081  
 Watsonville, CA 95076 F: 831-722-5491  
 www.cathode.com

**8 CFF Mounted Ø1.0 UHV Dock & Stage,  
 1kV Bias on Sample, Cooling on Dock**

SIZE	Cage Code:	DWG NO	REV
A	1YAN4	106288	

SCALE 1/3

SHEET 1 OF 1

2



1