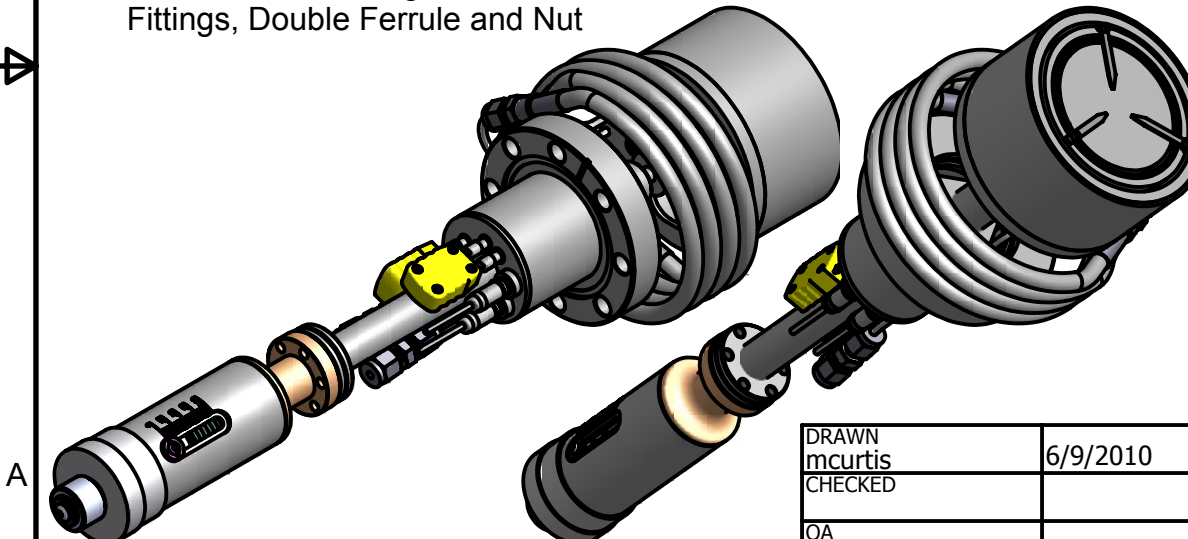
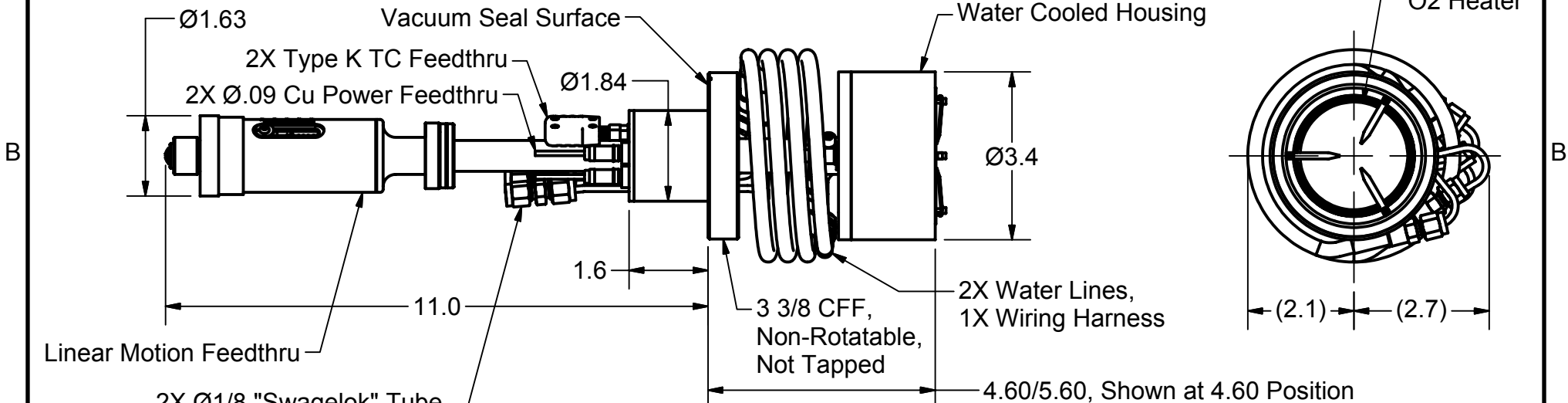




PARTS LIST

ITEM	QTY	PART NUMBER	DESCRIPTION
1	1	106264	Ø2.0 O2 Heater w/Water Cooling, BOM



Notes:

- Estimated operation:
 8.3V, 16.2A @ 800°C
 9.8V, 17.9A @ 900°C
 11.7V, 20.3A @ 1000°C
 15.2V, 24.3A @ 1100°C
- The second TC will be installed and have enough length for the customer to place it in contact with the sample.

DRAWN	mcurtis	6/9/2010
CHECKED		
QA		
MFG		
APPROVED		
Material:		
	-	

HeatWave Labs, Inc.
 195 Aviation Way, Suite 100 P: 831-722-9081
 Watsonville, CA 95076 F: 831-722-5491
 www.cathode.com

**Ø2.0 O2 Heater Assembly
 w/Water Cooling, 3 3/8 CFF Mounted**

SIZE	Cage Code:	DWG NO	REV
A	1YAN4	106143	
SCALE	1/3		SHEET 1 OF 1

This document is the property of HeatWave Labs. Its contents may not be reproduced without express written permission of HeatWave Labs.

