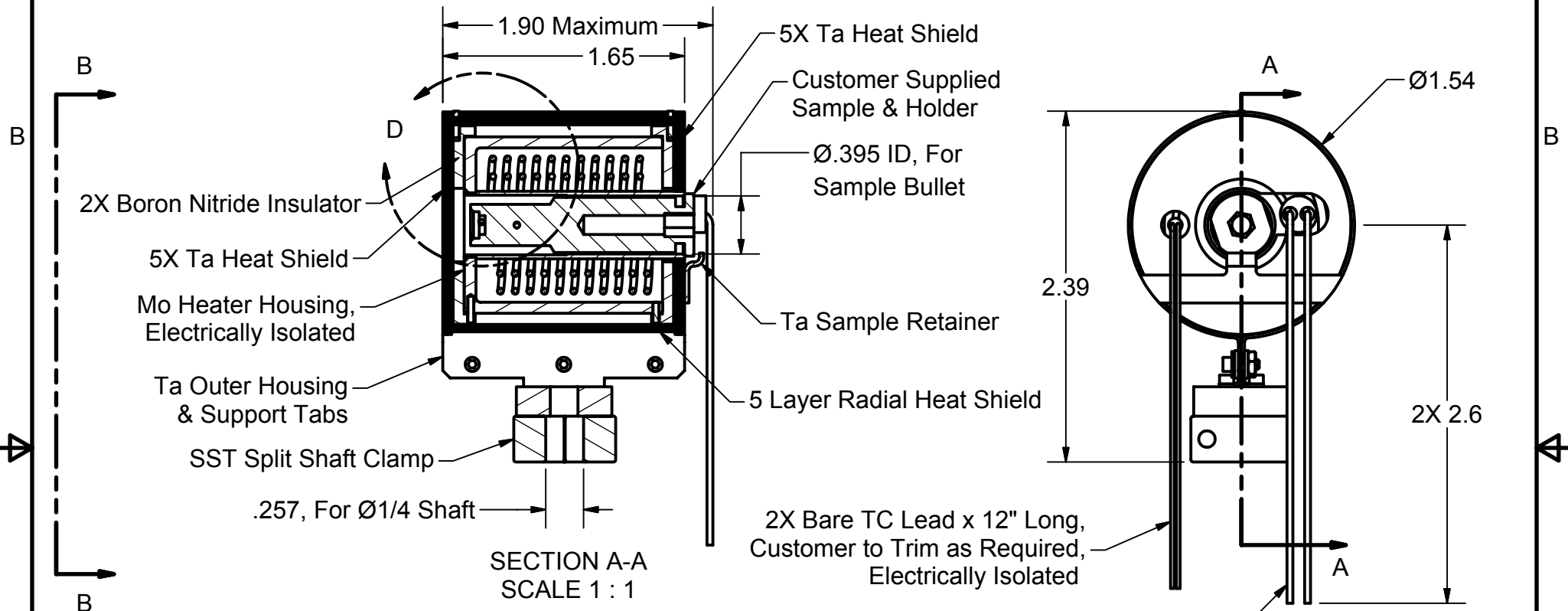




PARTS LIST

ITEM	QTY	PART NUMBER	DESCRIPTION
1	1	106134	1200°C, UHV Sample Heater Assy., BOM



Notes:

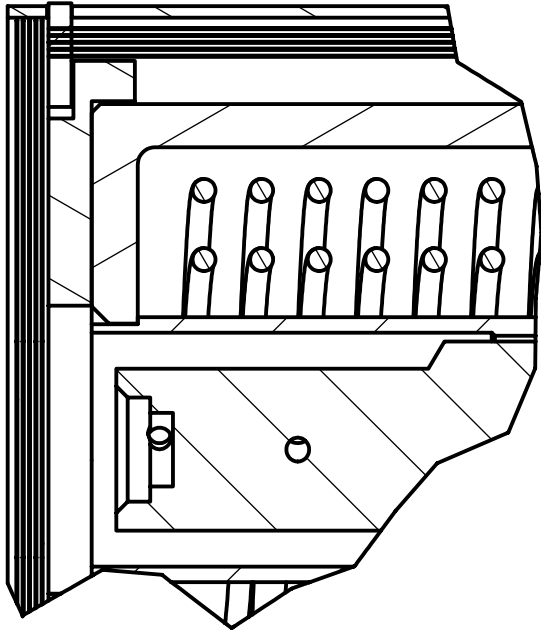
1. Strain relief must be provided for all wires.
2. Sample holder fits into a bore that is .01 larger ($\varnothing.395$) in diameter. This does not assist in maintaining the holders position.
3. Estimated operation:
 6.1V, 9.5A @ 800°C
 9.5V, 12.3A @ 1000°C
 14.7V, 14.8A @ 1200°C

This document is the property of HeatWave Labs. Its contents may not be reproduced without express written permission of HeatWave Labs.

DRAWN mcurtis	4/5/2010
CHECKED	
QA	
MFG	
APPROVED	
Material:	
-	

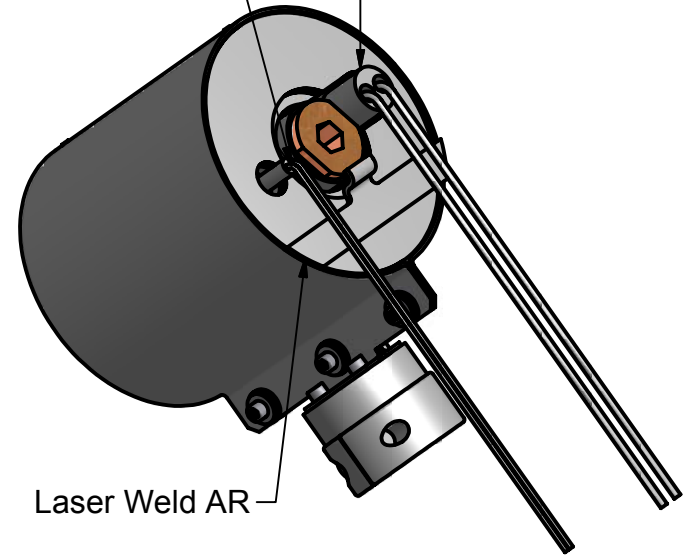
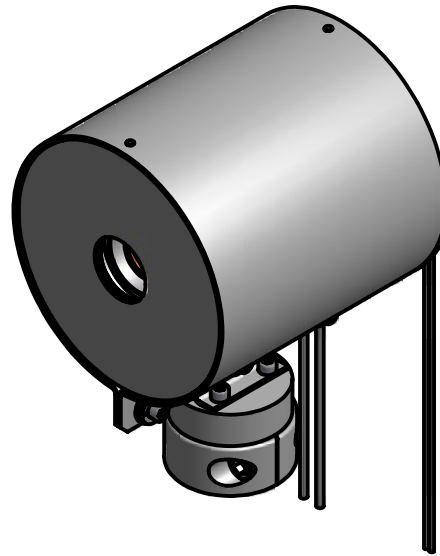
<i>HeatWave Labs, Inc.</i>		195 Aviation Way, Suite 100 P: 831-722-9081 Watsonville, CA 95076 F: 831-722-5491 www.cathode.com	
		1200°C, UHV Sample Heater Assembly	
SIZE A	Cage Code: 1YAN4	DWG NO 106059	REV
SCALE 1x	SHEET 1 OF 2		



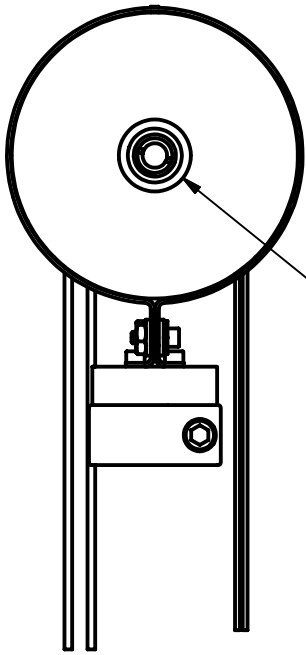


Alumina Insulator, Leads To be Insulated with Fish Spine Beads For a Minimum of 1.0 Length

Fish Spine Beads to be Added for 3.0 Length



DETAIL D
SCALE 3 : 1



VIEW B-B
SCALE 1 : 1

DRAWN mcurtis	4/5/2010
CHECKED	
QA	
MFG	
APPROVED	

HeatWave Labs, Inc.
 195 Aviation Way, Suite 100 P: 831-722-9081
 Watsonville, CA 95076 F: 831-722-5491
 www.cathode.com

1200°C, UHV Sample Heater Assembly

SIZE A	DWG NO 106059	REV
SCALE 1x	SHEET 2 OF 2	

B

B

A

A

2

1

1