

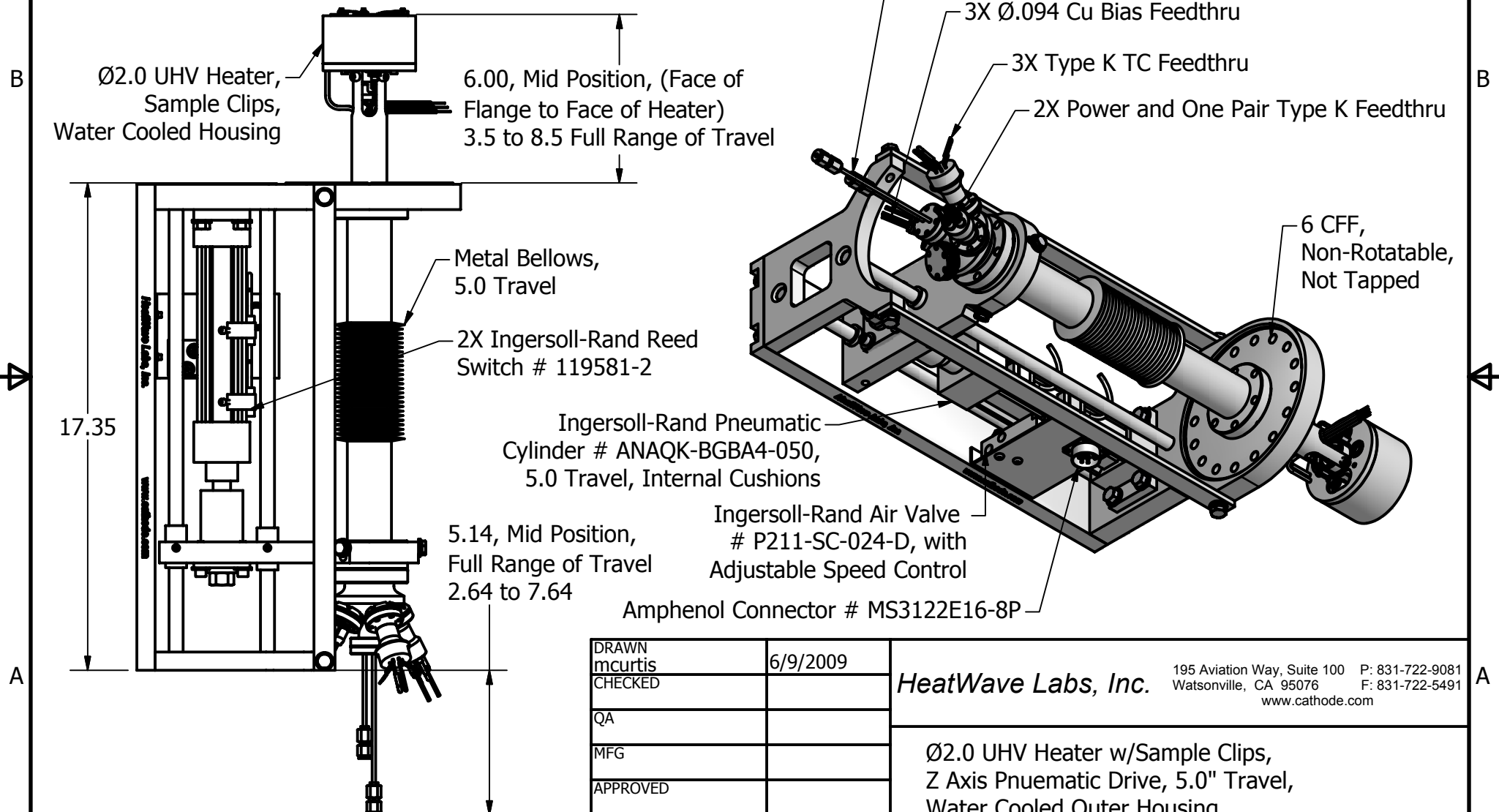


PARTS LIST

ITEM	QTY	PART NUMBER	DESCRIPTION
1	1	105421	Heater w/Z Axis, BOM
2	1	105438	Electrical Diagram
3	1	105439	Pneumatic Diagram

REVISION HISTORY

REV	DESCRIPTION	DATE	APPROVED
A	Made carriage thicker.	9/21/2009	MC



This document is the property of HeatWave Labs. Its contents may not be reproduced without express written permission of HeatWave Labs.

DRAWN mcurtis	6/9/2009
CHECKED	
QA	
MFG	
APPROVED	
Material:	-

HeatWave Labs, Inc.
 195 Aviation Way, Suite 100 P: 831-722-9081
 Watsonville, CA 95076 F: 831-722-5491
 www.cathode.com

Ø2.0 UHV Heater w/Sample Clips,
 Z Axis Pneumatic Drive, 5.0" Travel,
 Water Cooled Outer Housing

SIZE A	Cage Code: 1YAN4	DWG NO 105227	REV A
SCALE 1/5	SHEET 1 OF 2		





3X Ø.06 Bare Cu Bias Leads x 3.0 Long

Remove Plate and Nut to Change Hard Stop

3X Type "K" TC Extension Leads, Teflon Insulated x 3.0 Long

3X #4-40 x .10 ∇
On Ø1.80 BHC

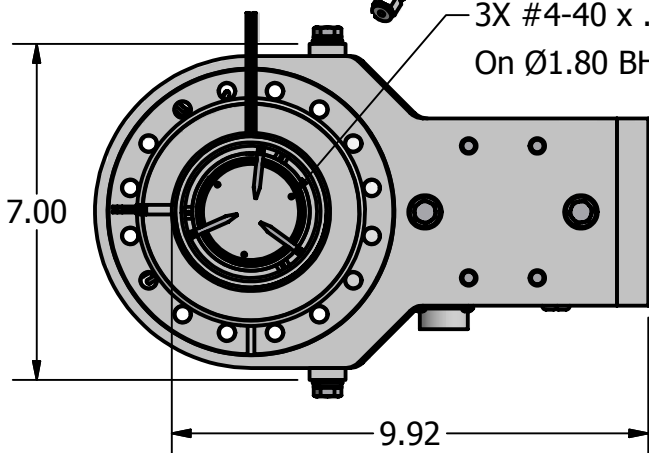
B

B



A

A



DRAWN mcurtis	6/9/2009
CHECKED	
QA	
MFG	
APPROVED	

HeatWave Labs, Inc.		195 Aviation Way, Suite 100 P: 831-722-9081 Watsonville, CA 95076 F: 831-722-5491 www.cathode.com	
Ø2.0 UHV Heater w/Sample Clips, Z Axis Pnuematic Drive, 5.0" Travel, Water Cooled Outer Housing			
SIZE A	DWG NO 105227	REV A	
SCALE 1/5	SHEET 2 OF 2		