

2



1

105111

PARTS LIST

ITEM	QTY	PART NUMBER	DESCRIPTION
1	1	105156	Ø1.0 800°C Alumina Heater, BOM

Notes:

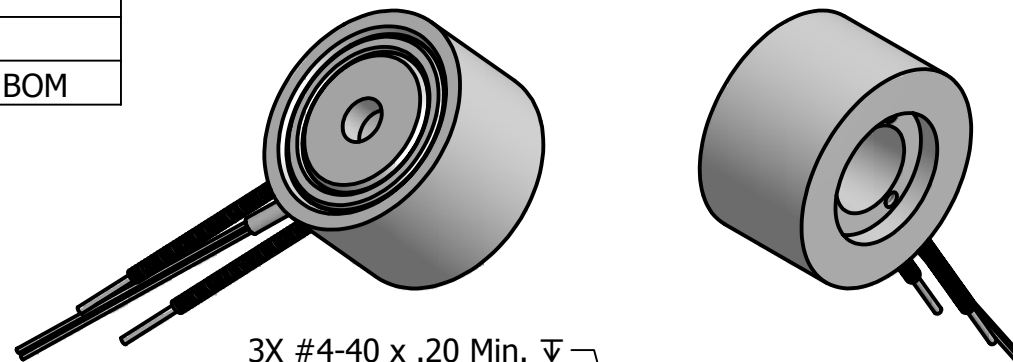
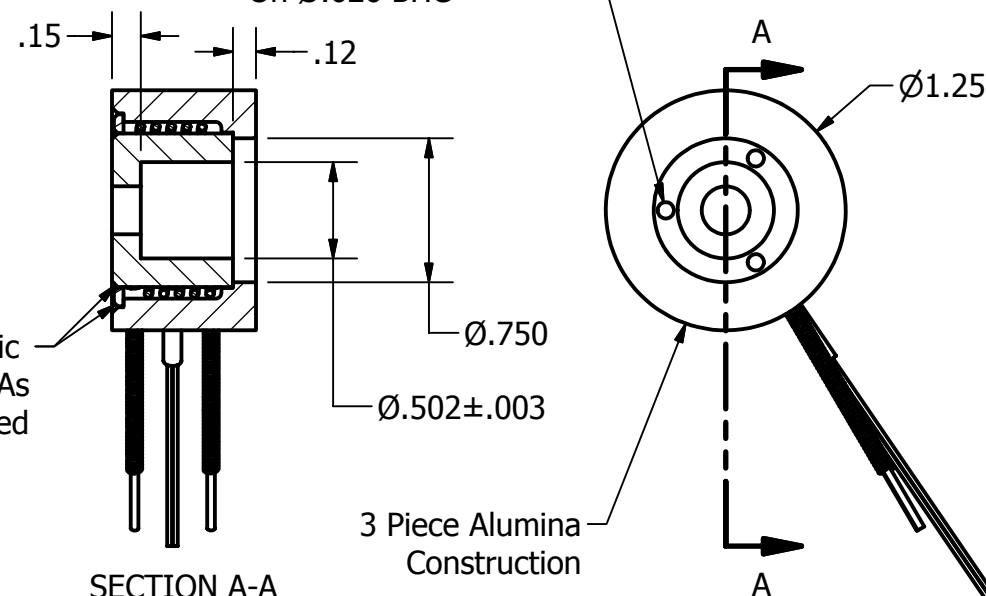
1. Estimated operation:

2.6V, 14.9A @ 400°C

3.9V, 18.4A @ 600°C

5.8V, 22.0A @ 800°C

2. Estimated operation is calculated for this heater with heat shielding in place.

3X #4-40 x .20 Min. ∇
On Ø.626 BHCSECTION A-A
SCALE 1 : 1

Ø.25 Thru

2X 1.5 Min.

2X HT Moly Heater
Lead w/Cooling CoilType "K" TC, Glued In Place,
Bare Leads To Be 48" Long Min.

DRAWN Marc Curtis	2/20/2009
CHECKED	
QA	
MFG	
APPROVED	
Material:	
Noted	

HeatWave Labs, Inc.195 Aviation Way, Suite 100 P: 831-722-9081
Watsonville, CA 95076 F: 831-722-5491
www.cathode.com

Ø1.0, 800°C Alumina Heater Assembly

SIZE	Cage Code:	DWG NO	REV
A	1YAN4	105111	

SCALE	SHEET 1 OF 1	
1x		

This document is the property of HeatWave Labs.
Its contents may not be reproduced without
express written permission of HeatWave Labs.

2



1