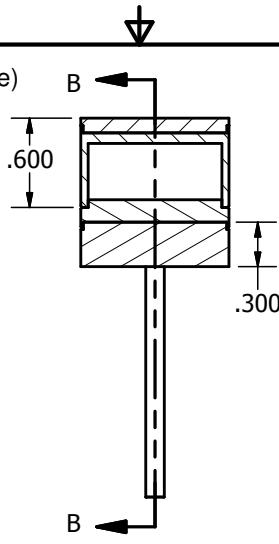
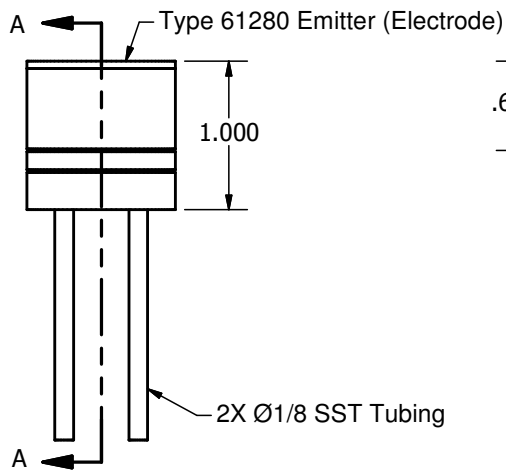
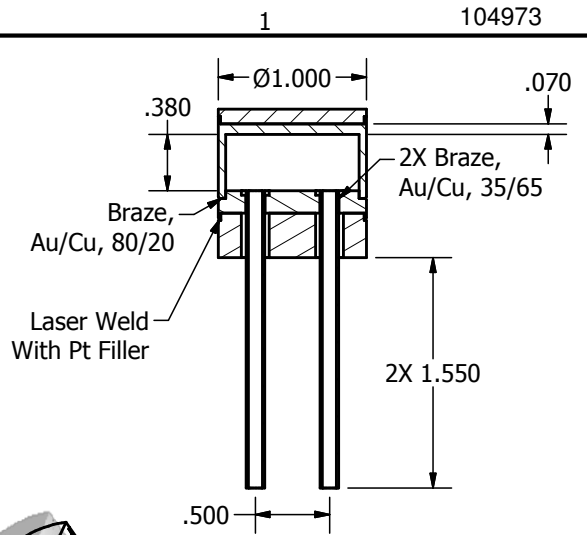


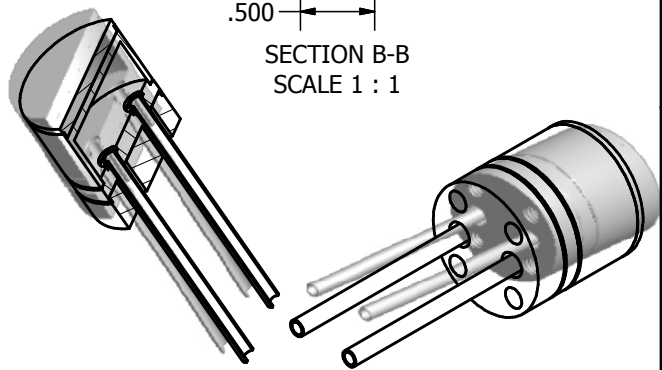
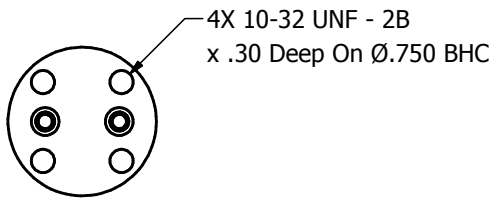
104973



SECTION A-A  
SCALE 1 : 1



SECTION B-B  
SCALE 1 : 1



Notes:

1. A full braze between the electrode and Moly housing is required to maintain a good thermal path. This braze shall be capable of 1050° C minimum service temperature.
2. The brazes for the water cooling channel must be leak tight to  $1 \times 10^{-9}$  cc/sec Helium.

This document is the property of HeatWave Labs. Its contents may not be reproduced without express written permission of HeatWave Labs.

DRAWN Marc Curtis	11/6/2008
CHECKED	
QA	
MFG	
APPROVED	
Material:	

<i>HeatWave Labs, Inc.</i>		195 Aviation Way, Suite 100 P: 831-722-9081 Watsonville, CA 95076 F: 831-722-5491 www.cathode.com	
Water Cooled Electrode Assembly			
SIZE A	Cage Code: 1YAN4	DWG NO 104973	REV
SCALE			SHEET 1 OF 2