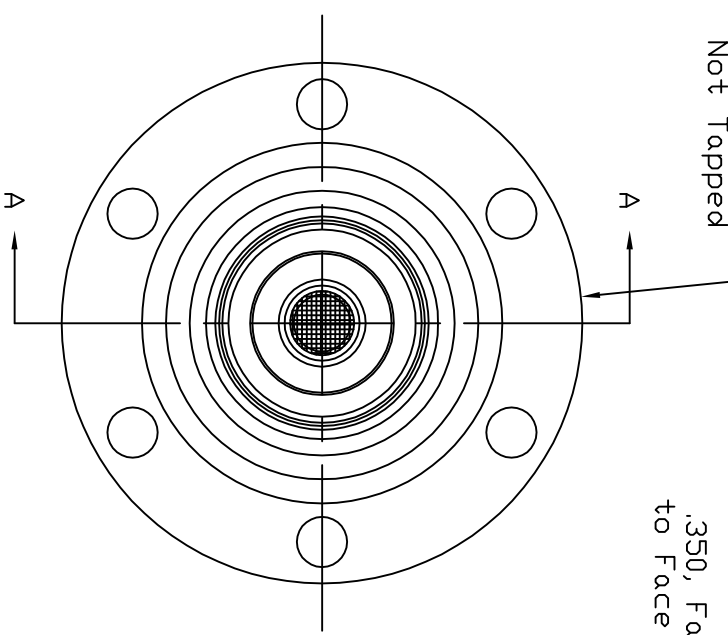
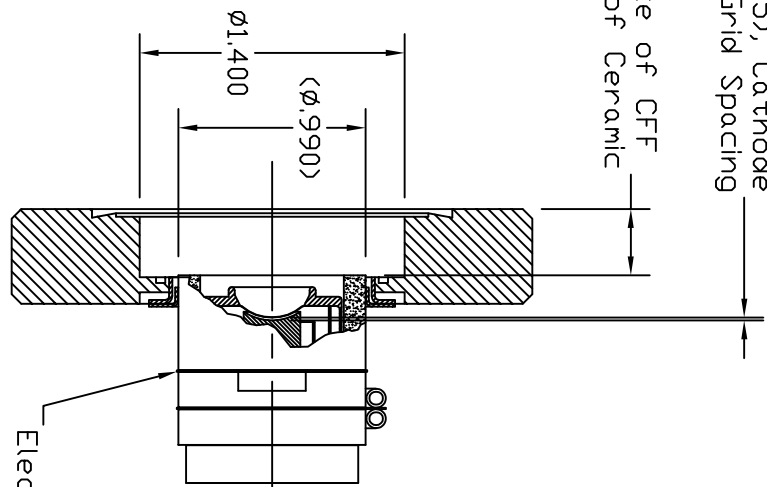


Dash #	Next Assembly
-	-

2 3/4 CFF,
Non-Rotatable,
Not Tapped



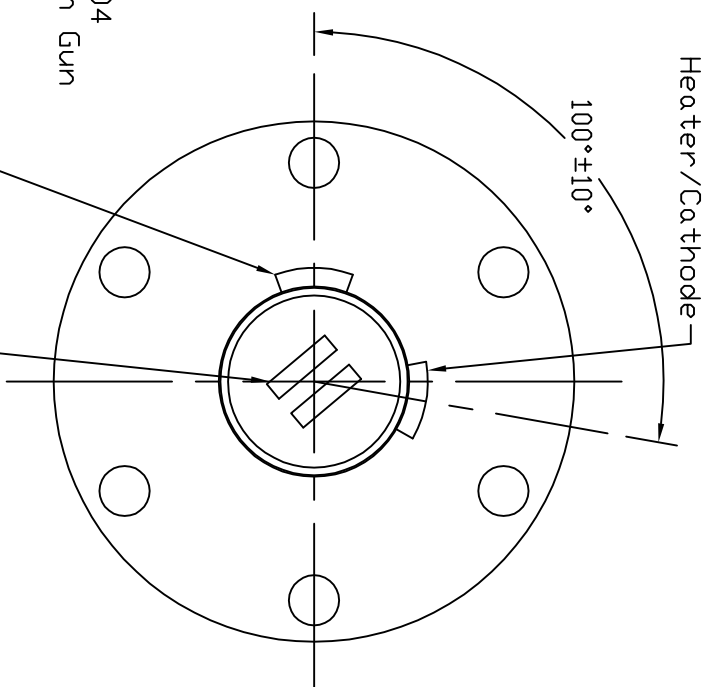
.350, Face of CFF
to Face of Ceramic
(.0145), Cathode
to Grid Spacing



View A-A

Grid, This Connector must be
Aligned with Hole in Flange

REVISIONS			
REV	DESCRIPTION	DATE	APPROVED
A	Added reference of flange hole to Cathode connection.	12/4/09	MC
B	Corrected view of connectors and added angles.	7/22/10	MC
C	100 degrees was 120 degrees. No change, just verification of manufac	8/28/10	MC
D	Final approval from customer. Release for manufacture.	9/3/10	MC
D	Added note 3.	6/10/11	MC



- Notes:
1. After assembly is complete, record all data fields on data sheet FM-152.
 2. Shipment of this assembly must include a copy of TB-147, TB-196, FM-152 and drawing 104909.
 3. The final assembly must be baked and Hi Pot tested per MP-259.
- This document is the property of HeatWave Labs. Its contents may not be reproduced or distributed without express written permission of HeatWave Labs.

UNLESS OTHERWISE SPECIFIED ALL DIMENSIONS ARE IN INCHES.
TOLERANCES ARE: XXX = ±.005 XX = ±.020 XXXX = ±.005
FINISH 63 MICROINCHES ANGLES 0 DEGREE ±30 MINUTES EDGES AND CORNERS .005 R MAX
MATERIAL
-
DD NOT SCALE DRAWING

Qty.	Part #	Description	Item #
1	104912	2 3/4 CFF Mounted 101304 E-Gun	1

HeatWave Labs, Inc.
195 Aviation Way, Suite 100 (831) 722-9081
Watsonville, Ca. 95076 Fax: (831) 722-5491
Website: www.cathode.com

BY	DATE
ENGR	9/18/08

SIZE	Code Code	DWG. NO.	REV
A	1YAN4	104909	D

THIRD ANGLE PROJECTION SCALE: 1x SHEET: