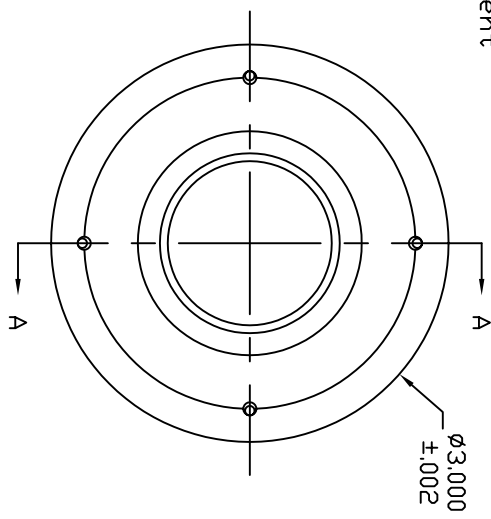
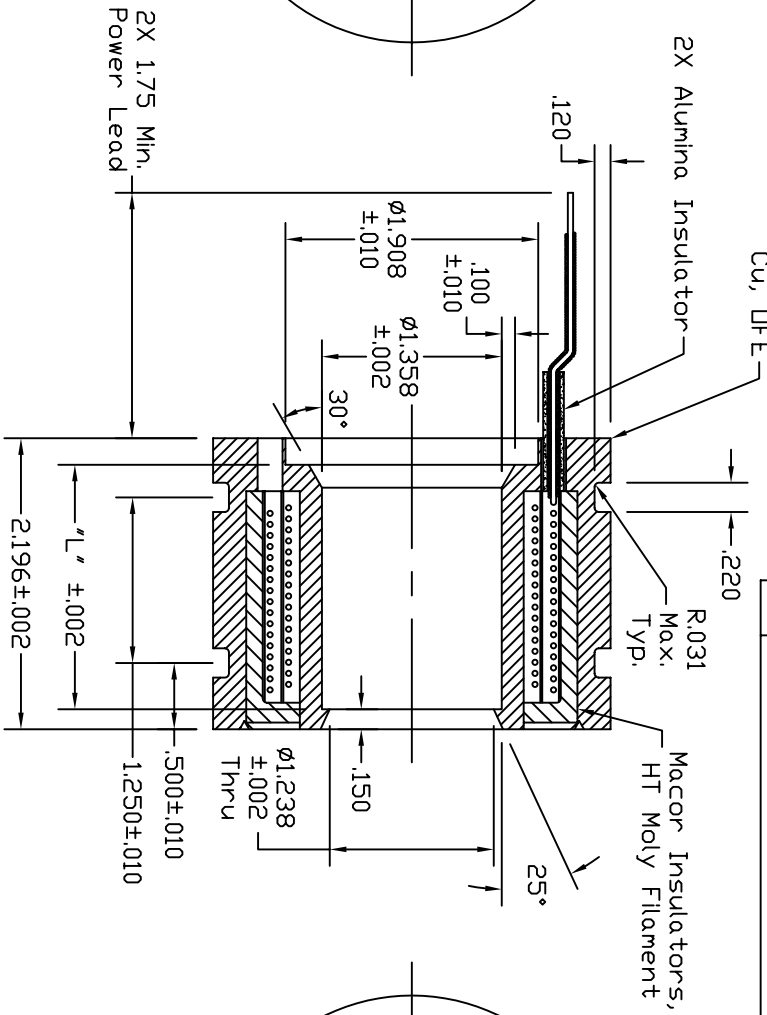
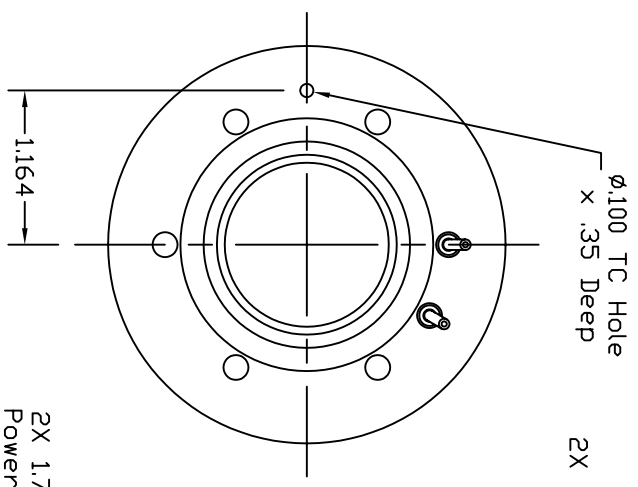


Dash #	Next Assembly
-	-

REVISIONS			
REV	DESCRIPTION	DATE	APPROVED
A	Added dash numbers and Table A.	10/8/08	MC
B	the 25 degree angle was 22 degrees.	12/15/09	MC



Dash #	"L" $\pm .002$
-01	1.846
-02	1.560

- Notes:
- Estimated operation:
 - 01: 12.9V, 10.5A @ 700°C
 - 02: 11.5V, 9.7A @ 600°C

This document is the property of HeatWave Labs. Its contents may not be reproduced or distributed without express written permission of HeatWave Labs.

UNLESS OTHERWISE SPECIFIED ALL DIMENSIONS ARE IN INCHES.
 TOLERANCES ARE:
 .XXXX = $\pm .005$ XX = $\pm .020$
 .XXXXX = $\pm .0005$
 FINISH 63 MICRONDINCHES
 ANGLES 0 DEGREE ± 30 MINUTES
 EDGES AND CORNERS .005 R MAX

Qty.	Part #	Description	Item #
1	104948	$\phi 3.0$ UHV 600°C Heater Assembly	-
-	104635	$\phi 3.0$ UHV 700°C Heater Assembly	-

HeatWave Labs, Inc.
 195 Aviation Way, Suite 100 (831) 722-9081
 Watsonville, Ca. 95076 Fax: (831) 722-5491
 Website: www.cathode.com

BY DATE
 ENGR M.Curtis 2-10-08

HeatWave Labs, Inc.
 Heater Assembly
 $\phi 3.0$ UHV Cu

SIZE A Cage Code 1YAN4 DWG. NO. 104551 REV B

DD NOT SCALE DRAWING SCALE: 0.7X SHEET: 1/1