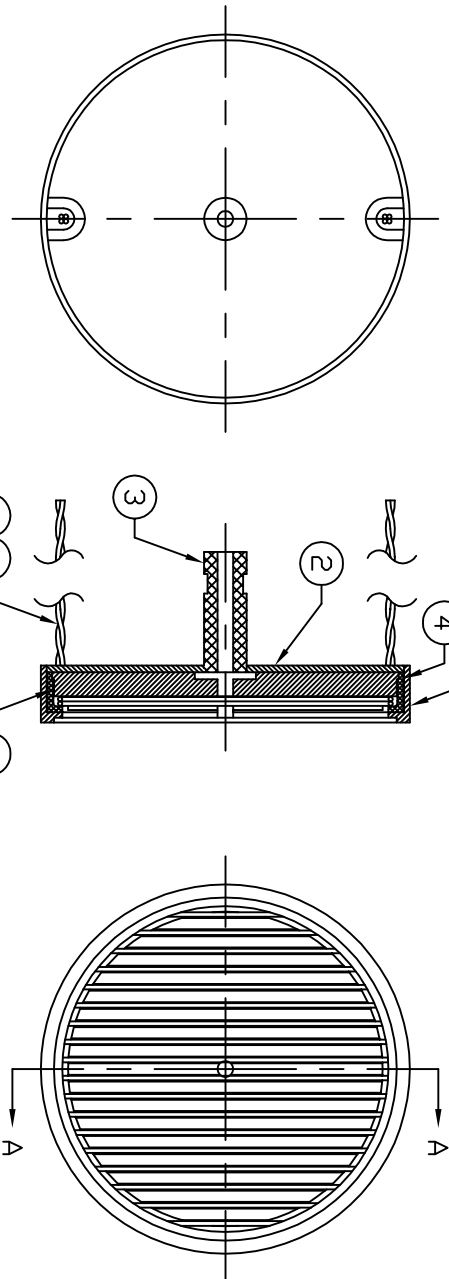


Dash # Next Assembly  
- 104249

REVISIONS			
REV	DESCRIPTION	DATE	APPROVED
1	Added fixture to BOM,	6/6/11	MC



View A-A

-02		-01			
Qty.	Part #	Qty.	Part #	Description	Item #
1	104353	1		Filament Forming Fixture	8
2 Per	-	-		Helper Leads, $\phi$ .040 HT Moly	7
-	-	2 Per	-	Helper Leads, $\phi$ .040 Pt/Rh	7
1	-	-	Note 1	Filament, $\phi$ .040 HT Moly	6
-	-	1	Note 1	Filament, $\phi$ .040 Pt/Rh	6
1	104250	1		Rear Filament Insulator	5
1	104251	1		Front Filament Insulator	4
1	104280	1		Stem	3
1	104279	1		Back Plate	2
1	104278	1		Heater Housing	1

- Notes:
1. Active length is 42.0 each strand, 2 strand filament. Total length is 50.0 each strand.
  2. Assembly should be keyed to prevent the ceramic parts from spinning.

This document is the property of HeatWave Labs. Its contents may not be reproduced or distributed without express written permission of HeatWave Labs.

UNLESS OTHERWISE SPECIFIED ALL DIMENSIONS ARE IN INCHES.	
TOLERANCES ARE:	XX = $\pm$ .020
XXX = $\pm$ .005	XXXX = $\pm$ .0005
FINISH 63 MICROINCHES	
ANGLES 0 DEGREE $\pm$ 30 MINUTES	
EDGES AND CORNERS .005 R MAX	
MATERIAL	-
DD NOT SCALE DRAWING	

HeatWave Labs, Inc.  
 195 Aviation Way, Suite 100 (831) 722-9081  
 Watsonville, Ca. 95076 Fax: (831) 722-5491  
 Website: www.cathode.com

BY DATE  
 ENGR M.Curtis 6/11/07

SIZE  $\phi$ 3.0 1200°C Heater Assy.  
 Cage Code DWG. NO. 104267  
 1YAN4

THIRD ANGLE PROJECTION SCALE: 06x SHEET: 1/1