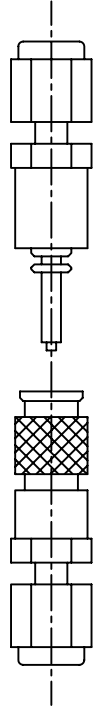
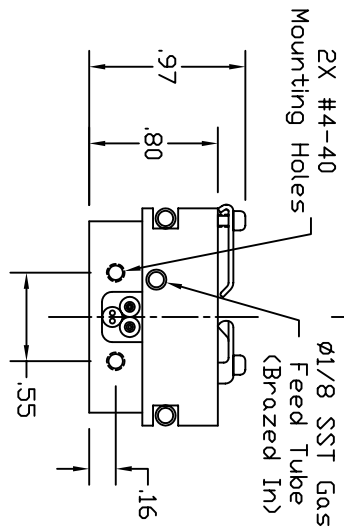
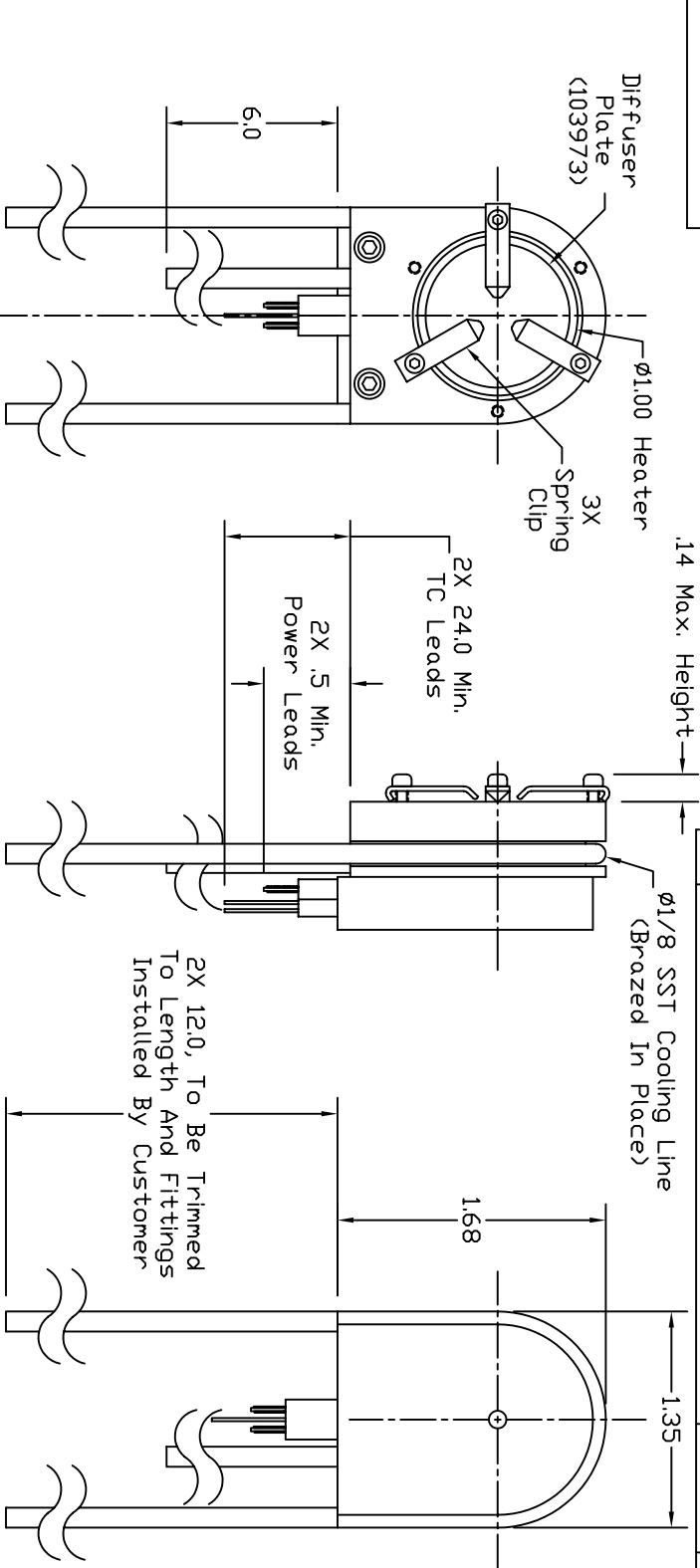


Dash # Next Assembly

- -

REVISIONS

| REV | DESCRIPTION | DATE | APPROVED |
|-----|-------------|------|----------|
| | | | |



"Swagelok" Miniature Quick Connects (SS-QM2-D-200 & SS-QM2-B-200)
2 Assemblies Supplied for Cooling Lines

| Qty. | Part # | Description | Item # |
|------|--------|--|--------|
| 1 | 103998 | Optional Top Cover (Not Shown) | 2 |
| 1 | 103979 | $\phi 1.0$ Low Profile D2 Heater Assy. | 1 |

HeatWave Labs, Inc.
195 Aviation Way, Suite 100 (831) 722-9081
Watsonville, Ca. 95076 Fax: (831) 722-5491
Website: www.cathode.com

$\phi 1.0$ Low Profile
D2 Heater Assembly

Notes:
1. This document is the property of HeatWave Labs. Its contents may not be reproduced or distributed without express written permission of HeatWave Labs.

UNLESS OTHERWISE SPECIFIED ALL DIMENSIONS ARE IN INCHES.
TOLERANCES ARE:
XXX = $\pm .005$ XX = $\pm .020$
XXXX = $\pm .0005$
FINISH 63 MICRONDICES
ANGLES 0 DEGREE ± 30 MINUTES
EDGES AND CORNERS .005 R MAX

MATERIAL -

DD NOT SCALE DRAWING

| SIZE | Cage Code | DWG. NO. | REV |
|------|-----------|----------|-----|
| A | 1YAN4 | 103972 | - |

SCALE: 0.85X SHEET: 1/1