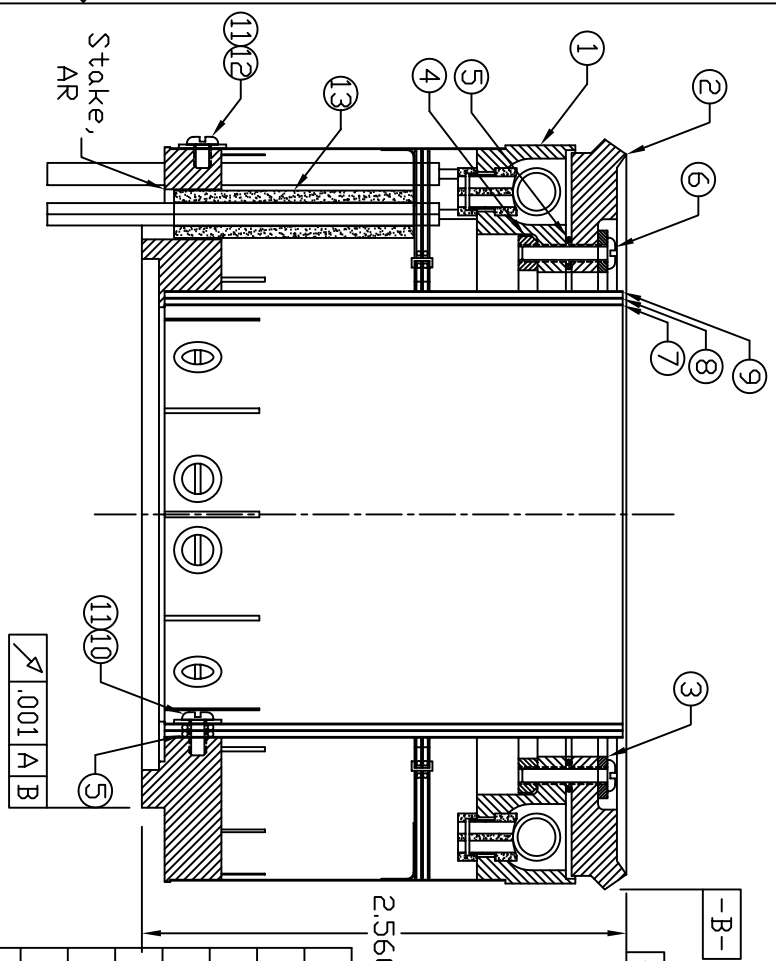


Dash #	Next Assembly
-	103773

REVISIONS			
REV	DESCRIPTION	DATE	APPROVED



2	103882	Lead Insulator	13
-	-	#2-56 x 1/8 SST SHCS, Vented	12
-	-	#2 SST Flat Washer (Bent?)	11
-	-	#2-56 x 3/16 SST SHCS, Vented	10
1	103881-03	Radial Heat Shield	9
1	103881-02	Radial Heat Shield	8
1	103881-01	Radial Heat Shield	7
26	-	#2-56 x	6
44	103880	Spacer	5
6	103879	Anchor Segment	4
1	103878	Clamp Ring	3
1	103877	Cathode	2
1	103876	Filament Assembly	1
Qty.	Part #	Description	Item #

HeatWave Labs, Inc.
 195 Aviation Way, Suite 100 (831) 722-9081
 Watsonville, Ca. 95076 Fax: (831) 722-5491
 Website: www.cathode.com

Improved MIG Assy

BY	DATE	SIZE	Cage Code	DWG. NO.	REV
ENGR	M.Curtis	A	1YAN4	103823	-
	11-24-06				

UNLESS OTHERWISE SPECIFIED
 ALL DIMENSIONS ARE IN INCHES.
 TOLERANCES ARE:
 .XXX = ±.005 .XX = ±.020
 .XXXX = ±.0005
 FINISH 63 MICROINCHES
 ANGLES 0 DEGREE ±30 MINUTES
 EDGES AND CORNERS .005 R MAX

This document is the property of HeatWave Labs. Its contents may not be reproduced or distributed without express written permission of HeatWave Labs.

Notes:
 1.

DD NOT SCALE DRAWING

THIRD ANGLE PROJECTION
 SCALE: 1x
 SHEET: 1/1