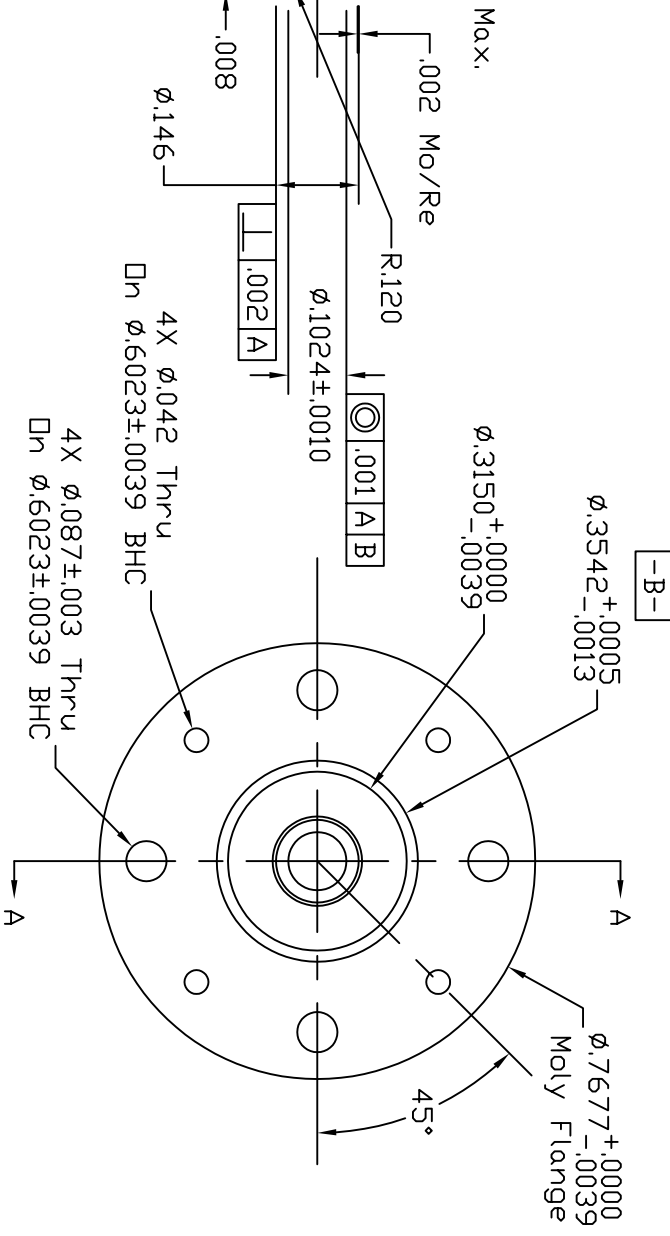
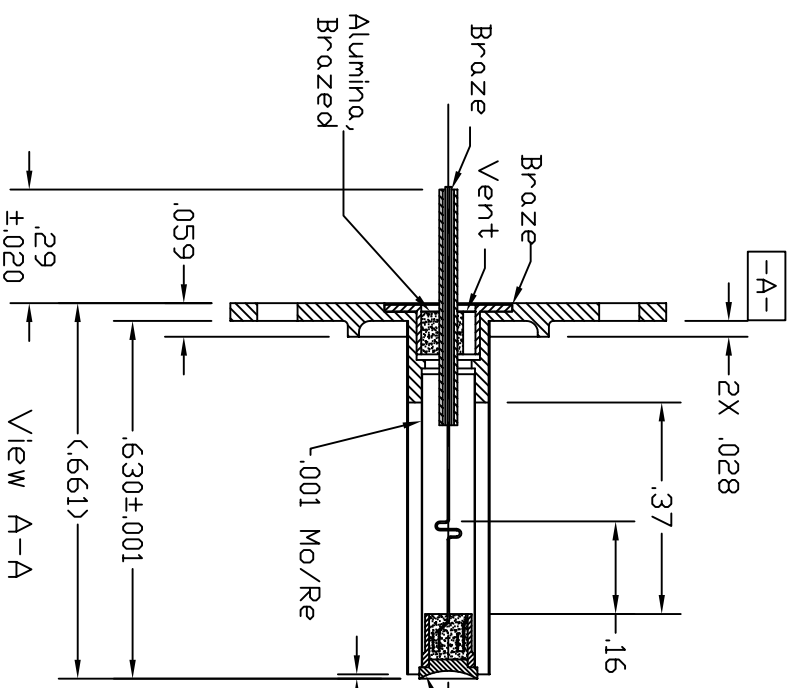


Dash #	Next Assembly
-	-

REVISIONS			
REV	DESCRIPTION	DATE	APPROVED
A	Tolerance on boes OD was +/- .0039, changed lead from coil to bend.	6/9/06	MC
A1/A5	Design changes for thermal improvements & header notes.	7/4/06	MC
B	Changed attachment of feedthr to braze to base and lead.	11/21/06	MC



This document is the property of HeatWave Labs. Its contents may not be reproduced or distributed without express written permission of HeatWave Labs.

- Notes:
1. Heater lead to have 2 helper wires (ϕ .003 HT Moly) and a cooling coil (ϕ .002 HT Moly, major DD of ϕ .011) buried in the potting and exiting through the feedthru assembly. Filament wire is ϕ .003 W.
 2. Cathode type is 612X80.
 3. Filament cold resistance to be 1.5 - 2.0 ohms.

UNLESS OTHERWISE SPECIFIED
ALL DIMENSIONS ARE IN INCHES.
TOLERANCES ARE:
XXXX = ±.005 XX = ±.020
FINISH 63 MICRONS
ANGLES 0 DEGREE ±30 MINUTES
EDGES AND CORNERS .065 R MAX

MATERIAL	
-	

DD NOT SCALE DRAWING		
----------------------	--	--

1	103571	ϕ .102 Cathode Heater Assembly	1
Qty.	Part #	Description	Item #

HeatWave Labs, Inc.
195 Aviation Way, Suite 100 (831) 722-9081
Watsonville, Ca. 95076 Fax: (831) 722-5491
Website: www.cathode.com

BY	DATE	ϕ .102 Cathode/Heater w/Base
ENGR	M.Curtis	
5/30/06		

SIZE	Cage Code	DWG. NO.	REV
A	1YAN4	103570	B

THIRD ANGLE PROJECTION SCALE: 3X SHEET: 1/1