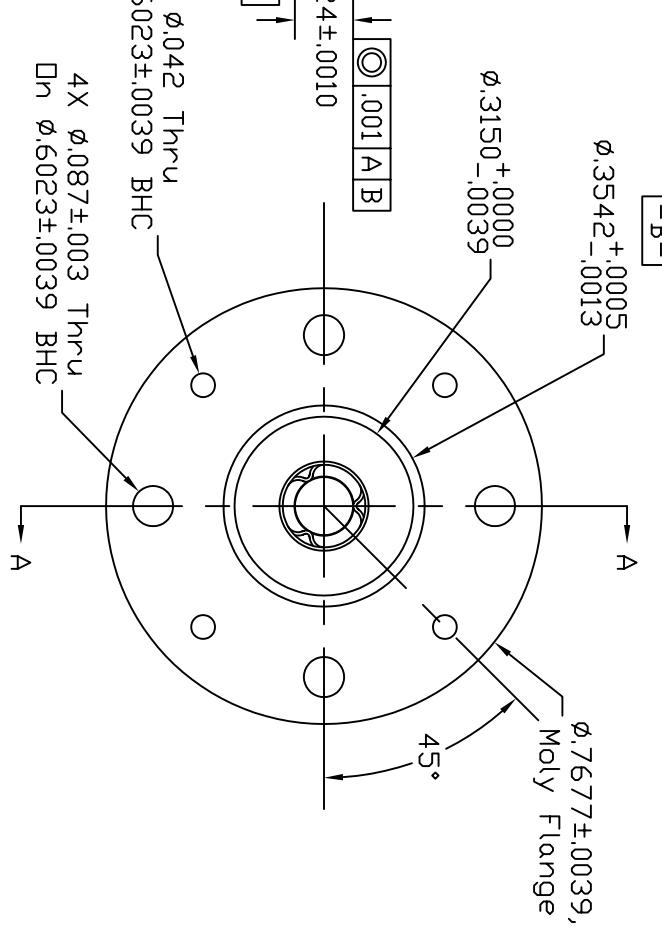
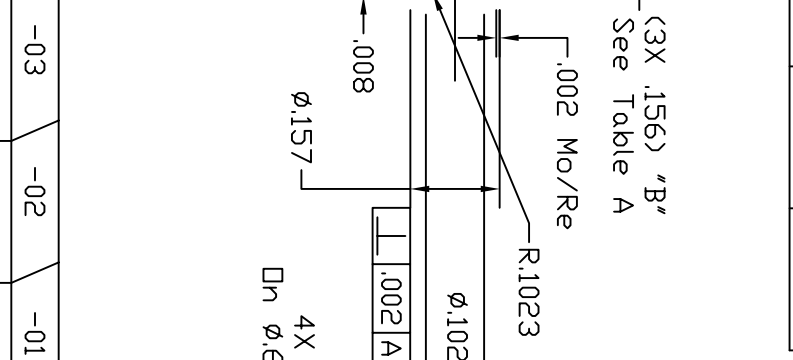
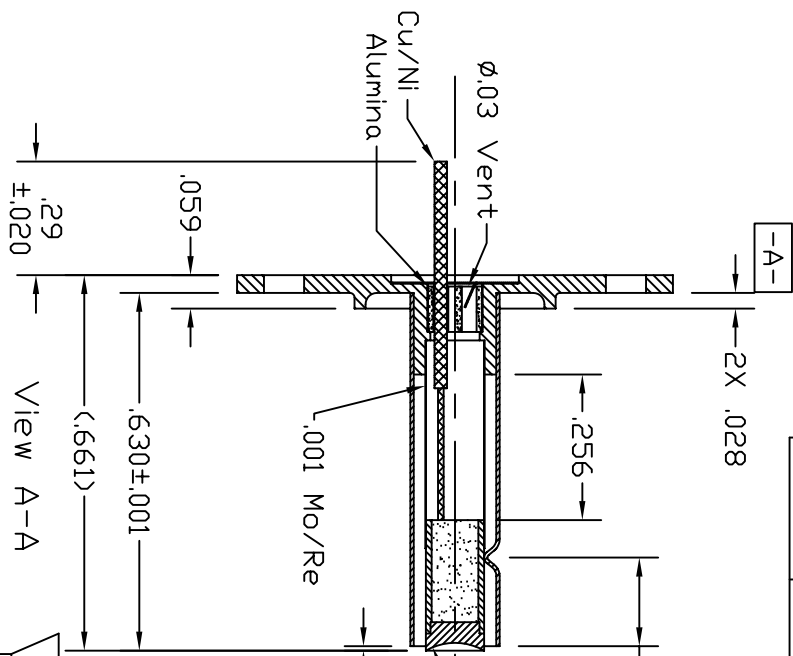


Dash #	Next Assembly
-	-

Table A			
Dash #	Imp	"B"	Ref.
-01	612X80	No	EM1
-02	612X80	No	EM2
-03	612X80	Yes	Spare

REVISIONS			
REV	DESCRIPTION	DATE	APPROVED
A	Added .042 holes, .087 holes was .071, added -03.	12/13/05	MC
B	Added details of insulator feedthru to reflect as manufactured.	1/16/06	MC
C	Added .29 lead length.	3/30/06	MC



- Notes:
1. General tolerance  $\pm .005$ .
  2. Power consumption not to exceed 2.8 Watts at cathode operating temperature.

This document is the property of HeatWave Labs. Its contents may not be reproduced or distributed without express written permission of HeatWave Labs.

Qty.	Part #	Description	Item #
-	-	-	-
1	103368	0.102 Cathode/Heater w/Base	-
-	-	-	-
1	103369	0.102 Cathode/Heater w/Base	-
-	-	-	-
1	103368	0.102 Cathode/Heater w/Base	-

UNLESS OTHERWISE SPECIFIED ALL DIMENSIONS ARE IN INCHES.

TOLERANCES ARE:  
 .XXXX =  $\pm .005$   
 .XX =  $\pm .020$   
 .XXX =  $\pm .005$   
 .XXXX =  $\pm .005$   
 FINISH 63 MICROINCHES  
 ANGLES 0 DEGREE  $\pm 30$  MINUTES  
 EDGES AND CORNERS .063 R MAX

MATERIAL: -

DD NOT SCALE DRAWING

HeatWave Labs, Inc.  
 195 Aviation Way, Suite 100 (831) 722-9081  
 Watsonville, Ca. 95076 Fax: (831) 722-5491  
 Website: www.cathode.com

BY: M.Curtis DATE: 8/8/05

SIZE: A  
 Code: 1YAN4  
 DWG. NO.: 103167  
 SCALE: 3X  
 SHEET: 1/1