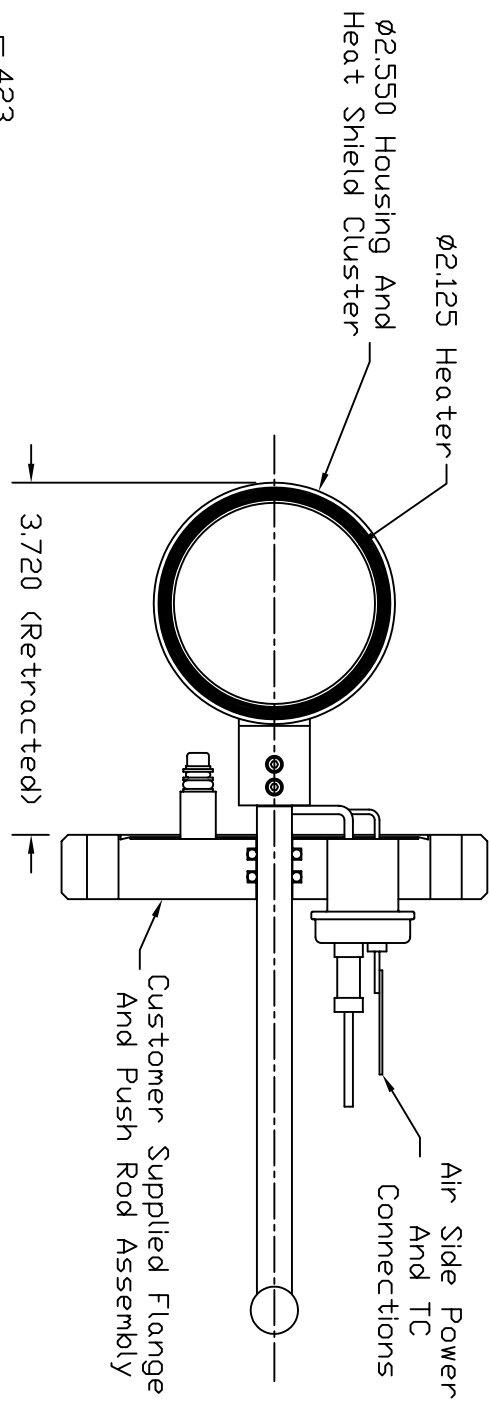
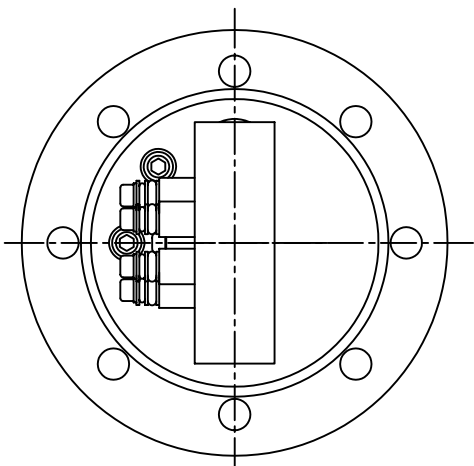


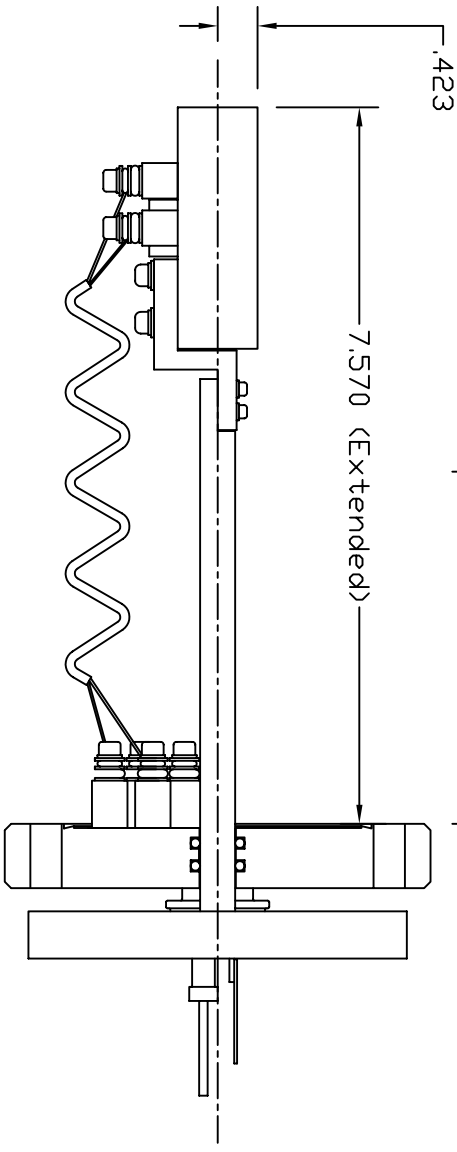
Dash #	Next Assembly
-	-

Notes:

1. Assembly to operate inside a  $\phi 2.80$  ID tube.
2. Estimated operation:  
 7.5V, 17.0A @ 500°C  
 8.7V, 17.7A @ 800°C  
 12.0V, 20.8A @ 1000°C



REVISIONS			
REV	DESCRIPTION	DATE	APPROVED
A	Part #103139 design changed so customer can change heater.	6/5/06	MC



This document is the property of HeatWave Labs. Its contents may not be reproduced or distributed without express written permission of HeatWave Labs.

UNLESS OTHERWISE SPECIFIED  
 ALL DIMENSIONS ARE IN INCHES.  
 TOLERANCES ARE:  
 .XXX =  $\pm .005$  XX =  $\pm .020$   
 .XXXX =  $\pm .0005$   
 FINISH 63 MICRONDICHES  
 ANGLES 0 DEGREE  $\pm 30$  MINUTES  
 EDGES AND CORNERS .005 R MAX

MATERIAL  
 -

DD NOT SCALE DRAWING

Qty.	Part #	Description	Item #
1	103133	$\phi 2.0$ Heater, Flange Mounted	-

**HeatWave Labs, Inc.**  
 195 Aviation Way, Suite 100 (831) 722-9081  
 Watsonville, Ca. 95076 Fax: (831) 722-5491  
 Website: www.cathode.com

BY DATE  
 ENGR M.Curtis 6/21/05

$\phi 2.0$  Heater, Mounted  
 To Customer Flange Assy.

SIZE Coge Code DWG. NO. REV  
 A 1VAN4 103130 A

THIRD ANGLE PROJECTION SCALE: 0.5X SHEET: 1/1