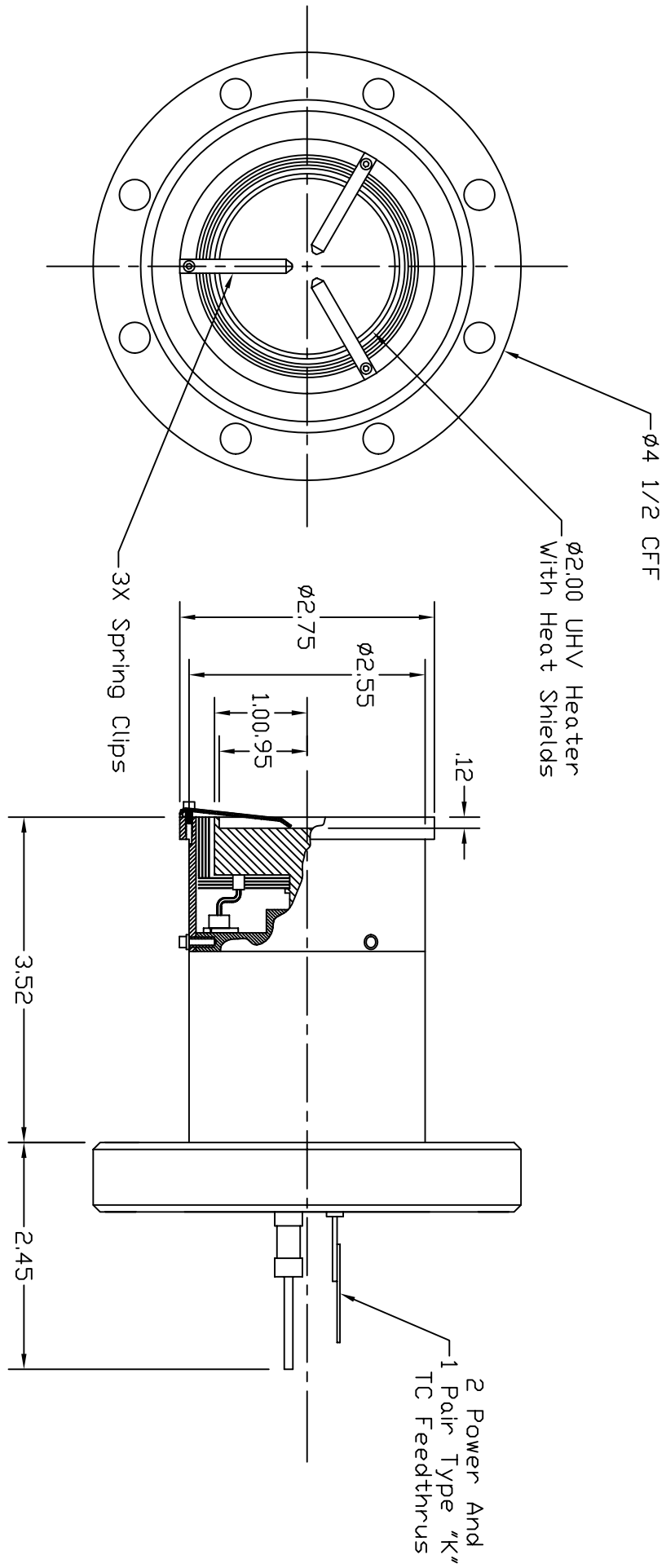


Dash #	Next Assembly
-	-

REVISIONS			
REV	DESCRIPTION	DATE	APPROVED



Notes:  
 1. Estimated operation:  
 10V, 14A @ 1000°C  
 22V, 21A @ 1200°C

This document is the property of HeatWave Labs. Its contents may not be reproduced or distributed without express written permission of HeatWave Labs.

UNLESS OTHERWISE SPECIFIED ALL DIMENSIONS ARE IN INCHES. TOLERANCES ARE: XXXX = ±.005 XX = ±.020 XXXXX = ±.0005 FINISH 63 MICRONDINGERS ANGLES 0 DEGREE ±30 MINUTES EDGES AND CORNERS .005 R MAX
MATERIAL
-
DD NOT SCALE DRAWING

1	103063	Qty.	Part #	103063	Description	Item #
					∅2.0 UHV Heater, 4 1/2 CFF Mounted	-
BY DATE ENGR M.Curtis 2/15/05		HeatWave Labs, Inc. 195 Aviation Way, Suite 100 (831) 722-9081 Watsonville, Ca. 95076 Fax: (831) 722-5491 Website: www.cathode.com				
DRAWN ENGR		∅2.0" UHV Heater Assembly, CFF Mounted				
SIZE	FSCN NO.	DWG. NO.	103059	REV	-	
A						
THIRD ANGLE PROJECTION		SCALE:	0.6x	SHEET:	1/1	