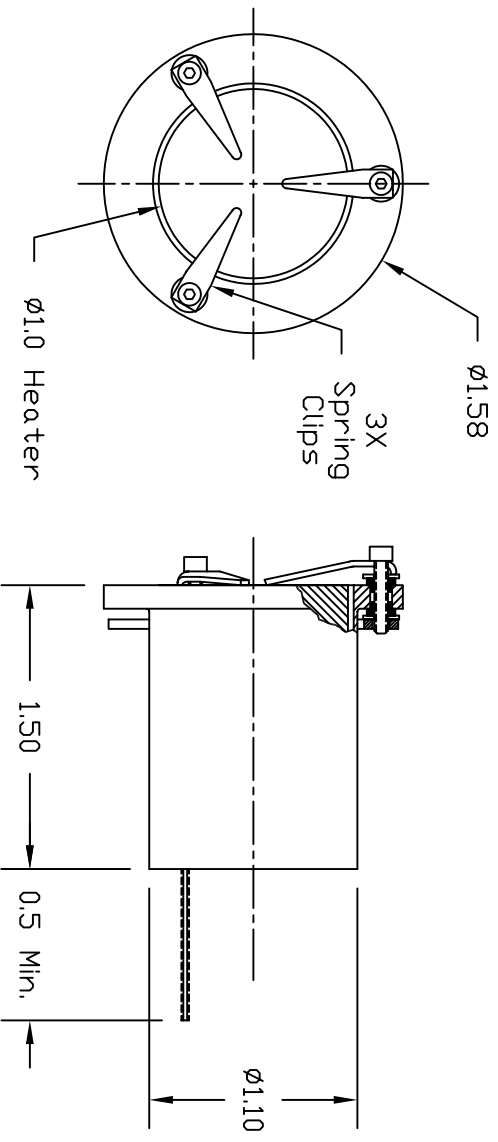


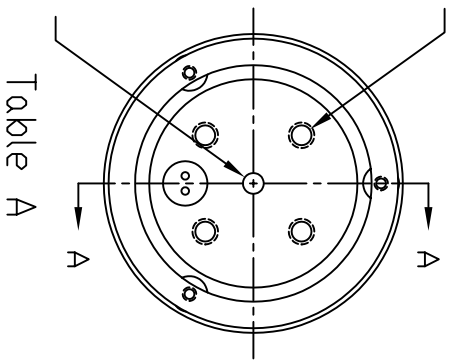
Dash #	Next Assembly
-	-

REVISIONS			
REV	DESCRIPTION	DATE	APPROVED
A	Added dash numbers and dimensions and clamp ring instead of nuts and went to standard spring clips.	8/10/07	MC



4X #6-32 UNC  
 Dn  $\phi$ .720 BHC  
 Mounting Holes

Mounting Hole  
 For Optional  
 TC #101689-01



-04	-03	-02	-01
-----	-----	-----	-----

- Notes:
- Estimated operation:
    - 01, 23V, 10.5A @ 1200°C
    - 02, 9.3V, 9.5A @ 1200°C
    - 03, 23V, 10.5A @ 1200°C
    - 04, 16V, 8.5A @ 1200°C

Qty.	Qty.	Qty.	Qty.
1	1	1	1
-	-	-	-
-	-	-	-
-	-	-	-
Qty.	Qty.	Qty.	Qty.

Dash #	Filament	Atmosphere	Htr. Const.
-01	Enclosed	O2/UHV	Ceramic
-02	Exposed	O2/UHV	Ceramic/Metal
-03	Enclosed	O2	Metal
-04	Enclosed	UHV	Metal

Qty.	Part #	Description	Item #
1	102566-04	$\phi$ 1.0 Heater Assembly	-
1	102566-03	$\phi$ 1.0 Heater Assembly	-
1	102566-02	$\phi$ 1.0 Heater Assembly	-
1	102566-01	$\phi$ 1.0 Heater Assembly	-

**HeatWave Labs, Inc.**  
 195 Aviation Way, Suite 100 (831) 722-9081  
 Watsonville, Ca. 95076 Fax: (831) 722-5491  
 Website: www.cathode.com

BY	DATE
ENGR	DATE
M.Curtis	5/3/04

$\phi$ 1.0 Heater Assembly  
 w/Isolated Sample Holding Clips

This document is the property of HeatWave Labs. Its contents may not be reproduced or distributed without express written permission of HeatWave Labs.

UNLESS OTHERWISE SPECIFIED ALL DIMENSIONS ARE IN INCHES.  
 TOLERANCES ARE:  
 .XXXX =  $\pm$ .005 XX =  $\pm$ .020  
 .XXXXX =  $\pm$ .0005  
 FINISH 63 MICRONDICHES  
 ANGLES 0 DEGREE  $\pm$ 30 MINUTES  
 EDGES AND CORNERS .005 R MAX

DD NOT SCALE DRAWING

SIZE	FSCN ND.	DWG. ND.	REV
A		102559	A
THIRD ANGLE PROJECTION			SHEET: 1/1