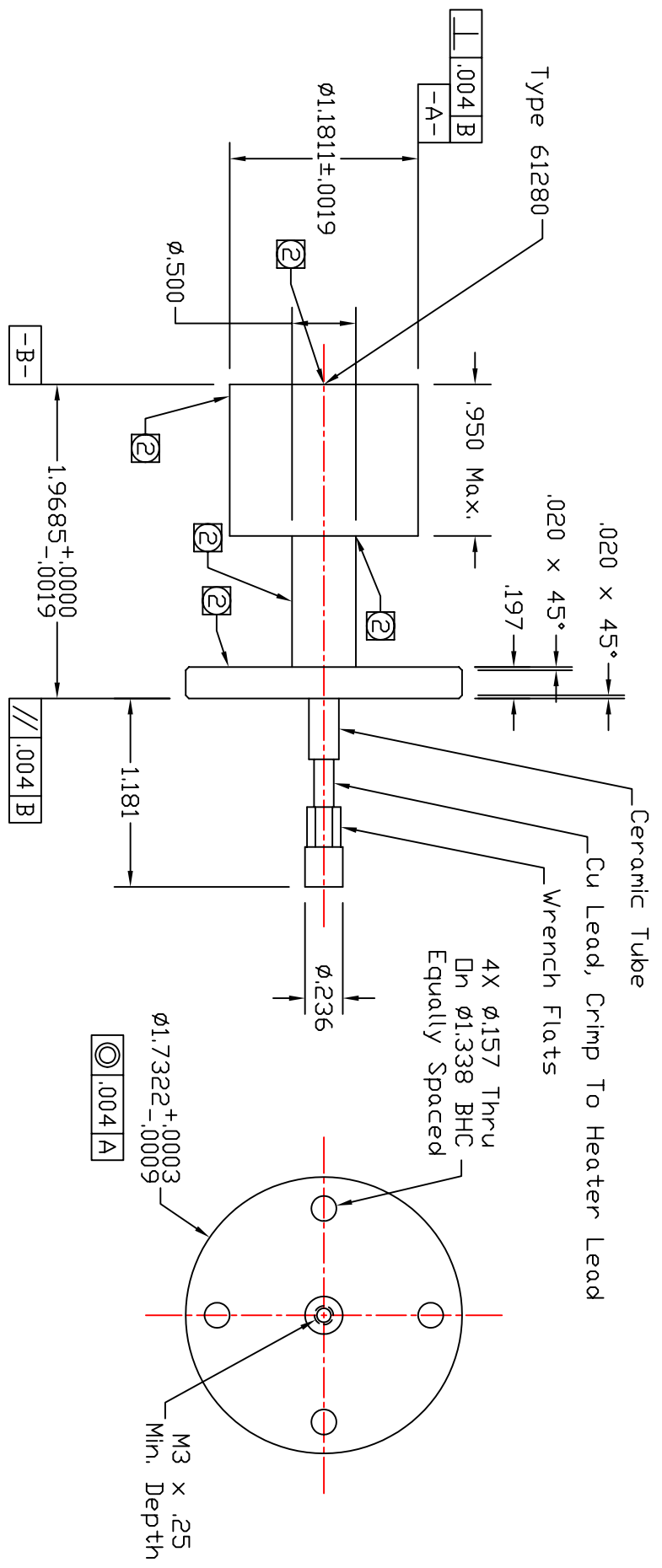


Dash #	Next Assembly
-	-

REV	DESCRIPTION	DATE	APPROVED



Notes:

- One lead of cathode to be grounded to the heater can.
- V, I, T data to be taken and recorded at these five locations at 900° , 1000° and $1100^\circ C$. Plot to be supplied with shipment.
- Materials to be used in assembly will include Molybdenum, Tungsten, Mo/Re, Mo/Ru, Alumina and Copper.

This document is the property of HeatWave Labs. Its contents may not be reproduced or distributed without express written permission of HeatWave Labs.

UNLESS OTHERWISE SPECIFIED ALL DIMENSIONS ARE IN INCHES.
 TOLERANCES ARE:
 XXXX = $\pm .005$ XX = $\pm .020$
 FINISH 63 MICROINCHES
 ANGLES 0 DEGREE ± 30 MINUTES
 EDGES AND CORNERS .005 R MAX

MATERIAL -

DD NOT SCALE DRAWING

Qty.	Part #	Description	Item #
1	102381	Cathode Assembly	-

HeatWave Labs, Inc.
 195 Aviation Way, Suite 100 (831) 722-9081
 Watsonville, Ca. 95076 Fax: (831) 722-5491
 Website: www.cathode.com

Cathode Assembly

DRAWN	BY	DATE
ENGR	McCurteis	10/17/03

SIZE A
 Code Code 1VAN4
 DWG. NO. 102379
 SCALE: 1x
 SHEET: 1/1