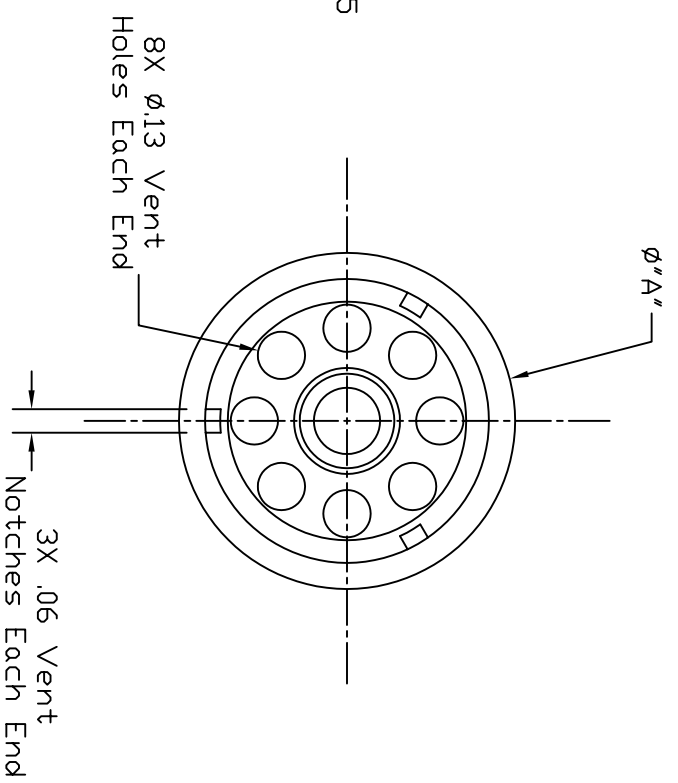
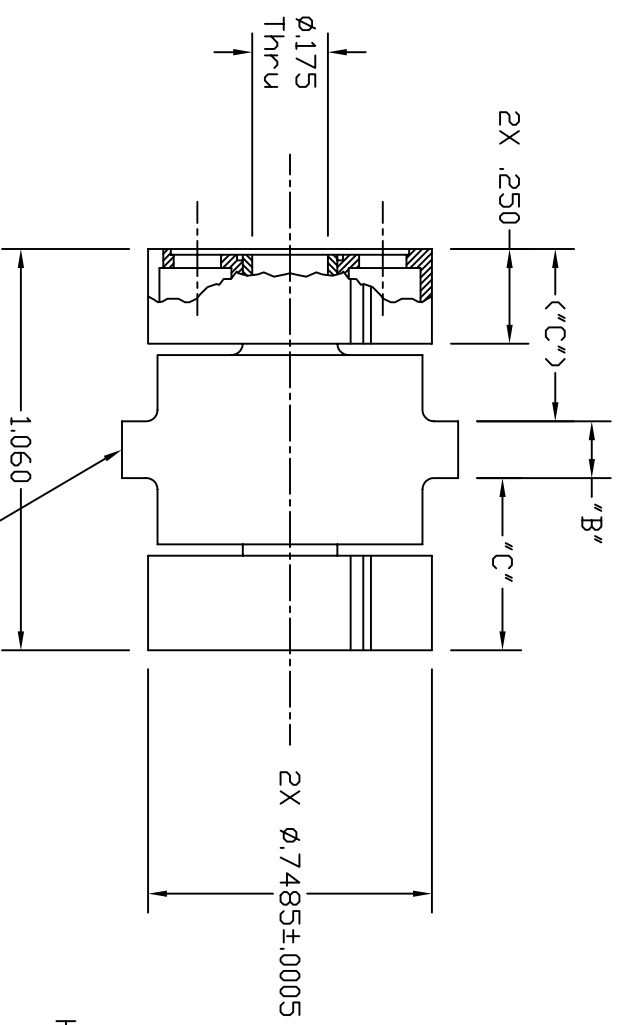


Dash #	Next Assembly
-	-

Table A

Dash #	φ "A"	"B"	"C"
-01	.888	.150	.455
-02	.968	.150	.455
-03	.888	.315	.373
-04	.980	.150	.455

REVISIONS			
REV	DESCRIPTION	DATE	APPROVED
A	Added -03.	4/12/04	MC
B	Added thru hole.	4/22/04	MC
C	Added -04 and estimated operation.	5/30/06	MC



Notes:
 1. Estimated operation:
 10.6V, 8.2A @ 1000°C

This document is the property of HeatWave Labs. Its contents may not be reproduced or distributed without express written permission of HeatWave Labs.

Type 61280

UNLESS OTHERWISE SPECIFIED
 ALL DIMENSIONS ARE IN INCHES.
 TOLERANCES ARE:
 .XXXX = ±.005 .XX = ±.020
 .XXX = ±.005
 FINISH 63 MICROINCHES
 ANGLES 0 DEGREE ±30 MINUTES
 EDGES AND CORNERS .065 R MAX

MATERIAL
 -

DD NOT SCALE DRAWING

Qty.	Part #	Description	Item #
1	102339	Magnetron Assembly	-

BY DATE

HeatWave Labs, Inc.
 195 Aviation Way, Suite 100 (831) 722-9081
 Watsonville, Ca. 95076 Fax: (831) 722-5491
 Website: www.ca.thode.com

Magnetron Assembly

SIZE Code Code DWG. NO. REV
 A 1VAN4 102331 C

THIRD ANGLE PROJECTION SCALE: 2X SHEET: 1/1