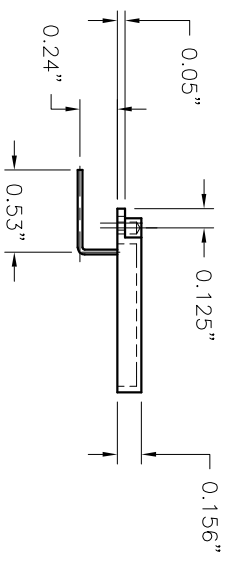
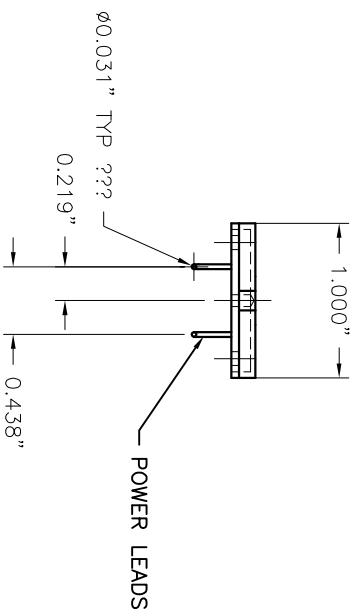
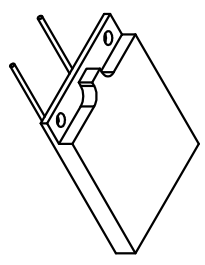
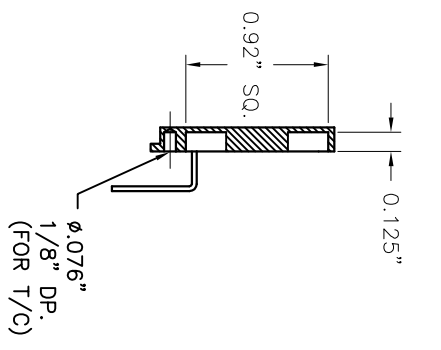
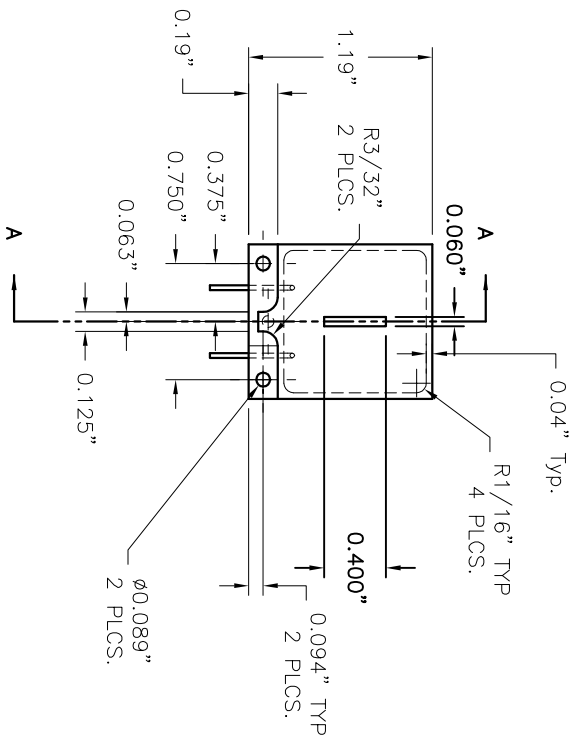


Dash #	Next Assembly
-	-

REVISIONS			
REV	DESCRIPTION	DATE	APPROVED
A	TC hole depth was 3/16, now .125.	10/11/02	MC



A/R	Part #	Description	Item #
1	101978	Potting Mix, Alumina Filament	2
1	101974	Heater Can, Mo	1

- Notes:
1. Maximum operating temperature to be 1200°C @ 7A maximum.
 2. Leads to be formed as shown.
 3. Lead diameters to be $\phi.031$ maximum.

This document is the property of HeatWave Labs. Its contents may not be reproduced or distributed without express written permission of HeatWave Labs.

UNLESS OTHERWISE SPECIFIED ALL DIMENSIONS ARE IN INCHES.
 TOLERANCES ARE:
 .XXX = $\pm.005$.XX = $\pm.020$
 .XXXX = $\pm.0005$
 FINISH 63 MICRONS/CHES
 ANGLES 0 DEGREE $\pm.50$ MINUTES
 EDGES AND CORNERS .005 R MAX

MATERIAL
 Noted
 DO NOT SCALE DRAWING

HeatWave Labs, Inc.
 195 Aviation Way, Suite 100 (831) 722-9081
 Watsonville, Ca. 95076 Fax: (831) 722-5491
 Website: www.cathode.com

BY	DATE	UHV Heater	SIZE	Cage Code	DWG. NO.	REV
ENGR	9/27/02		A	1YAN4	101973	A
was SK0922702			SCALE: N/A	SHEET: 1/1		