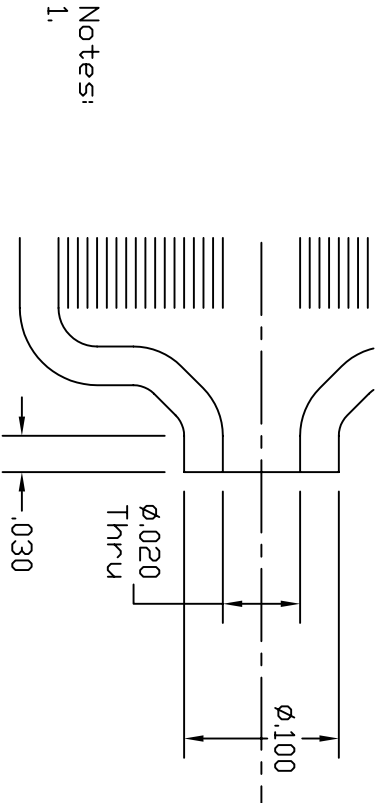
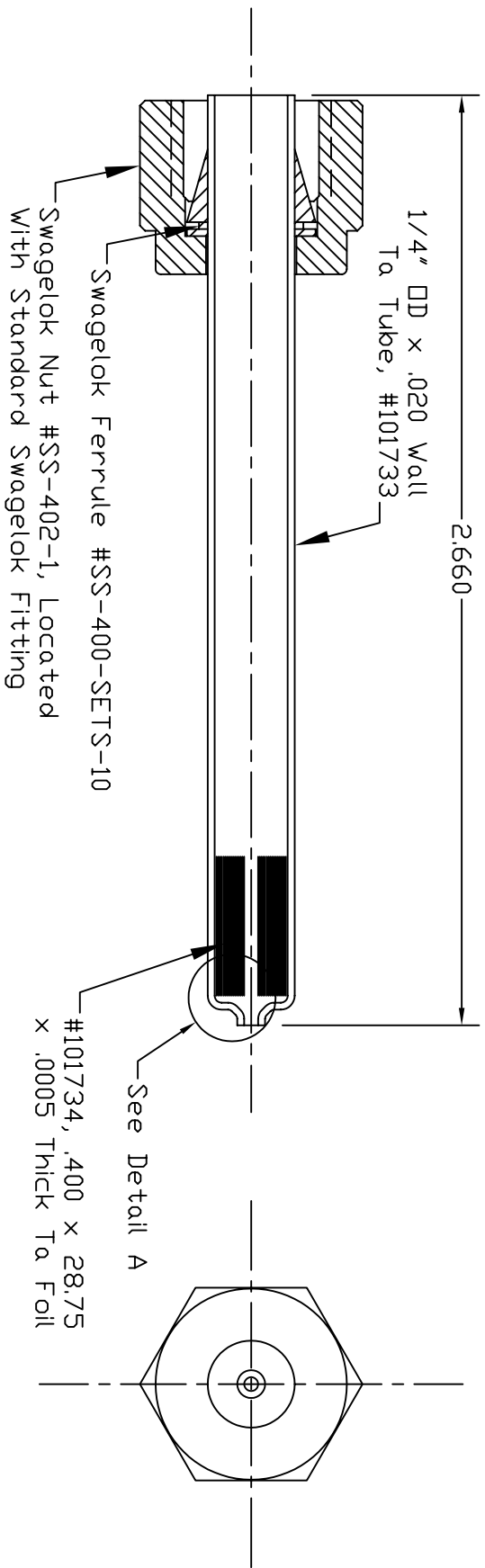


REVISIONS			DATE	APPROVED
REV	DESCRIPTION			
A	φ.100 was .088, 2.660 was 2.665 as per customer request.		8/8/01	MC



Detail A  
Scale: 10X

This document is the property of HeatWave Labs. Its contents may not be reproduced or distributed without express written permission of HeatWave Labs.

UNLESS OTHERWISE SPECIFIED ALL DIMENSIONS ARE IN INCHES. TOLERANCES ARE: XXX = ±.005    XX = ±.020 XXXX = ±.0005 FINISH 63 MICRONS ANGLES 0 DEGREE ±30 MINUTES EDGES AND CORNERS .005 R MAX	
MATERIAL	Ta
DID NOT SCALE DRAWING	

**HeatWave Labs, Inc.**  
 195 Aviation Way, Suite 100 (831) 722-9081  
 Watsonville, Ca. 95076 Fax: (831) 722-5491  
 Website: www.ca.thode.com

BY	DATE
ENGR M. Curtis	8/3/01

Hollow Cathode  
w/ Swagelok Fitting

SIZE	FSCN NO.	DWG. NO.	REV
A		101732	A

THIRD ANGLE PROJECTION SCALE: 2x SHEET: 1/1