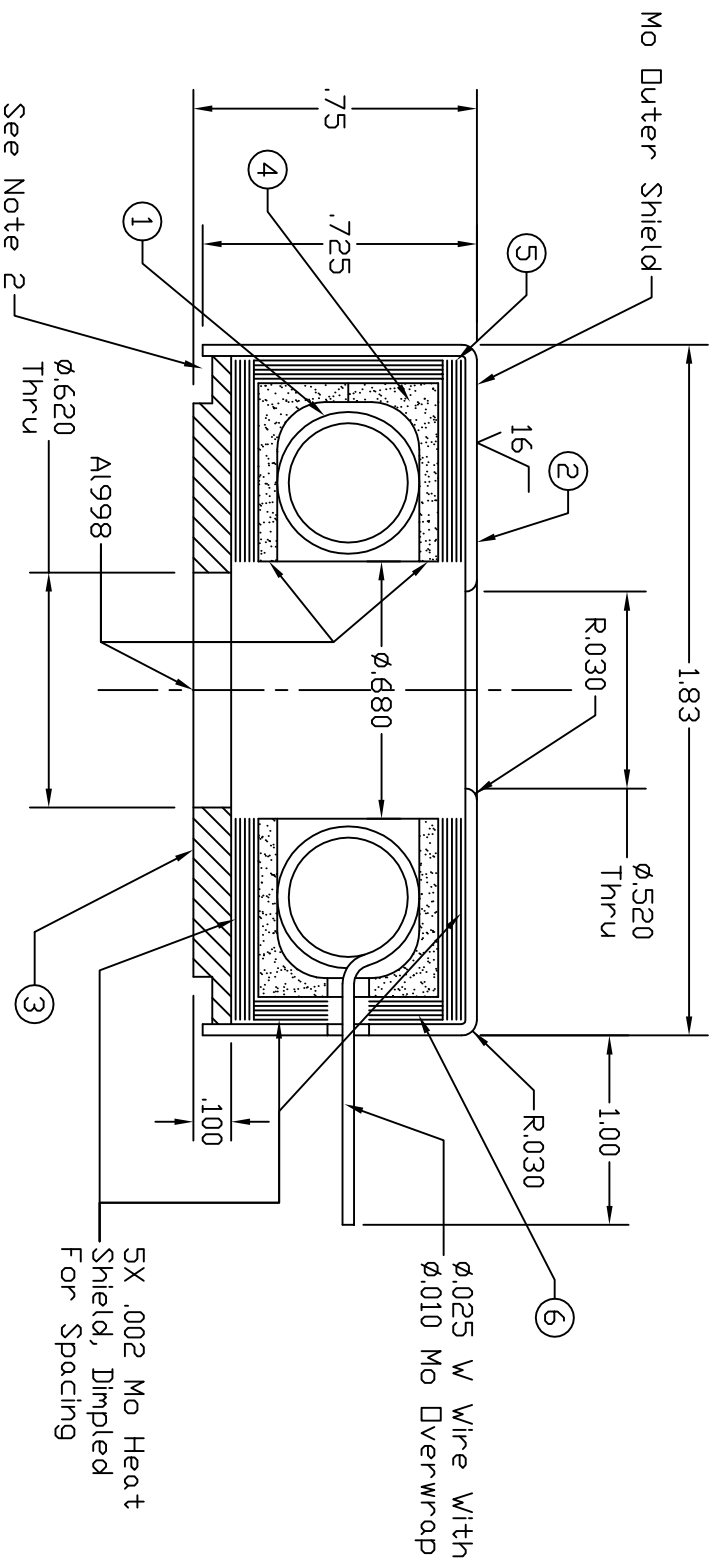


REVISIONS			
REV	DESCRIPTION	DATE	APPROVED
1	Added BOM and notes.	3/21/12	MC



- Notes:
- Estimated operation: 32.3V, 19A @ 1700°C.
  - In this area a  $\frac{1}{2}$ -.010/.015 HT Moly wire is to be used to secure the assembly. A "C" clip shape utilizing the holes is a suggested form.
  - Both leads must have a ceramic tube (ASB-250063 x .375) insulating them through the exit of the housing. The leads are to be bent slightly to capture the insulators in place.

This document is the property of HeatWave Labs. Its contents may not be reproduced or distributed without express written permission of HeatWave Labs.

UNLESS OTHERWISE SPECIFIED ALL DIMENSIONS ARE IN INCHES.
TOLERANCES ARE: XXXX = ±.005 XXX = ±.005 XX = ±.020 FINISH 63 MICROINCHES ANGLES 0 DEGREE ±30 MINUTES EDGES AND CORNERS .005 R MAX
MATERIAL Noted
DD NOT SCALE DRAWING

Qty.	Part #	Description	Item #
1	101531	Radial Heat Shield	6
10	101530	Upper & Lower Heat Shield	5
2	101529	Heater Case	4
1	101528	Base	3
1	101527	Outer Shield	2
1	101526	Filament	1

**HeatWave Labs, Inc.**  
 195 Aviation Way Phone: (831) 722-9081  
 Watsonville, Ca. 95076 Fax: (831) 722-5491  
 Website: www.cathode.com

BY	DATE	1700°C FURNACE	
ENGR	M.Curtis	5/15/00	
DRAWN			
Sim: 102024			
SIZE	FSCN NO.	DWG. NO.	REV
A		101525	1
THIRD ANGLE PROJECTION	SCALE: 1.5X		SHEET: 1/1