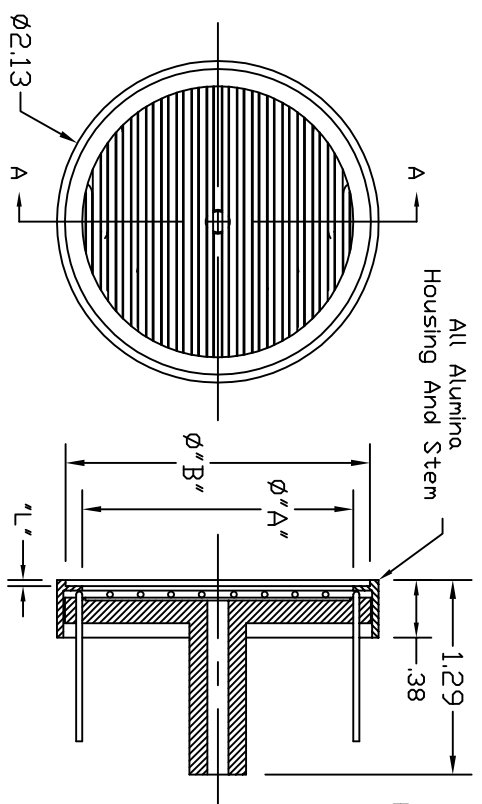


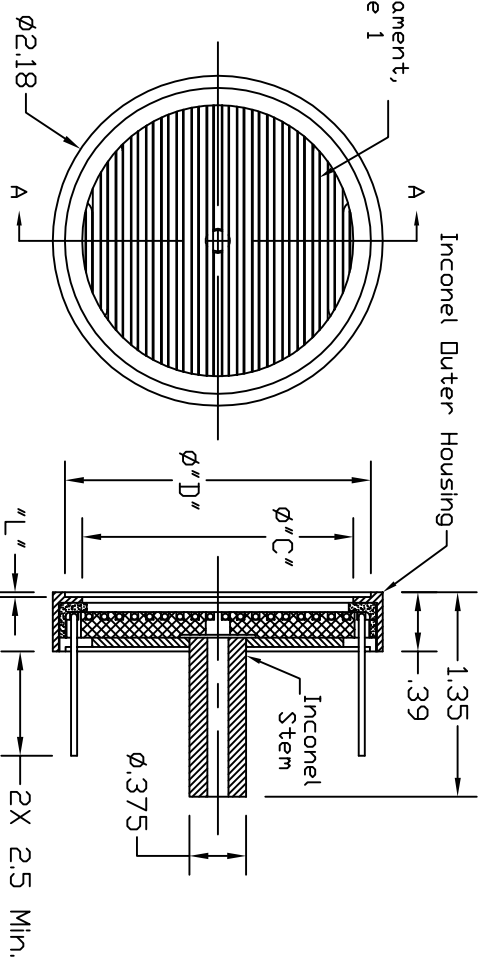
Dash #	Next Assembly
-	-

REVISIONS			
REV	DESCRIPTION	DATE	APPROVED
A	Changed design to have metal housing and added dash numbers for UHV. 6/2/06	10/12/06	MC
B	Added dash numbers and page 2 to include all Alumina construction.	11/5/12	MC
B1	Modified views to clarify differences.		MC



View A-A

-01 Thru -04, -01 Shown



View A-A

-11 Thru -14, 11 Shown

Dash #	ϕA "	ϕB "	"L"	Filament	Atmos.
-01	$\phi 1.790$	$\phi 2.020$.040	Exposed	O2/UHV
-02	$\phi 0.000$	$\phi 2.020$.040	Enclosed	O2/UHV
-03	$\phi 0.000$	$\phi 0.000$.000	Enclosed	O2/UHV
-04	$\phi 1.790$	$\phi 2.020$.040	Exposed	UHV

Dash #	ϕC "	ϕD "	"L"	Filament	Atmos.
-11	$\phi 1.790$	$\phi 2.020$.030	Exposed	O2/UHV
-12	$\phi 0.000$	$\phi 2.020$.030	Enclosed	O2/UHV
-13	$\phi 0.000$	$\phi 0.000$.000	Enclosed	O2/UHV
-14	$\phi 1.790$	$\phi 2.020$.030	Exposed	UHV

Table A

Notes:
 1. Models -04 and -14 have Moly filament.

This document is the property of HeatWave Labs. Its contents may not be reproduced or distributed without express written permission of HeatWave Labs.

UNLESS OTHERWISE SPECIFIED ALL DIMENSIONS ARE IN INCHES.
 TOLERANCES ARE:
 .XXX = $\pm .005$ XX = $\pm .020$
 .XXXX = $\pm .0005$
 FINISH 63 MICRONS
 ANGLES 0 DEGREE ± 30 MINUTES
 EDGES AND CORNERS .005 R MAX

MATERIAL

DD NOT SCALE DRAWING

HeatWave Labs, Inc.
 195 Aviation Way, Suite 100 (831) 722-9081
 Watsonville, Ca. 95076 Fax: (831) 722-5491
 Website: www.cathode.com

BY	DATE
ENGR M.Curtis	6/24/04

$\phi 2.0$ O2/UHV Heater

SIZE	Cage Code	DWG. NO.	REV
A	1YAN4	101511	B1
SCALE: 08X			SHEET: 1/2