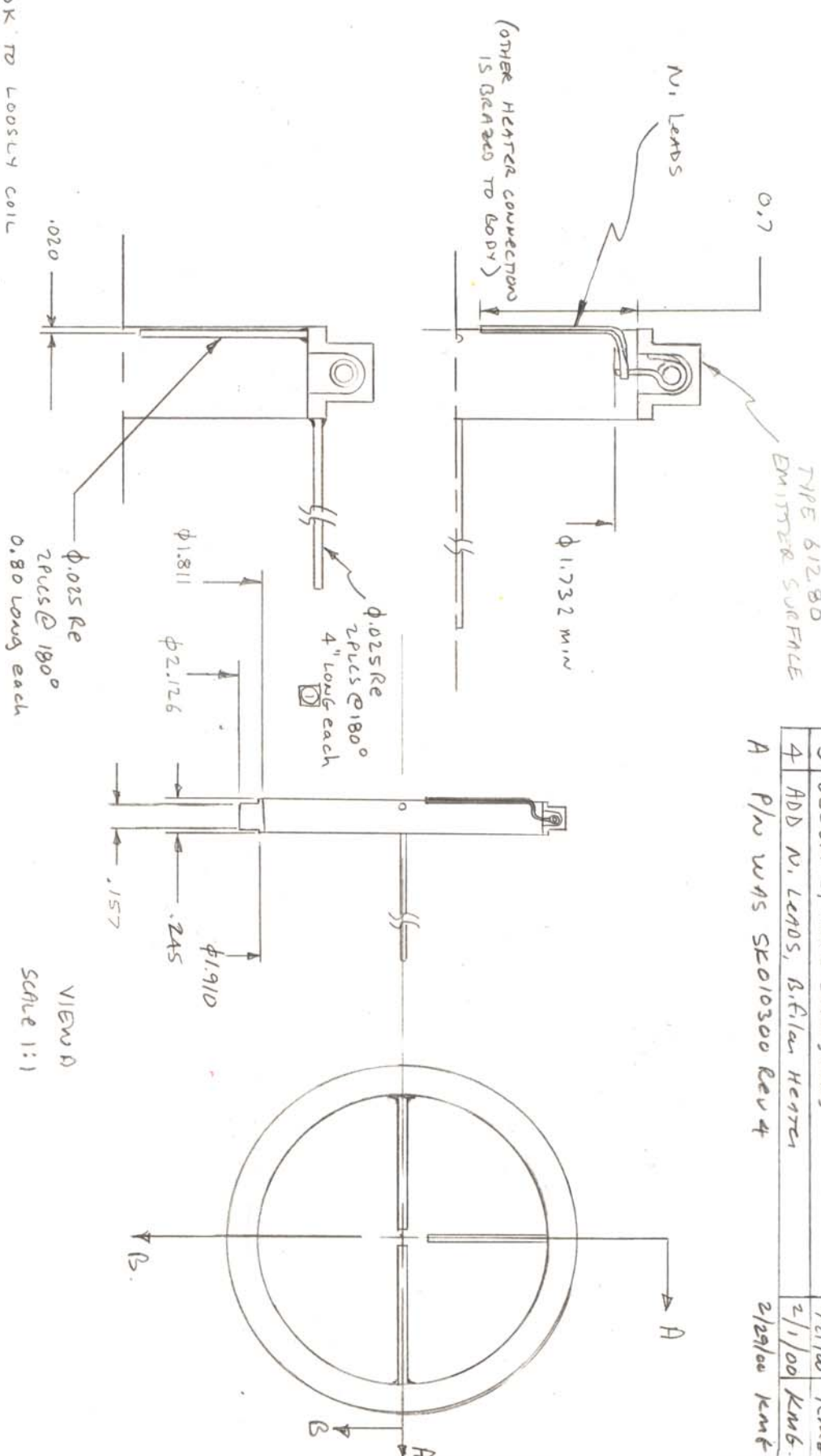


REVISIONS			
REV	DESCRIPTION	DATE	APPROVED
3	DEL OPT 2, MOVE LEADS, PINS	1/21/00	KMG
4	ADD N.I. LEADS, B.F.I.LAN HEATER	2/1/00	KMG.
A P/W WWS SK010300 Rev 4		2/29/00	KMG



- 1. OK TO LOOSELY COIL 4" LEADS FOR PACKING.
 - 2. HEATER IS B.F.I.LAN WIND.
 - 3. BAKE TEMPERATURE TYPICAL:
 - 17V, 10A @ 1000 ϕ
 - 19V, 10.6A @ 1050 ϕ , $R_c = .299 \Omega$
- This document is the property of HeatWave. Its contents may not be reproduced or distributed without express written permission of HeatWave.

UNLESS OTHERWISE SPECIFIED
 ALL DIMENSIONS ARE IN INCHES.
 TOLERANCES ARE:
 XXX = $\pm .005$ XX = $\pm .020$
 XXXX = $\pm .0005$
 FINISH 63 MICROINCHES
 ANGLES 0 DEGREE ± 30 MINUTES
 EDGES AND CORNERS .005 R MAX

BY		DATE	
ENGR	KWTHRE	1/3/00	
WWS SK010300 Rev 4			

HeatWave
 310 Emerald City Way, Watsonville, CA 95076
 Phone: 831-722-9081 Fax: (831) 722-5491

CATHODE RING ASSEMBLY

SIZE	FSCN. NO.	DWG. NO.	REV
A		1506	A

THIRD ANGLE PROJECTION

DO NOT SCALE DRAWING