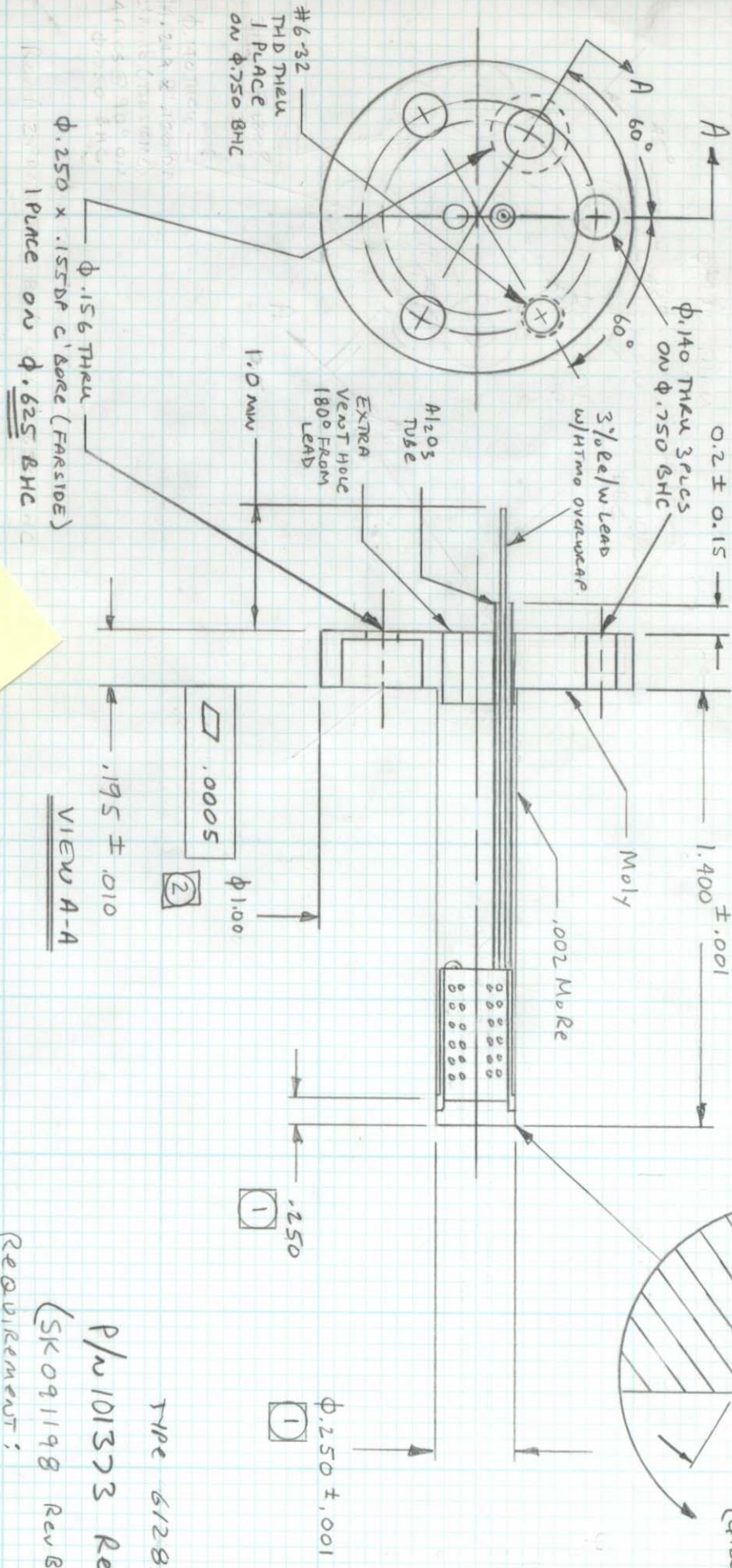


NOTE:

1. $\phi .250 \pm .001$ APPLIES FOR .250 LENGTH.
2. REMAINDER OF LENGTH CAN BE $\pm .005$
3. .0005 \square APPLIES TO AREA $\phi .50$ ONLY
3. HEATER MUST ALLOW CONTINUOUS OPERATION AT 17 WATTS INERT.



VIEW A-A

DATE	REV	DESCRIPTION
10/12/98	R	ADD .015 X 30°, ±.005 WASH ±.010
10/23/98	C	.195 WASH .175", REBO BASE HOLES
12/6/99	D	ADD NOTE 3, REV NOTE 1, DELETE -02 & $\phi .080$ HOLE

HeatWave Labs, Inc.
 195 Aviation Way
 Suite 100
 Watsonville, CA 95076-2069

REQUIREMENT:

3-01 NO $\phi .080$ HOLE IN EMITTER
 (-02 YES $\phi .080$ HOLE IN EMITTER)
 K. GUNTHER
 HEATERIVE
 9/11/98

P/N 101373 Rev D
 (SK 091198 Rev B)

TYPE 61280

