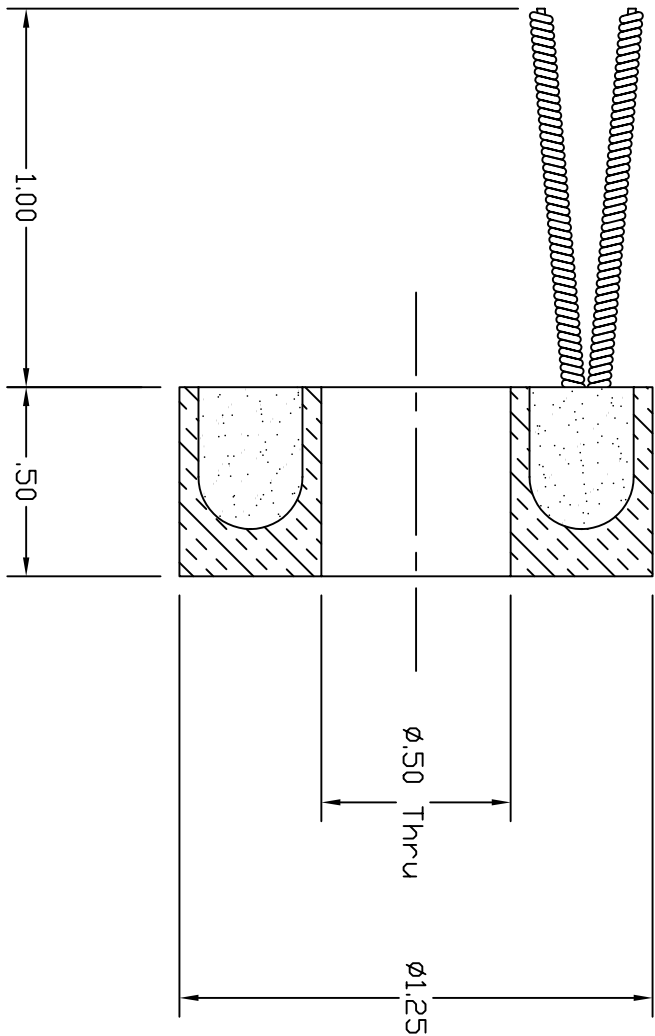


|        |               |
|--------|---------------|
| Dash # | Next Assembly |
| -      | -             |

| REVISIONS |                   |        |          |
|-----------|-------------------|--------|----------|
| REV       | DESCRIPTION       | DATE   | APPROVED |
| A         | Added dwg 102626. | 6/7/04 | MC       |



Notes:  
 1. Heater rated to 1000°C in oxidizing atmosphere. Estimated operation:  
 18V, 6A @ 800°C  
 27V, 9A @ 1000°C  
 34V, 11A @ 1200°C

This document is the property of HeatWave Labs. Its contents may not be reproduced or distributed without express written permission of HeatWave Labs.

UNLESS OTHERWISE SPECIFIED  
 ALL DIMENSIONS ARE IN INCHES.  
 TOLERANCES ARE:  
 .XXX = ±.005    .XX = ±.020  
 .XXXX = ±.0005  
 FINISH 63 MICRONDINGERS  
 ANGLES 0 DEGREE ±30 MINUTES  
 EDGES AND CORNERS .005 R MAX

MATERIAL  
 -

DO NOT SCALE DRAWING

| Qty. | Part # | Description          | Item # |
|------|--------|----------------------|--------|
| 1    | 102626 | Ø1.25 Stub Ø2 Heater | -      |

BY DATE

HeatWave Labs, Inc.  
 195 Aviation Way, Suite 100 (831) 722-9081  
 Watsonville, Ca. 95076 Fax: (831) 722-5491  
 Website: www.ca.thode.com

DRAWN ENGR M.Curtis 1/7/98

SIZE A Coge Code 1VAN4 DWG. NO. 101316 REV A

Ø1.25 Stub Ø2 Heater

THIRD ANGLE PROJECTION SCALE: 2x SHEET: 1/1