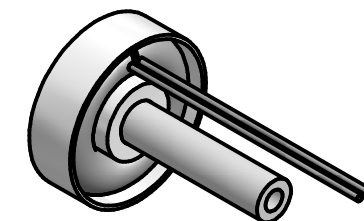
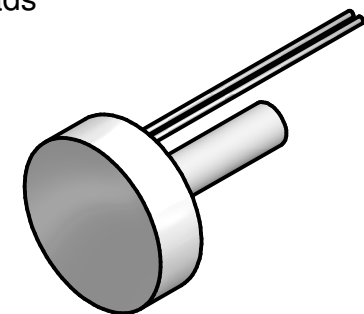
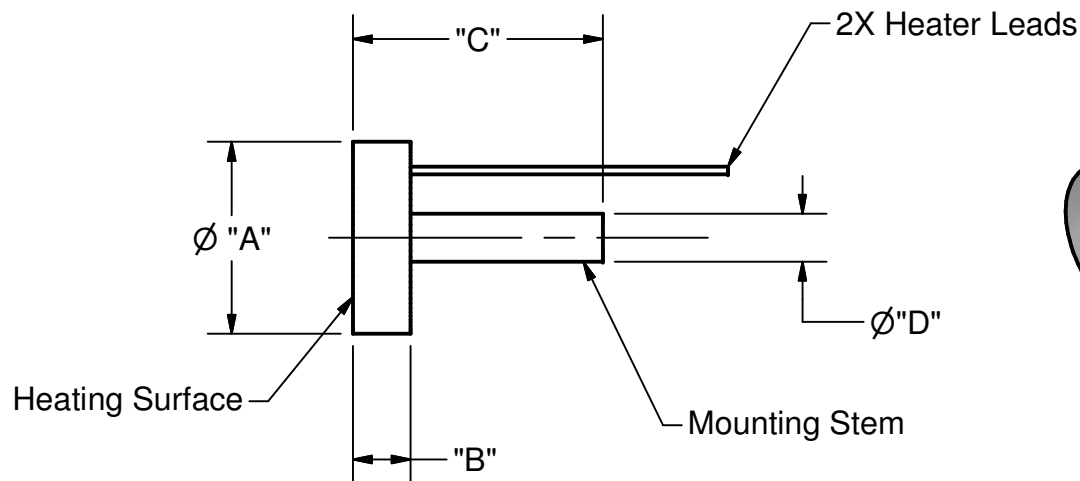
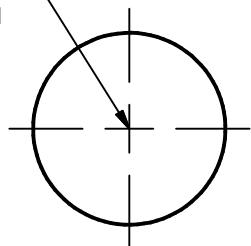


REVISION HISTORY

REV	DESCRIPTION	DATE	APPROVED
K	Refer to MD, Rev. K8 for previous Rev. History	2/4/2013	MC
K	Transitioned to Invetor. Added -57	5/3/2013	BP

Ø "E" Optional Hole Thru



Next Assy.	-
------------	---

Notes:

1. Strain relief between heater posts and customer power connection is recommended.

This document is the property of HeatWave Labs. Its contents may not be reproduced without express written permission of HeatWave Labs.

DRAWN bperryman	5/3/2013
CHECKED	
QA	
MFG	
APPROVED	
Material:	
-	

**HeatWave Labs, Inc.**  
 195 Aviation Way, Suite 100 P: 831-722-9081  
 Watsonville, CA 95076 F: 831-722-5491  
 www.cathode.com

Substrate Heaters

SIZE A	Cage Code: 1YAN4	DWG NO 101275	REV K
SCALE 1:1		SHEET 1 OF 3	



TABLE

Dash#	"A"	"B"	"C"	"D"	"E"	TC	Components	Op. Atm., Mat.
-27	1.00	.30	1.30	.250	0.0	No	102625-01	O2/UHV, Ceramic
-28	0.50	.25	0.55	.091	0.0	No	102624	O2/UHV, Ceramic
-29	0.32	.14	0.44	.091	0.0	No	102273-01	O2/UHV, Ceramic
-30	0.75	.25	0.75	.190	0.0	No	101864-01	O2, Ceramic
-33	2.18	.39	1.35	.375	0.0	No	101511-14	UHV, Metal
-34	2.18	.39	1.35	.375	0.0	No	101511-12	O2/UHV, Metal
-35	3.00	.40	1.50	.375	0.0	No	101844-02	UHV, Metal
-36	3.00	.40	1.50	.375	0.0	No	101844-03	O2/UHV, Metal
-37	1.00	.30	1.30	.250	0.0	No	102582	O2/UHV, BeO
-38	1.00	.30	1.30	.250	0.25	No	102625-02	O2/UHV, Ceramic
-39	0.80	.30	1.05	.250	0.0	No	104080	UHV, Metal
-40	1.00	.30	1.30	.250	0.0	No	102746-01	O2/UHV, Ceramic
-41	1.00	.32	0.72	.250	0.0	No	102746-02	O2/UHV, Ceramic
-42	3.25	.50	1.50	.375	* .14	No	104267-01	O2/UHV, C & M
-43	3.25	.50	1.50	.375	* .14	No	104267-02	UHV, C & M
-44	1.00	.30	1.30	.250	0.0	No	104322-01	O2/UHV, Metal
-45	0.50	.25	0.55	.091	0.0	No	104793	O2/UHV, MEtal
-46	1.00	.30	0.77	.250	0.0	No	104322-04	O2/UHV, Metal
-47	1.00	.30	0.77	.250	0.0	No	102625-03	O2/UHV, Ceramic
*-48	1.00	.30	0.77	.250	0.0	No	104322-05	O2/UHV, Metal
-49	0.75	.30	1.00	.250	0.0	No	107953-01	UHV, Metal
** -50	0.50	.25	0.55	.091	0.0	No	107957	O2/UHV, Ceramic

\* The -48 heater is a High Power version. It has 2x the wire of the standard heater.

\*\* The -50 heater has radial exiting leads.

This document is the property of HeatWave Labs. Its contents may not be reproduced without express written permission of HeatWave Labs.

DRAWN bperryman	5/3/2013
CHECKED	
QA	
MFG	
APPROVED	

*HeatWave Labs, Inc.* 195 Aviation Way, Suite 100 P: 831-722-9081  
 Watsonville, CA 95076 F: 831-722-5491  
 www.cathode.com

**Substrate Heaters**

SIZE A	Cage Code: 1YAN4	DWG NO 101275	REV K
SCALE		SHEET 2 OF 3	





TABLE

Dash#	"A"	"B"	"C"	"D"	"E"	TC	Components	Op. Atm., Mat.
-51	0.75	.30	1.00	.250	0.0	No	107953-02	UHV, Ceramic
-52	0.75	.30	1.00	.250	0.0	No	107953-03	O2/UHV, Ceramic
-53	1.00	.30	1.30	.250	0.0	No	102625-04	O2/UHV, Ceramic
-54	1.00	.30	1.30	.250	0.0	Yes	102625-05	O2/UHV, Ceramic
-55	0.32	.14	0.44	.091	0.0	Yes	102273-02	O2/UHV, Ceramic
-56	0.50	.25	0.40	.094	0.0	Yes	107767	O2/UHV, Ceramic
-57	0.32	.14	0.24	.093	0.0	No	105022	O2/UHV, Ceramic

B

B



A

A

DRAWN bperryman	5/3/2013
CHECKED	
QA	
MFG	
APPROVED	

*HeatWave Labs, Inc.* 195 Aviation Way, Suite 100 P: 831-722-9081  
 Watsonville, CA 95076 F: 831-722-5491  
 www.cathode.com

**Substrate Heaters**

SIZE A	Cage Code: 1YAN4	DWG NO 101275	REV K
SCALE		SHEET 3 OF 3	

This document is the property of HeatWave Labs.  
 Its contents may not be reproduced without  
 express written permission of HeatWave Labs.

