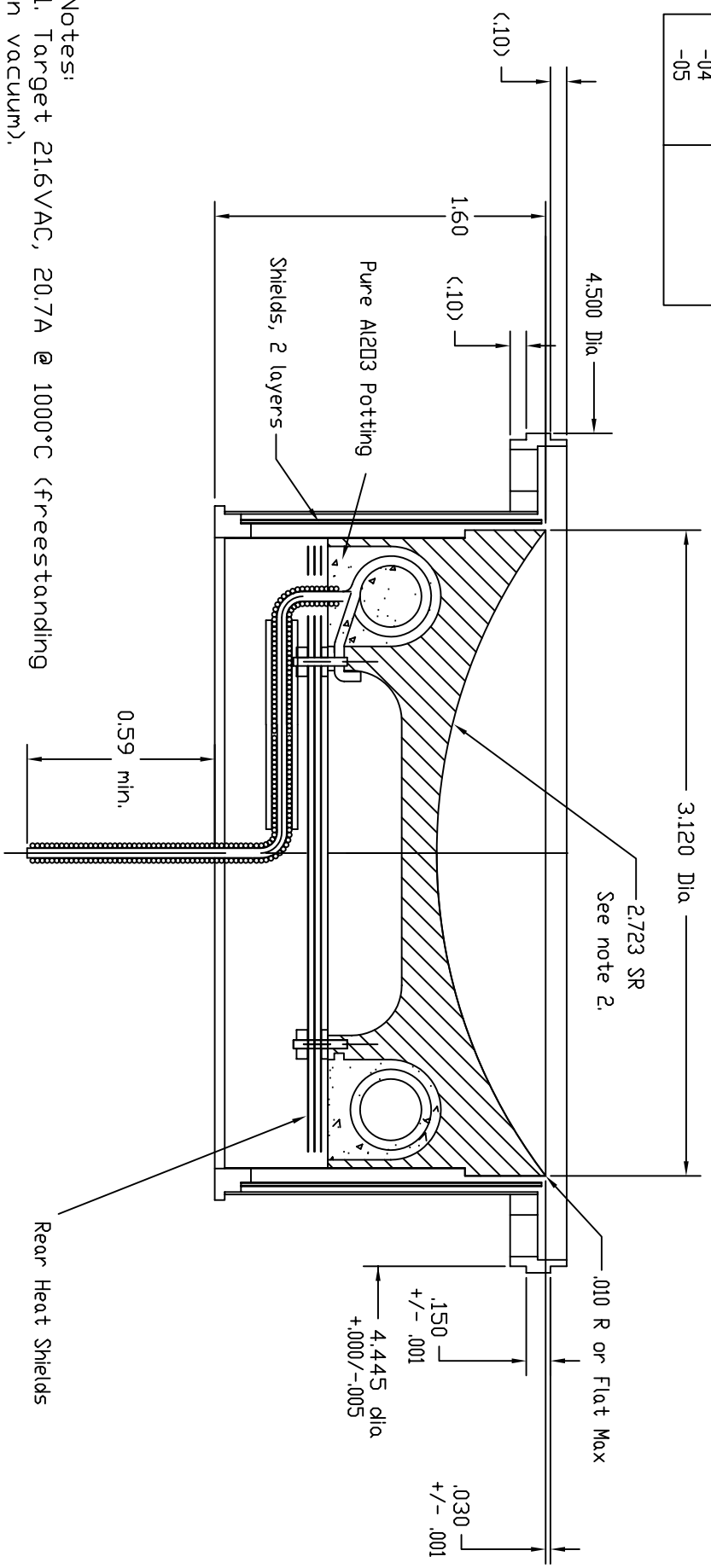


REVISIONS			
REV	DESCRIPTION	DATE	APPROVED
B	New border and added bore data.	5/7/02	MC

Dash No.	Emitter Type
-01	31180
-02	31180 M
-03	31180 X
-04	
-05	



- Notes:
1. Target 21.6VAC, 20.7A @ 1000°C (freestanding in vacuum).
 2. Emitter type per Table A.
 3. "M" coat 4000-6000 angstroms (-02).
 4. Typical "bare" data:

- 15.28V, 16.9A @ 850°C (258W)
- 17.43V, 18.2A @ 900°C (317W)
- 19.51V, 19.5A @ 950°C (380W)
- 21.63V, 20.7A @ 1000°C (447W)
- 23.92V, 21.9A @ 1050°C (523W)

This document is the property of HeatWave Labs. Its contents may not be reproduced or distributed without express written permission of HeatWave Labs.

UNLESS OTHERWISE SPECIFIED ALL DIMENSIONS ARE IN INCHES.	
TOLERANCES ARE: xxx = ±.005 xx = ±.020 xxxx = ±.0005	
FINISH 63 MICROINCHES ANGLES 0 DEGREE ±30 MINUTES EDGES AND CORNERS .005 R MAX	
MATERIAL	Noted
DD NOT SCALE DRAWING	

Qty.	Part #	Description	Item #
		HeatWave Labs, Inc. 195 Aviation Way, Suite 100 (831) 722-9081 Watsonville, Ca. 95076 Fax: (831) 722-5491 Website: www.cathode.com	
		Ø3.12 Cathode/Heater Assy. w/Reentrant Flange	
BY	DATE	SIZE	REV
ENGR	M.Curtis	A	B
	5/7/02	FSCN ND.	
		DWG. ND.	
		101229	
THIRD ANGLE PROJECTION SCALE: 1x			SHEET: B