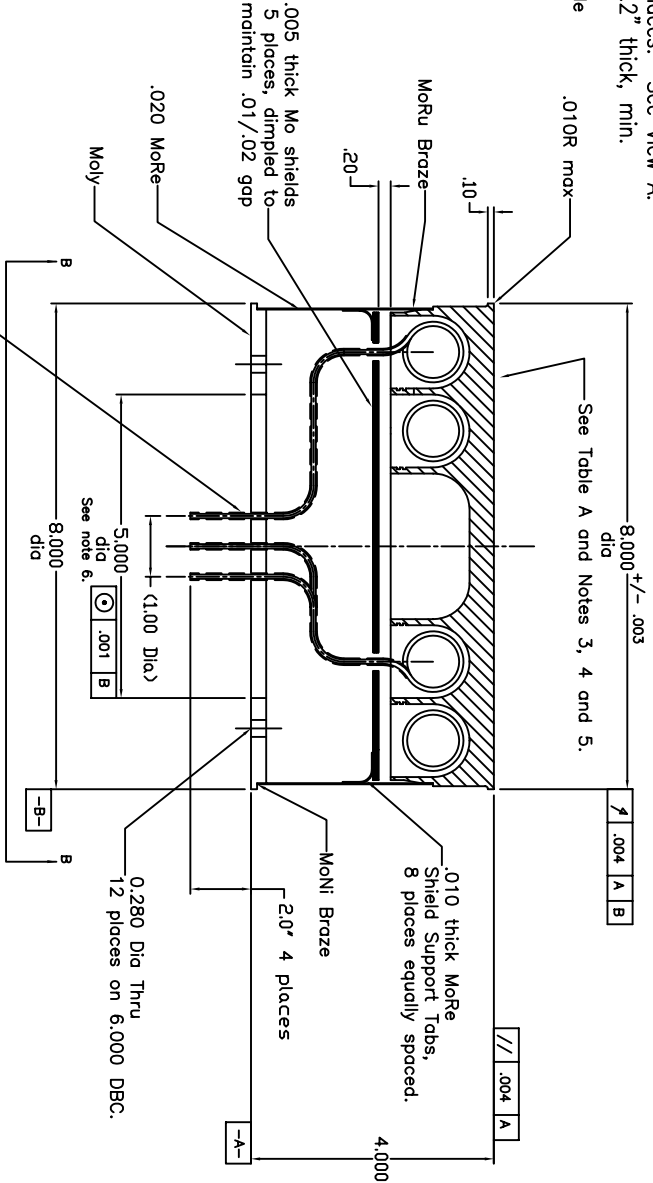
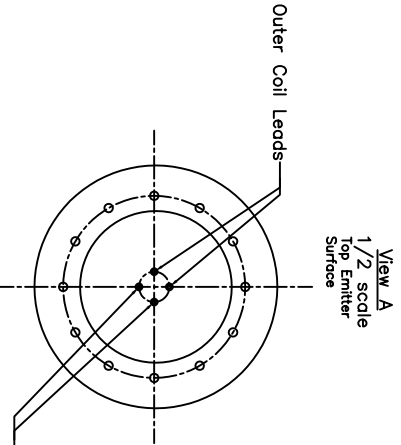
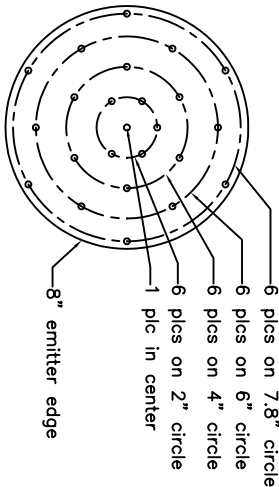


Notes:

- V, I, T Spec TBD.
- Minimum of .040 gap between heater and cavity wall.
- M Coat 4000-6000 Angstroms. (-02)
- Emitter type per Table A.
- Target Imp surface coverage to be >90%. Verify and document imp coverage visually with DI H2O drops staggered 25 places. See View A. 70% min imp weight gain based on volume 8" dia by 0.2" thick, min.
- Actual value = 4.9996.



This document is property of HeatWave. Its contents may not be reproduced or distributed without expresswritten permission of HeatWave.

REVISIONS			
REV	DESCRIPTION	ECD	DATE APPROVED
D	Htr now 2 concentric tori		10/22/98 KMG
E	2.0" 4 places was 1.0		11/20/98 KMG
F	.280 thru was 1/4-20 THD thru		11/30/98 KMG
G	Added geometric tolerances		12/26/98 KMG

Table A		Table B	
Dash No.	Type	Minor ID	Major ID
-01	61282 M	.856	1.000
-02	61282 M	2.800	4.800
-03	61282 X	5.0	6.371

Inner Coil		Outer Coil	
Minor ID	Major ID	Minor ID	Major ID
.856	1.000	.856	1.000
2.800	4.800	2.800	4.800
5.0	6.371	5.0	6.371

UNLESS OTHERWISE SPECIFIED DIMENSIONS ARE IN INCHES	
DECIMALS: 1PL±1 2PL±02	3PL±.005
FRACTION: 1/16	SURFACE: 32
ANG ± 1'	FINISH: 32
MATERIAL: NDTED	

QTY	IDENTIFYING NUMBER	DESCRIPTION	CODE	IDENT ITEM
LIST OF MATERIALS				
REPRODUCTION OF THIS DOCUMENT IS THE PROPERTY OF HEATWAVE. ITS STRICTLY PROHIBITED.				
DIR				
CHK				
APPD	Gunther	6/2/98		
APPD				
DESIGN ACTIVITY APPROVAL		SIZE	FSCM	ND.
CUSTOMER APPROVAL		D		
		SCALE	1/1	
				1186
				SHEET
				DF

HeatWave  
30 Emerald City Way  
Watsonville, CA 95076

HTR-CATH ASSY