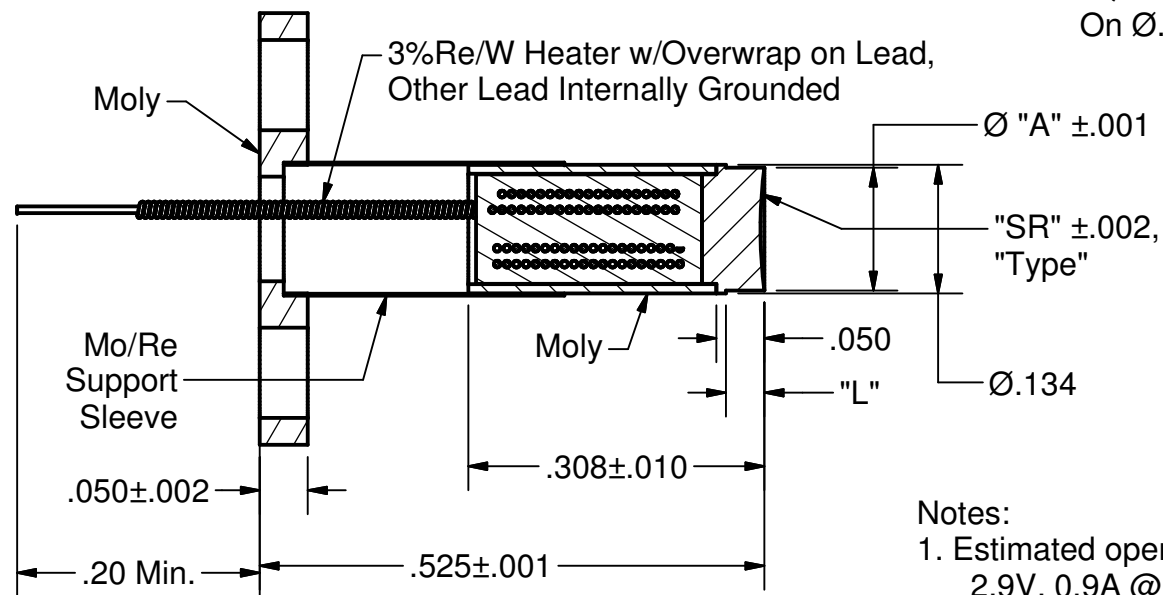


TABLE A				
Dash #	"Type"	"A"	"L"	"SR"
-01	61280	.134	.030	0
-02	-	-	-	-
-03	-	-	-	-
-04	61280M	.134	.030	0
-05	61280	.128	.040	.128

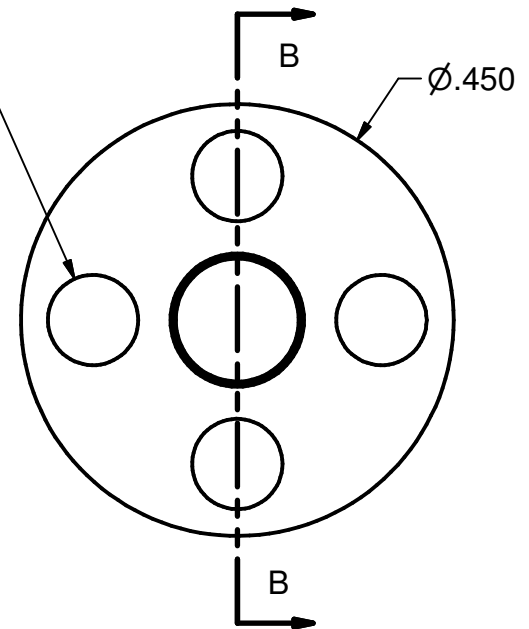
REVISION HISTORY			
REV	DESCRIPTION	DATE	APPROV
A	.050 was (.027), 612 was 311.	6/23/97	KMG
B	Redrawn on Cad.	3/14/99	KMG
B1	Redrawn Inventor, added -05.	8/23/12	MC

B



SECTION B-B  
SCALE 5 : 1

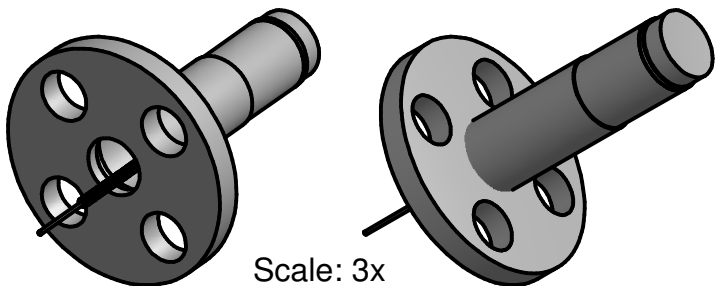
4X Ø.094 THRU  
On Ø.300 BHC



B

- Notes:  
 1. Estimated operation:  
 2.9V, 0.9A @ 900 °C  
 3.7V, 1.0A @ 1000 °C  
 4.7V, 1.1A @ 1100 °C  
 5.8V, 1.3A @ 1200 °C

A



Scale: 3x

This document is the property of HeatWave Labs.  
 Its contents may not be reproduced without  
 express written permission of HeatWave Labs.

DRAWN mcurtis	8/23/2012
CHECKED	
QA	
MFG	
APPROVED	
Material:	

<i>HeatWave Labs, Inc.</i>		195 Aviation Way, Suite 100 P: 831-722-9081 Watsonville, CA 95076 F: 831-722-5491 www.cathode.com	
STD 134 Cathode with Base			
SIZE A	Cage Code: 1YAN4	DWG NO 101157	REV B1
SCALE 5x			SHEET 1 OF 1

A

