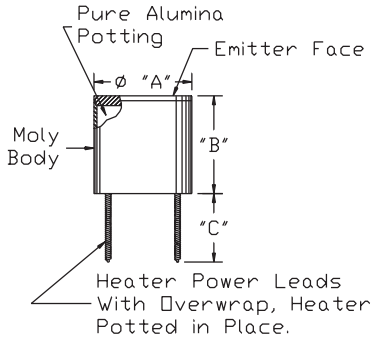
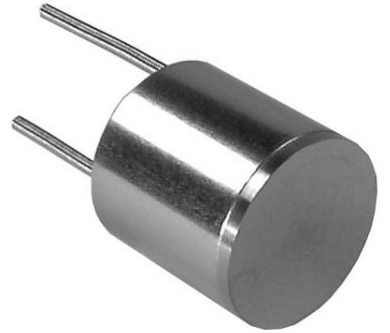


TB-198

# Standard Series Barium Tungsten Dispenser Cathodes

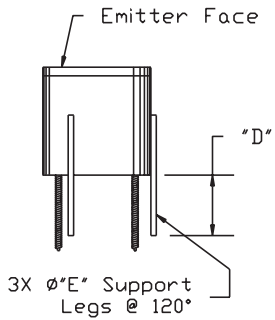
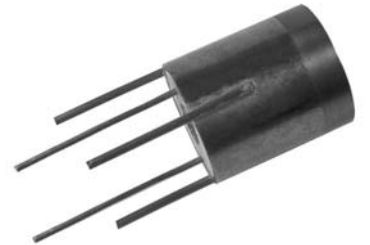
## Standard Series Dispenser Cathodes

- 950-1200°C operation
- Type 311 (532, 411, 612, M, Scandate by request)
- 3-5A/cm<sup>2</sup> CW emission
- >15A/cm<sup>2</sup> Pulsed emission
- Al<sub>2</sub>O<sub>3</sub> Insulation, molybdenum body
- >>10,000 hours under ideal conditions
- Both power leads electrically isolated from the outer body
- Non Gassy
- Available from stock
- See below for the same units with support legs
- Os/Ru (M Type), Os/W, Ir emission enhancing coatings available



## Standard Series Cathodes With Support Legs

- Same as the standard series cathodes but with added "tripod" support legs.
- Excellent stability and thermal isolation
- Beam current can go thru legs



Part # w/out Legs	Part # w/Legs	Prev. Ref.	"A"	"B"	"C"	"D"	"E"
101100	101101	STD 134	.134	.285	.35	.50	.015 Re
101102	101103	STD 200	.200	.300	.35	.50	.015 Re
101104	101105	STD 250	.250	.350	.35	.50	.015 Re
101106	101107	STD 300	.300	.400	.35	.50	.015 Re
101108	101109	STD 400	.400	.450	.35	.50	.015 Re
101110	101111	STD 500	.500	.500	.35	.50	.025 Re
101112	101113	STD 600	.600	.600	.50	.50	.025 Re
101114	101115	STD 750	.750	.750	.75	.50	.040 Re
101116	101117	STD 1000	1.000	1.000	1.00	1.50	.040 Re

Part # w/out Legs	Part # w/Legs	Prev. Ref.	900 deg. C			1000 deg. C			1100 deg. C			1200 deg. C			
			Volts	Amps	Watts	Volts	Amps	Watts	Volts	Amps	Watts	Volts	Amps	Watts	Ohms
101100	101101	STD 134	2.90	0.90	2.60	3.70	1.00	3.70	4.70	1.10	5.20	5.80	1.30	7.50	4.40
101102	101103	STD 200	3.50	0.86	3.00	4.80	1.25	6.00	6.20	1.37	8.50	7.50	1.53	11.50	4.90
101104	101105	STD 250	3.30	1.36	4.50	4.80	1.67	8.00	6.30	1.83	11.50	7.60	1.97	15.00	3.90
101106	101107	STD 300	4.80	1.46	7.00	6.50	1.69	11.00	8.20	1.89	15.50	9.80	2.04	20.00	4.80
101108	101109	STD 400	4.00	2.75	11.00	5.60	3.39	19.00	7.20	3.75	27.00	8.60	4.07	35.00	2.10
101110	101111	STD 500	5.00	4.00	20.00	7.00	4.57	32.00	8.40	5.24	44.00	10.20	5.39	55.00	1.90
101112	101113	STD 600	3.90	7.70	30.00	4.70	9.57	45.00	5.80	11.20	65.00	7.00	12.86	90.00	0.50
101114	101115	STD 750	5.00	8.00	40.00	6.70	9.55	64.00	8.80	11.10	98.00	10.50	12.57	132.00	0.80
101116	101117	STD 1000	6.40	10.50	67.00	8.70	12.30	107.00	11.00	14.00	154.00	13.50	14.80	200.00	0.90

Note: V, I, T data is taken with bare cathode in 1x10<sup>-6</sup> Torr. AC operation is preferred, DC is acceptable. Consult factory for details.