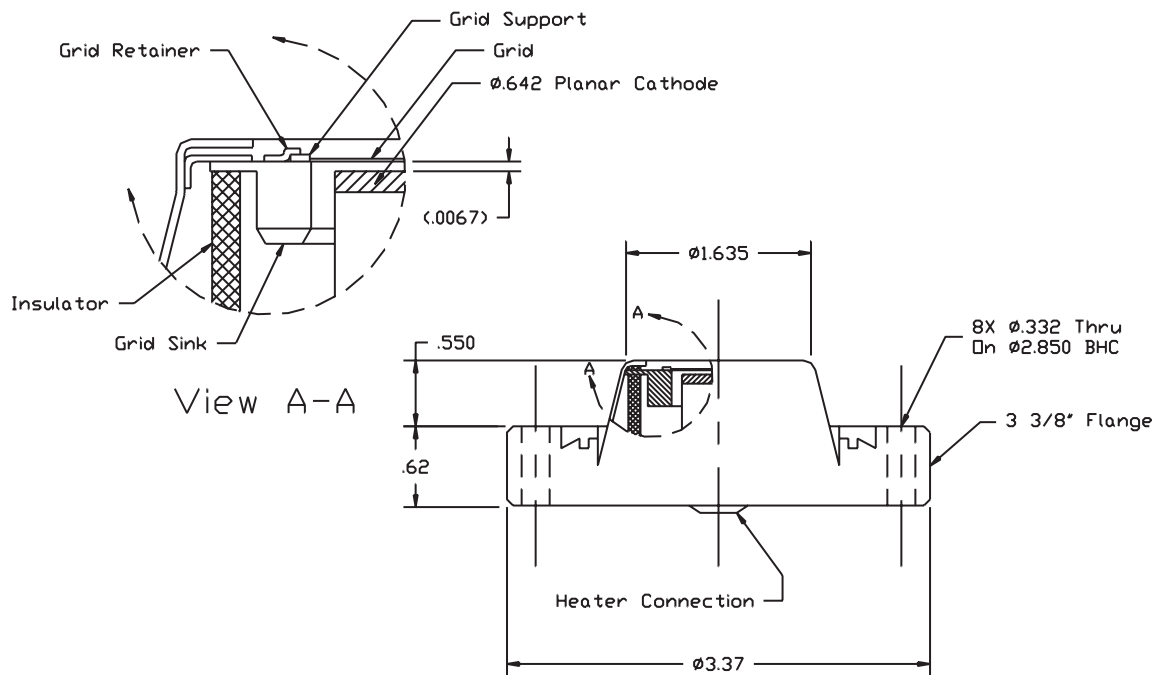


## HWEG 101255 Electron Gun Specifications

Conflat Size	3-3/8"
Grid - Cathode Spacing	160 Microns
Emission, typical*	12A @ Ec=100V, .002 Duty
Grid Power Maximum	1.5 Watts
Grid Volts* Typical/Maximum	100/-150
Grid Amps* Maximum	50 mADC
Grid Screening Fraction	33%
Transconductance*	100-180 mmhos
Cathode Area	2.0 cm <sup>2</sup> (Ø.642)
Cathode Heater Voltage	6.0/7.5
Cathode Heater Current, Typical	5.2A @ 6.0V
Cathode Type	Dispenser
Cathode Life**	10,000 Hours @ 8 Amps 100,000 Hours @ 1 Amp

\* Actual values are subject to Anode and system configurations.

\*\*Cathode lifetimes are theoretical and under ideal conditions.



HWEG 101255 Dimensions and Grid Configuration