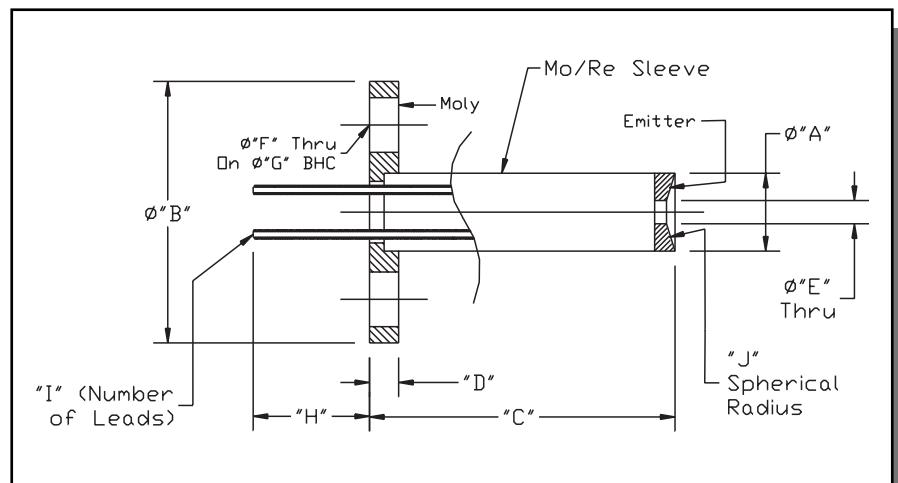


TB-176

Custom Dispenser Cathodes With Mounting Flanges



Several examples of dispenser cathodes with support sleeves and mounting flanges are shown. Each has other features, coatings and/or configurations that may be unique. Detailed specifications including emitter type, coating type, Vf, If, Tk data, etc. are available by request. Many shown below are available from stock.



Part #	Ø "A"	Ø "B"	C Dim.	D Dim.	Ø "E"	Ø "F"	Ø "G"	H Dim.	I	J Dim.
101300	0.015	0.45	0.525	0.050	-	4X .094	0.300	0.2	1	-
101750	0.063	0.45	0.525	0.050	-	4X .094	0.300	0.2	1	-
101157	0.134	0.45	0.525	0.050	-	4X .094	0.300	0.2	1	-
101256	0.134	0.91	2.536	0.096	-	6X .125	0.625	0.5	1	-
101398-01	0.134	0.45	0.525	0.050	-	4X .094	0.300	0.2	1	0.196
101398-02	0.134	0.45	0.525	0.050	-	4X .094	0.300	0.2	1	0.394
101441	0.200	0.60	0.810	0.060	-	4X .094	0.400	0.5	1	-
101447	0.200	0.83	1.024	0.060	-	4X .100	0.630	0.5	1	-
101334	0.250	0.50	0.750	0.060	0.08	-	-	0.5	1	0.375
101257	0.250	0.91	2.536	0.096	-	6X .125	0.625	0.5	1	-
101373-01	0.250	1.00	1.595	0.195	-	special	special	1.0	1	-
101373-02	0.250	1.00	1.595	0.195	0.08	special	special	1.0	1	-
101439	0.250	0.71	0.790	0.060	-	special	0.550	1.6	1	-
101532-01	0.250	1.00	1.525	0.125	-	3X .120	0.750	1.0	1	-
101532-02	0.250	1.00	1.525	0.125	0.06	3X .120	0.750	1.0	1	-
101474	0.313	1.20	0.793	0.104	-	6X .120	0.990	1.1	2	1.500
101507	0.400	1.02	1.260	0.060	-	4X .125	0.790	1.2	1	-0.263
101322	0.438	0.81	1.150	0.080	-	-	-	0.2	1	0.353
101413	0.500	0.95	1.120	0.120	-	6X .125	0.700	1.0	1	-
101318-01	0.600	1.75	1.245	0.125	-	8X .120	1.522	0.5	1	-
101318-02	0.600	1.75	1.245	0.125	-	8X .120	1.522	3.9	1	-