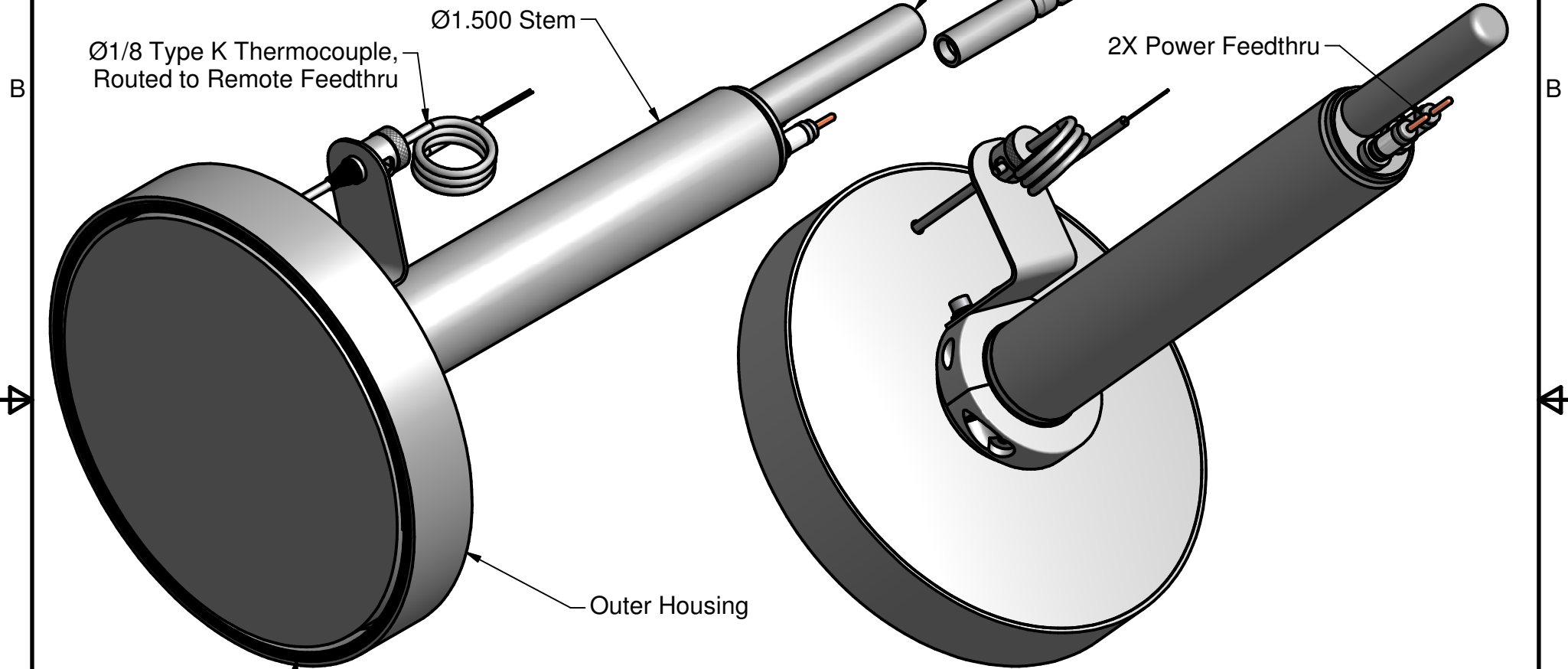




PARTS LIST

ITEM	QTY	PART NUMBER	DESCRIPTION
1	1	107051	Ø6.0 O2 Heater Assembly, BOM



A

A

Heat Shied Pack

Outer Housing

Ø1/8 Type K Thermocouple,  
Routed to Remote Feedthru

Ø1.500 Stem

SST Pinch Off Tube Protector

2X Power Boot

2X Power Feedthru

DRAWN mcurtis	8/11/2011
CHECKED	
QA	
MFG	
APPROVED	
Material:	

*HeatWave Labs, Inc.* 195 Aviation Way, Suite 100 P: 831-722-9081  
 Watsonville, CA 95076 F: 831-722-5491  
 www.cathode.com

**Ø6.0 O2 Heater Assembly  
 w/Ø1.50 Stem, Sealed**

This document is the property of HeatWave Labs.  
 Its contents may not be reproduced without  
 express written permission of HeatWave Labs.

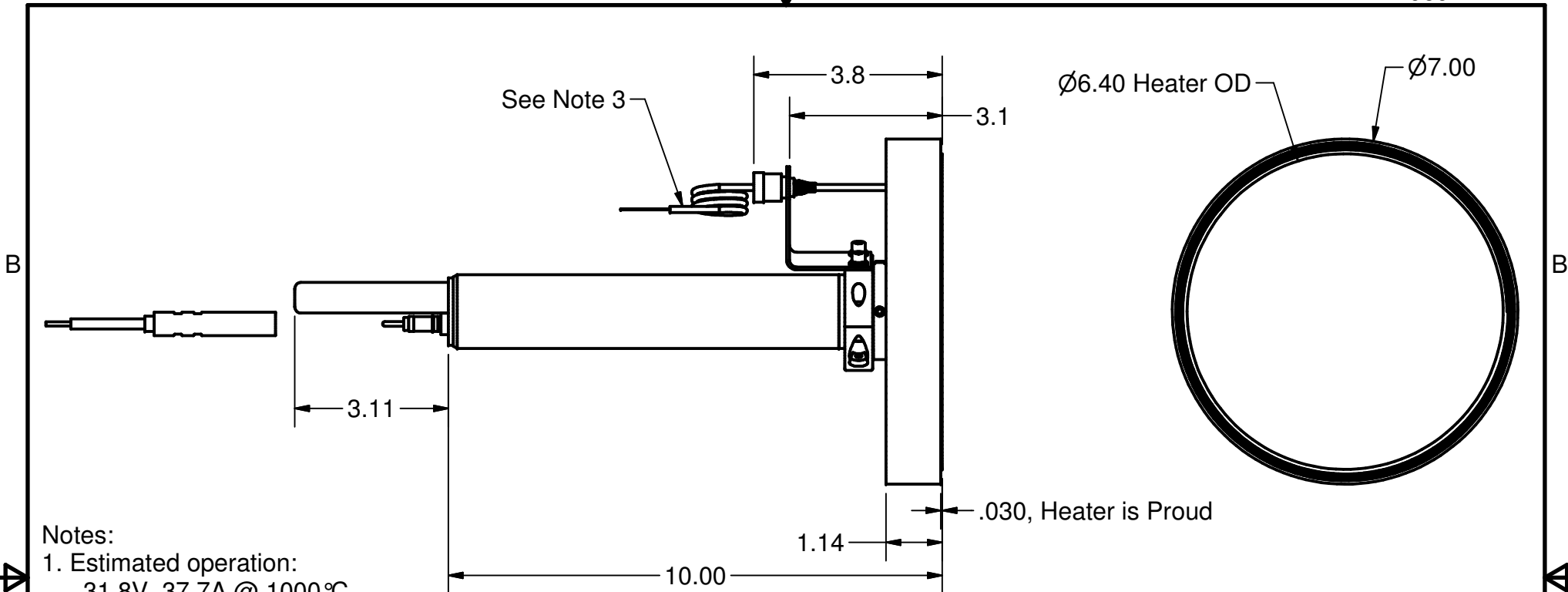
SIZE A	Cage Code: 1YAN4	DWG NO 106911	REV
SCALE 1/2	SHEET 1 OF 2		



2

1

106911



Notes:

1. Estimated operation:  
31.8V, 37.7A @ 1000°C  
The sited temperature is the heater face temperature under optimum conditions.
2. All materials exposed to the chamber atmosphere shall be Hastelloy C-22 with the exception of the following:  
Thermocouple sheaths  
Inconel TC Springs  
SST TC Bracket  
SST TC Bayonet Mount Hardware
3. TC shown does not demonstrate actual TC length. The TC shall be a total length of 24" sheathed length with 6" long flying leads. The sheath is terminated with epoxy to be passed through a feedthru so only the sheath is exposed to the chamber atmosphere.
4. This heater has a sealed filament. It is housed in a vacuum and is not at either chamber or room atmosphere.

This document is the property of HeatWave Labs. Its contents may not be reproduced without express written permission of HeatWave Labs.

DRAWN mcurtis	8/11/2011
CHECKED	
QA	
MFG	
APPROVED	

<i>HeatWave Labs, Inc.</i>		195 Aviation Way, Suite 100 P: 831-722-9081 Watsonville, CA 95076 F: 831-722-5491 www.cathode.com	
		<b>Ø6.0 O2 Heater Assembly w/Ø1.50 Stem, Sealed</b>	
SIZE A	DWG NO 106911	REV	
SCALE 1/3	SHEET 2 OF 2		

2

1