

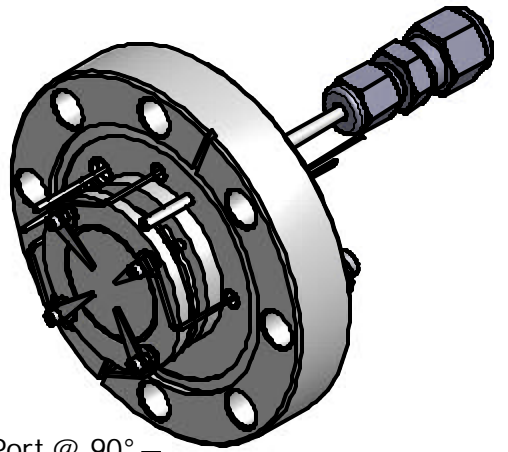
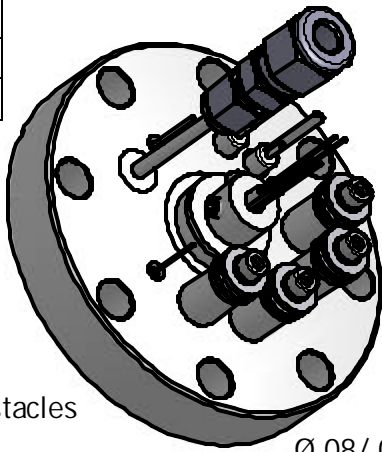
2

1

105032

PARTS LIST

ITEM	QTY	PART NUMBER	DESCRIPTION
1	1	105130	BOM



4X Spring Clip Feedthru
 Orientation Very Important, Must Not Be Blocked By Obstacles

1 Pair Type K TC Feedthru, For Customer Use

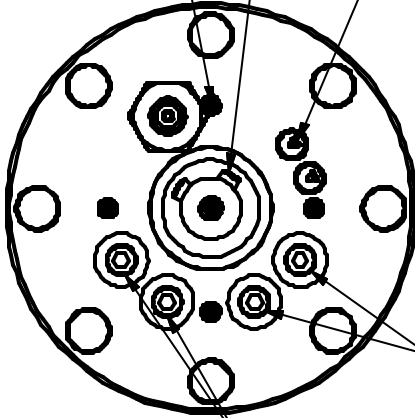
Ø.08/.09 (Ø.06 ID) Gas Port @ 90°
 3 3/8 CFF, Non-Rotatable, Not Tapped

B

B

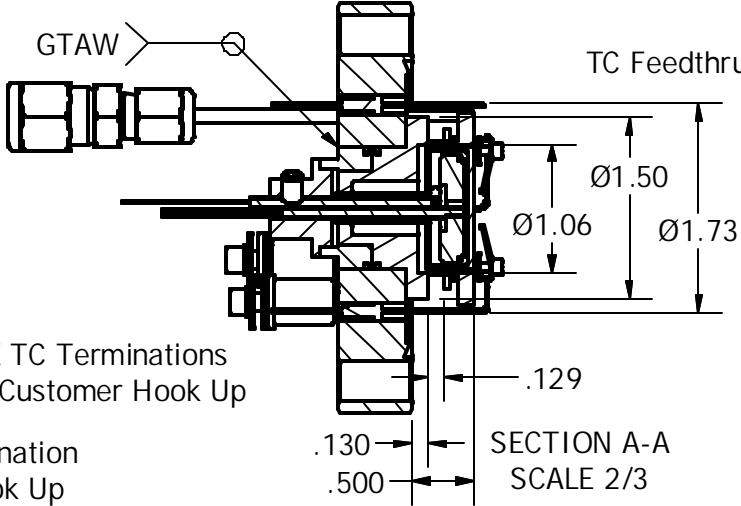
A

A



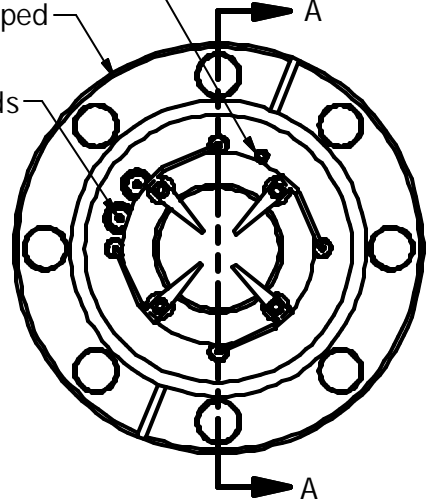
2X TC Terminations & Customer Hook Up

2X Power Termination & Customer Hook Up



TC Feedthru Leads

SECTION A-A
 SCALE 2/3



- Notes:
1. CFF to be leak tight to 1×10^{-9} cc/sec Helium.
 2. Assembly must fit into a Ø1.8 ID tube mounted to the mating flange without touching the walls.
 3. After heater housing is welded into flange assembly one each Ni feedthru is spot welded to each spring clip.

This document is the property of HeatWave Labs. Its contents may not be reproduced without express written permission of HeatWave Labs.

DRAWN	Marc Curtis	12/16/2008
CHECKED		
QA		
MFG		
APPROVED		
Material:		

HeatWave Labs, Inc. 195 Aviation Way, Suite 100 P: 831-722-9081
 Watsonville, CA 95076 F: 831-722-5491
 www.cathode.com

3 3/8 CFF Mounted 101491 Style Heater Assembly w/Isolated Sample Clips

SIZE	Cage Code:	DWG NO	REV
A	1YAN4	105032	

SCALE 2/3 SHEET 1 OF 1

2

1

1