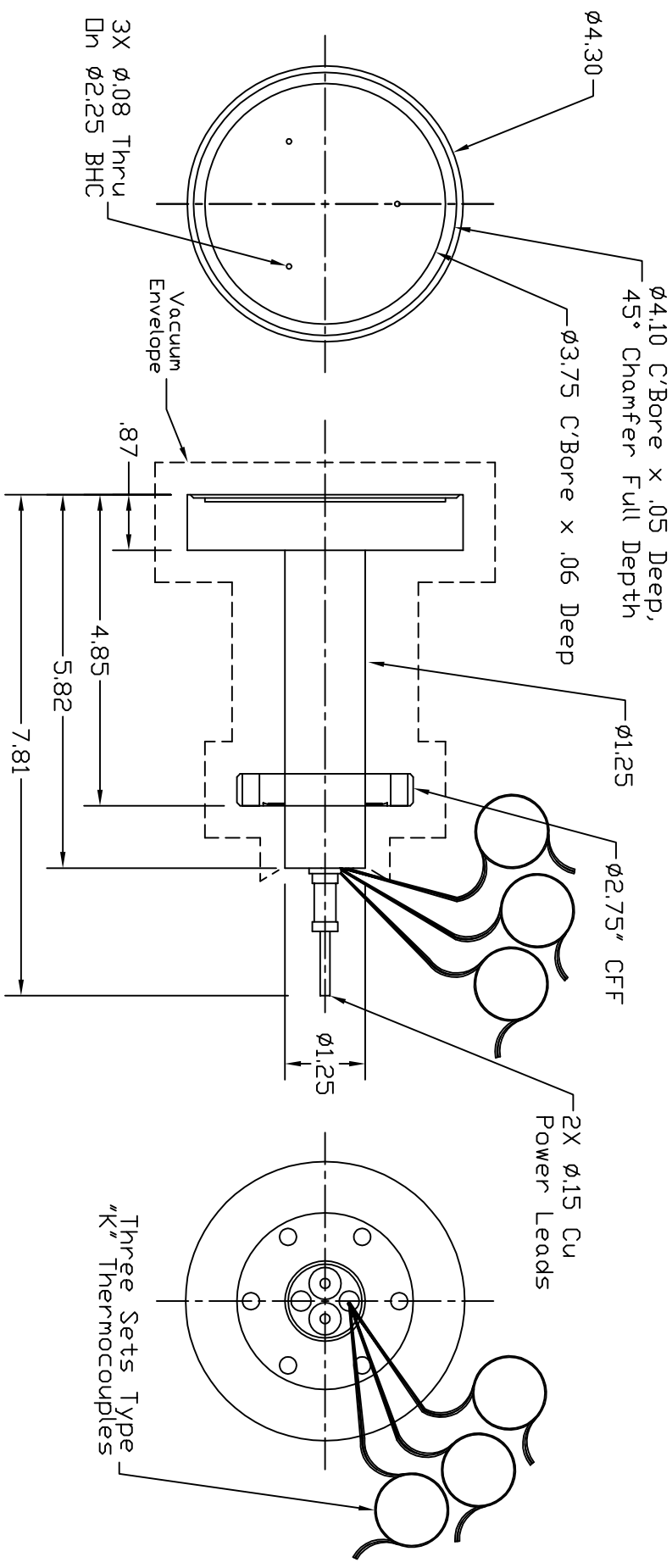


Dash #	Next Assembly
-	-

REVISIONS			
REV	DESCRIPTION	DATE	APPROVED
1	Changed V,I,T data to reflect 1st run real data.	2/27/12	MC



- Notes:
- Estimated operation:  
5.8V, 38.5A @ 800°C  
9.5V, 53.8A @ 1000°C

This document is the property of HeatWave Labs. Its contents may not be reproduced or distributed without express written permission of HeatWave Labs.

UNLESS OTHERWISE SPECIFIED  
ALL DIMENSIONS ARE IN INCHES.  
TOLERANCES ARE:  
XXXX =  $\pm .005$  XX =  $\pm .020$   
FINISH 63 MICRONDICHES  
ANGLES 0 DEGREE  $\pm 30$  MINUTES  
EDGES AND CORNERS .005 R MAX

MATERIAL  
-

DD NOT SCALE DRAWING

Qty.	Part #	Description	Item #
1	104713	$\phi 4.0$ " Wafer Heater	-

**HeatWave Labs, Inc.**  
195 Aviation Way, Suite 100 (831) 722-9081  
Watsonville, Ca. 95076 Fax: (831) 722-5491  
Website: www.cathode.com

BY DATE

DRAWN	
ENGR	M.Curtis 5/15/08

$\phi 4.0$ " Wafer Heater

SIZE	Cage Code	DWG. NO.	REV
A	1VAN4	104711	1

THIRD ANGLE PROJECTION SCALE: 0.4X SHEET: 1/1