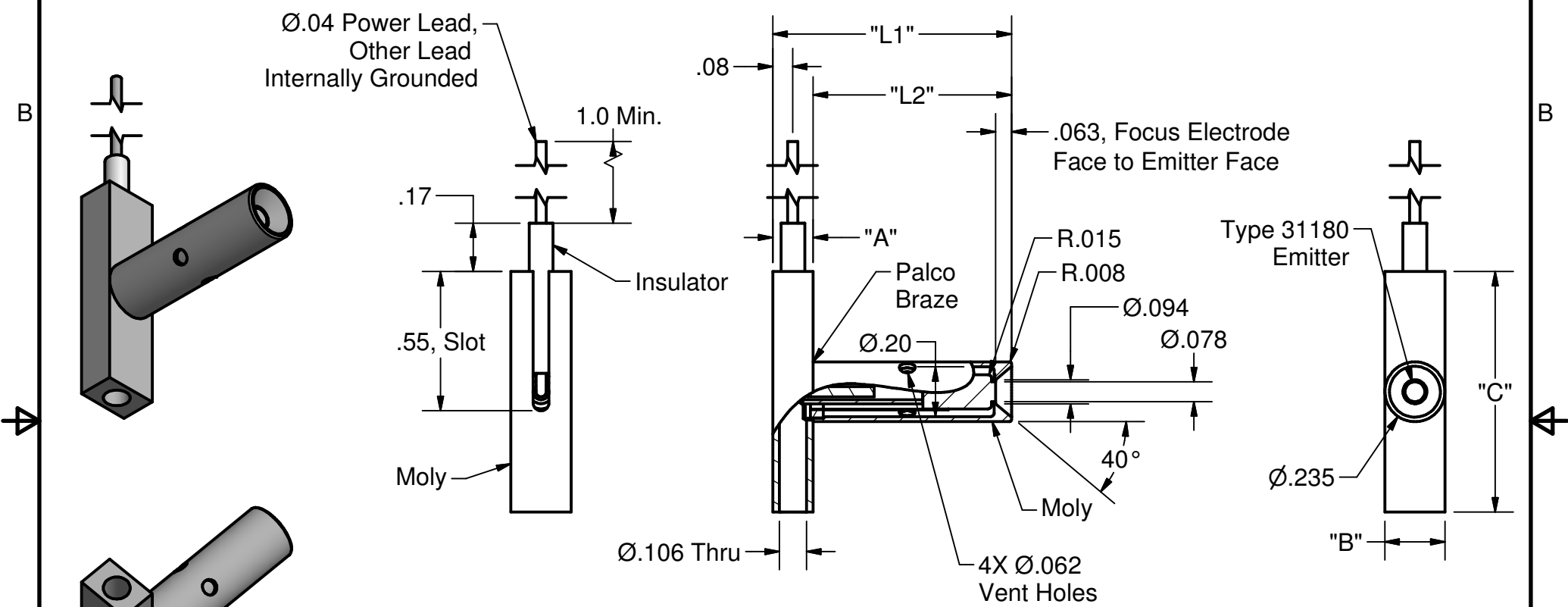


PARTS LIST

REVISION HISTORY

ITEM	QTY	PART NUMBER	DESCRIPTION
1	1	See Table A	Ø2mm Cathode & Mount, BOM

REV	DESCRIPTION	DATE	APPROV
A	Redrawn in Inventor, added dash numbers.	5/6/13	MC



104640-01 Shown This Page

This document is the property of HeatWave Labs. Its contents may not be reproduced without express written permission of HeatWave Labs.

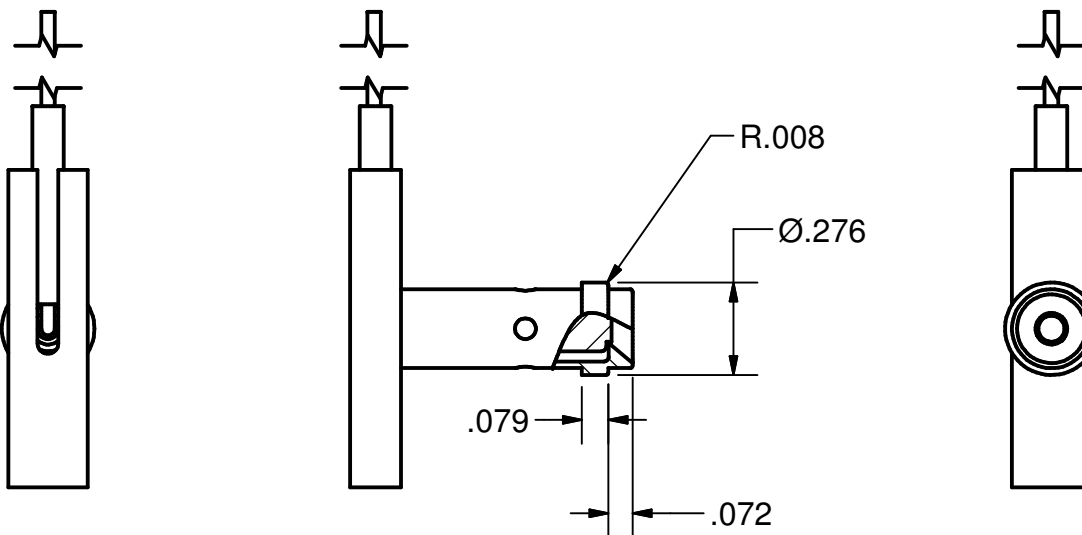
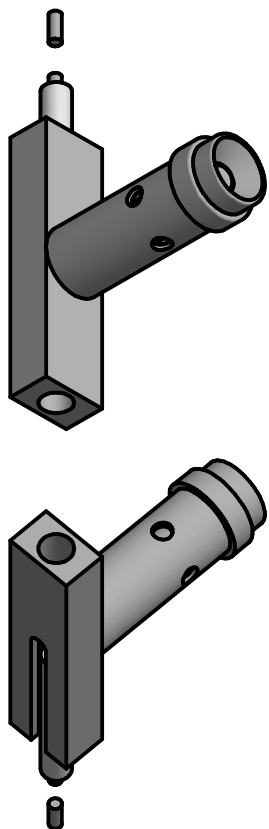
DRAWN	mcurtis	5/6/2013
CHECKED		
QA		
MFG		
APPROVED		
Material:		

HeatWave Labs, Inc.
 195 Aviation Way, Suite 100 P: 831-722-9081
 Watsonville, CA 95076 F: 831-722-5491
 www.cathode.com

Ø2mm Cathode & Mount

SIZE	Cage Code:	DWG NO	REV
A	1YAN4	104640	A

SCALE 1.75x SHEET 1 OF 2



104640-02 Shown This Page
See Note 3

TABLE A						
Dash #	"A"	"B"	"C"	"L1"	"L2"	Referance
-01	.157±.005	.236±.005	.945±.005	.936±.005	.779±.005	104660-01
-02	.151±.002	.235±.005	.945±.005	(.840)	.689±.005	104660-02

Notes:

- Focus electrode ID, face and R.008 to have an 8 microinch or better finish.
- Typical operation:
 - 3.7V, 1.13A @ 950 °C
 - 4.7V, 1.28A @ 1050 °C
 - 5.8V, 1.42A @ 1150 °C
- For all other dimensions refer to Table A and page 1.

This document is the property of HeatWave Labs. Its contents may not be reproduced without express written permission of HeatWave Labs.

DRAWN mcurtis	5/6/2013	<i>HeatWave Labs, Inc.</i> 195 Aviation Way, Suite 100 P: 831-722-9081 Watsonville, CA 95076 F: 831-722-5491 www.cathode.com			
CHECKED					
QA		Ø2mm Cathode & Mount			
MFG					
APPROVED					
Material:		SIZE A	Cage Code: 1YAN4	DWG NO 104640	REV A
		SCALE 1.75x			SHEET 2 OF 2

