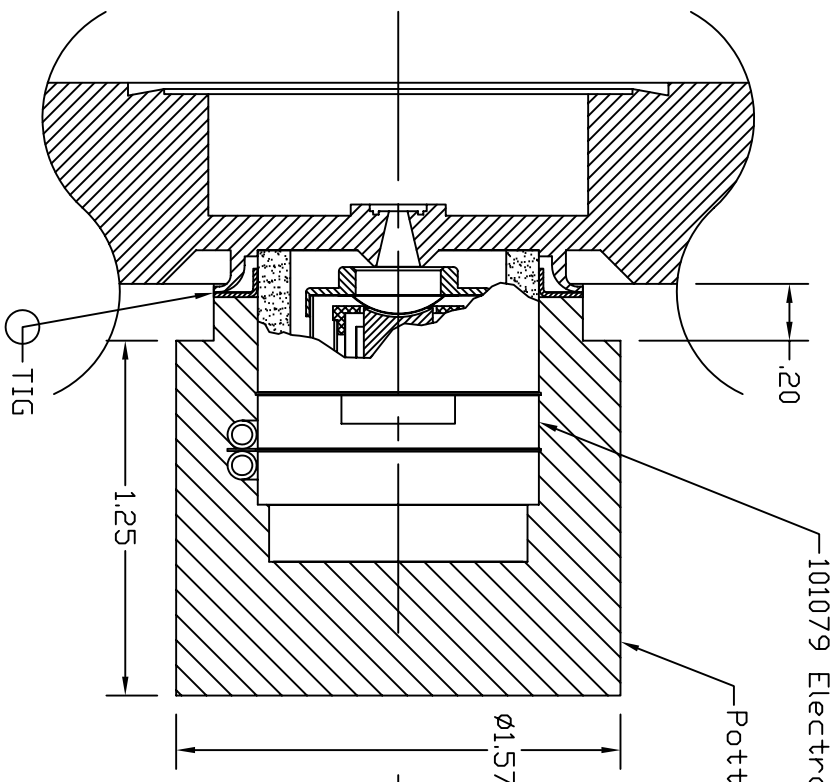


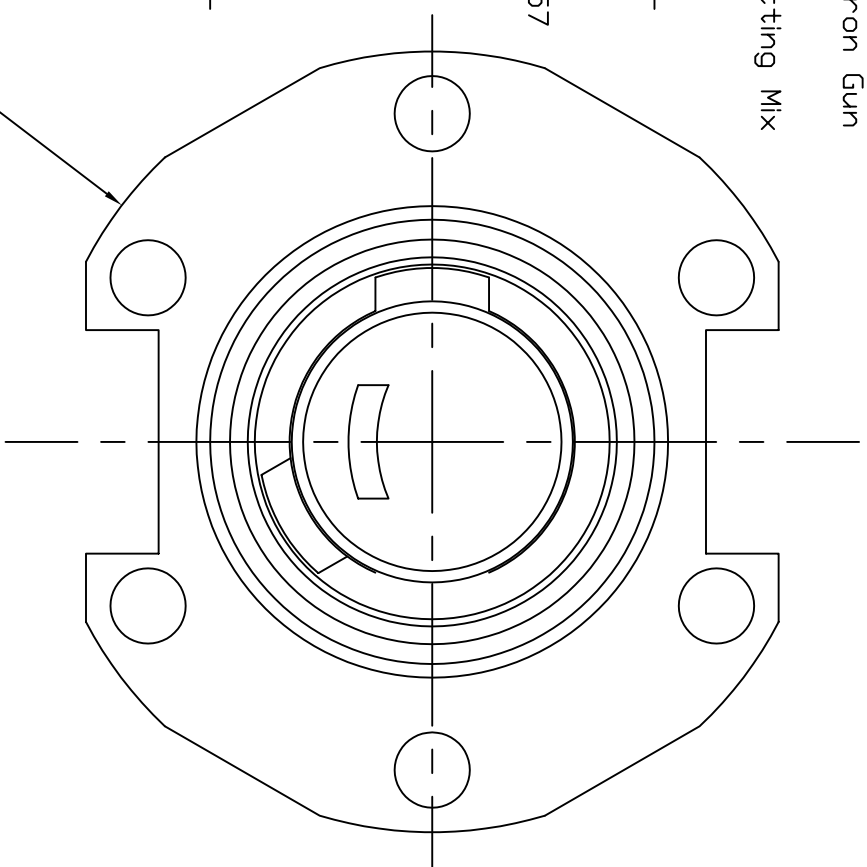
Dash # Next Assembly

- -

REVISIONS			
REV	DESCRIPTION	DATE	APPROVED



Customer Supplied Flange



- Notes:
1. Concentricity and Z location to flange is self fixturing.
 2. All welds to be leak tight to 1 x 10⁻⁹ cc/sec Helium.
 3. Wires to be soldered to each connector (3X) and extend outside potting mix x 18" minimum.

This document is the property of HeatWave Labs. Its contents may not be reproduced or distributed without express written permission of HeatWave Labs.

UNLESS OTHERWISE SPECIFIED ALL DIMENSIONS ARE IN INCHES.
TOLERANCES ARE: XXX = ±.005 XX = ±.020 XXXX = ±.0005
FINISH 63 MICRONS ANGLES 0 DEGREE ±30 MINUTES EDGES AND CORNERS .005 R MAX
MATERIAL
-
DD NOT SCALE DRAWING

Qty.	Part #	Description	Item #
1	104400	Flange Mounted Electron Gun	1

BY		DATE	
ENGR	M.Curtis	11/5/07	

HeatWave Labs, Inc.		195 Aviation Way, Suite 100 (831) 722-9081	
Watsonville, Ca. 95076		Fax: (831) 722-5491	
Website: www.cathode.com			

Flange Mounted Electron Gun	SIZE	FSCN NO.	DWG. NO.	REV
	A		104386	-

THIRD ANGLE PROJECTION	SCALE: 1:5x	SHEET: 1/1
------------------------	-------------	------------