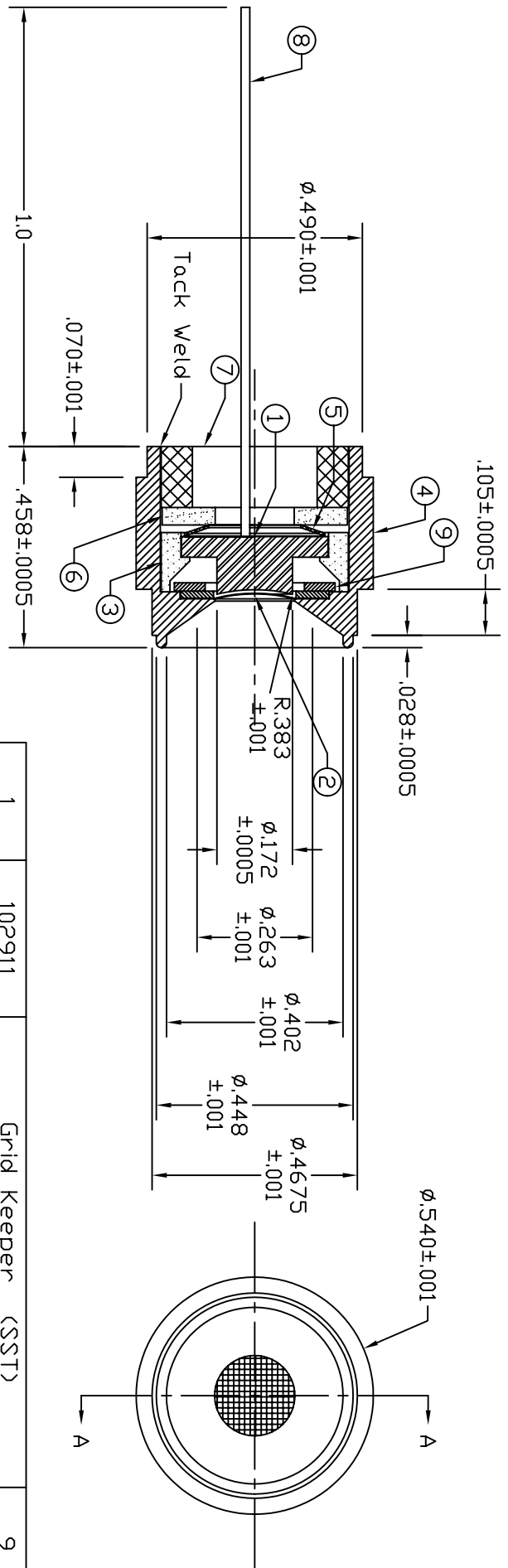


Dash # Next Assembly  
- -

REV	DESCRIPTION	DATE	APPROVED



View A-A

- Notes:
1. Grid is Moly, .0015 thick x .0015 line width x 100 lines per inch (<.0085 opening>) = 72% transparency.
  2. Grid to cathode spacing to be .0080±.0015.

This document is the property of HeatWave Labs. Its contents may not be reproduced or distributed without express written permission of HeatWave Labs.

UNLESS OTHERWISE SPECIFIED  
ALL DIMENSIONS ARE IN INCHES.  
TOLERANCES ARE:  
XXXX = ±.005 XX = ±.020  
XXXXX = ±.0005  
FINISH 63 MICROINCHES  
ANGLES 0 DEGREE ±30 MINUTES  
EDGES AND CORNERS .065 R MAX

MATERIAL  
-

DD NOT SCALE DRAWING

Qty.	Part #	Description	Item #
1	102911	Grid Keeper (SST)	9
1	-	Ø.020 Nickel Lead	8
1	102910	Keeper Ring (Kovar)	7
1	102909	Ceramic Washer (Alumina)	6
1	102908	Spring Washer (SST)	5
1	102907	Focus Electrode (Kovar)	4
1	102906	Ceramic Spacer (Alumina)	3
1	102905	Grid Assembly (Moly - Note 1)	2
1	102904	Cathode (Cathode Nickel)	1

**HeatWave Labs, Inc.**  
195 Aviation Way, Suite 100 (831) 722-9081  
Watsonville, Ca. 95076 Fax: (831) 722-5491  
Website: www.cathode.com

BY DATE  
ENGR M.Curtis 10/29/04

Gridded Cathode Assembly

SIZE Code Code DWG. NO. REV  
A 1VAN4 102818 -  
THIRD ANGLE PROJECTION SCALE: 28x SHEET: 1/1